



MACHINE KNIVES & BLADES

Pulp and Paper Industry Page No. (04-28)

Bottom Slitter Blades	04-05
Top Slitter Blades	06-07
Guillotine Knives	08-09
Trimmer Knives	10-11
Sheeter Knives	12-13
Splitter Knives/Roll Splitter Knives	14
Paper Cutting Knives	15
Chipper Knives	16
Counter Knife	17
Corrugated Knives	18
Slitting Knives for Corrugated Paperboard Industry	19-20
Knives for Disposable Paper Industry	21-22
Circular Slitting Blades for Paper Tube	23-24
Knives for Disposable Paper Industry	25-26
Slitting Knives for Corrugated Paperboard Industry	27-28

Printing Graphic Industry Page No. (29-33)

Binding & Stitching Knives	30
Profile and Perforating Knives	31
Blades for Packing and Printing Industry	32-33

Pipe Tube Forming Page No. (34-40)

Rubber Spacer Knives	35
Slitter Cutters	36
Metal Spacers	37
Separator Discs	38
Forming Rolls	39
Tube Cut Off/ Alfa Shears	40

Metal Engineering Fabricating Page No. (41-44)

Guillotine Shearing Knives	42
Hot Crop Shears / Billet	43
Crop & Billet Shears	44

Cold Rolling Steel Processing Page No. (45-47)

CRM Rolls	46
HR & CR Slitting Cutters	47

Wood Industry Page No. (48-52)

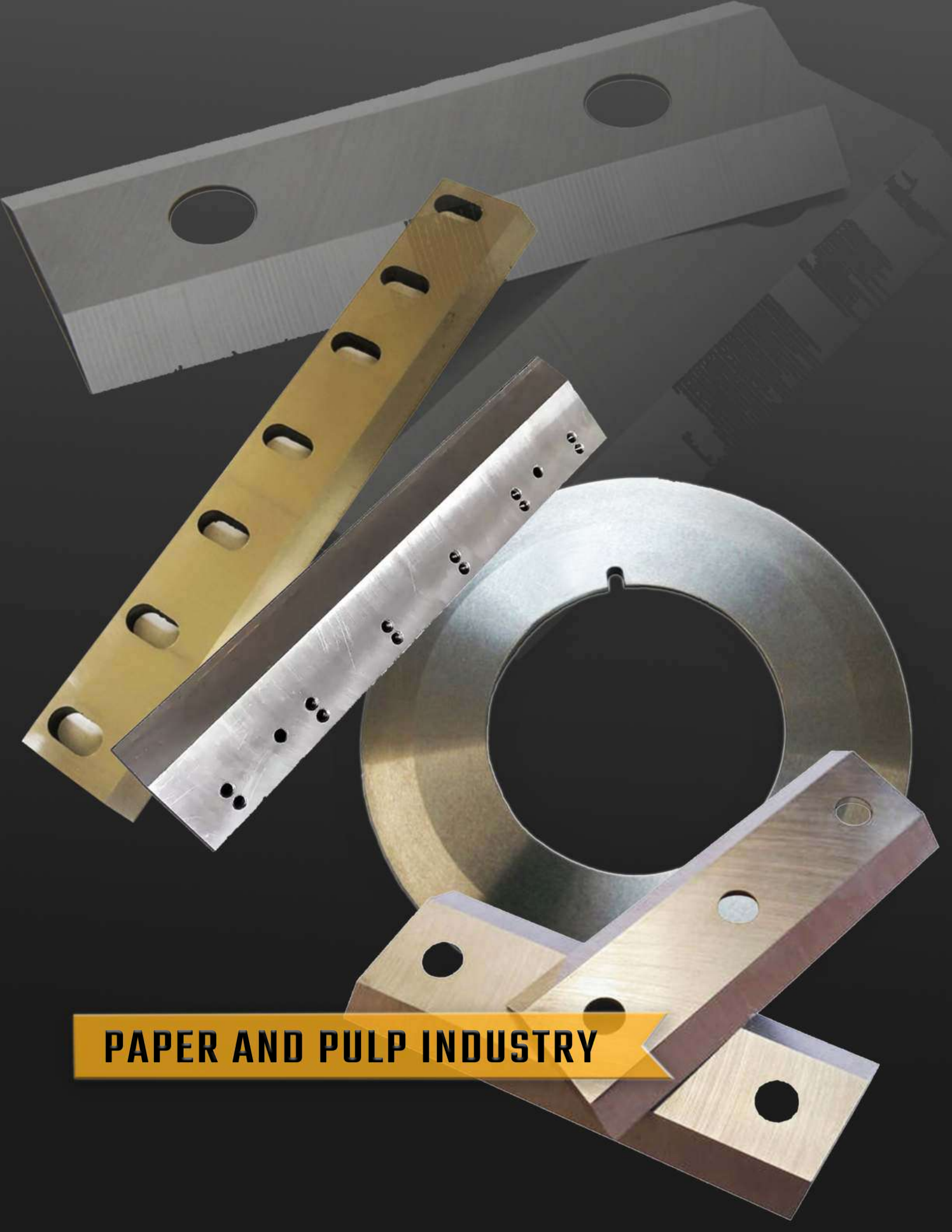
Wood Industry Chipper Knives	49
Veneer Rotary Knives	50
Wood Planner Knives	51
Canter/Slabber Knives	52

Plastic Rubber Recycling Industry Page No. (53-55)

Granulating knives/Granulator	54
Shredder Blades/Knives	55

Other Knives & Blades Page No. (56-63)

Blades for Lithium Industry	56-57
Knives for Metal Slitting	58-59
Thin Blades for Chemical Fiber Industry	60-61
Circular Knives for Other Industries	62-63



PAPER AND PULP INDUSTRY

Bottom Slitter Blades



Material introduction

For bottom slitter blades, we generally use 9CrSi, Skd11 (D2), HSS and other materials with high strength and good wear resistance.

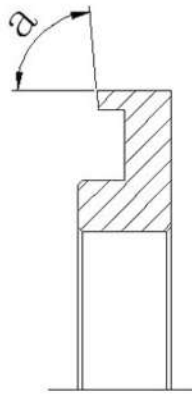
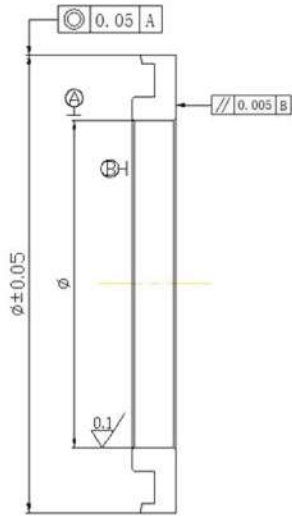
Parameters

Hardness of Rockwell	57-64
Parallelism	0.005mm
Surface finish	Ra 0.1
Concentricity	0.005mm

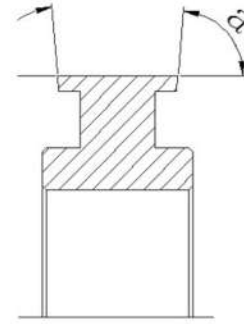
Features

- Mature production flow, stable product quality, standard sizes in stock.
- With stringent testing standards, the products are put into warehouse according to the drawings.

Continue



Single edge



Double edge

Specifications	Φ Outer diameter	$\Phi 1$ Inner diameter	B Width	b Blade width	$\Phi 3$ Large-Medium diameter	$\Phi 2$ Small-Medium diameter	C Key width	H Key depth
$\Phi 70 \times \Phi 45 \times 10 \times 8$	70	45	10	8	67	59	10	49
$\Phi 70 \times \Phi 45 \times 4 \times 2.5$	70	45	4	2.5	67	59	10	49
$\Phi 80 \times \Phi 50 \times 5 \times 3.5$	80	50	5	3.5	77	65	10	53.8
$\Phi 80 \times \Phi 50 \times 10 \times 8$	80	50	10	8	77	65	10	53.8
$\Phi 80 \times \Phi 60 \times 10 \times 8$	80	60	10	8	77	69	-	-
$\Phi 70 \times \Phi 45 \times 6 \times 4$	70	45	6	4	67	59	-	-
$\Phi 108 \times \Phi 80 \times 10 \times 8$	108	80	10	8	105	90	-	-
$\Phi 108 \times \Phi 80 \times 20 \times 18$	108	80	20	18	104	90	-	-

Top Slitter Blades



Material

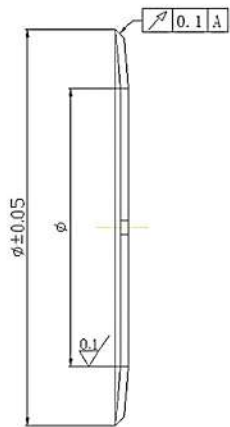
The top slitter blades are generally made from 9CrSi, Skd11(D2), HSS, and the heat treatment hardness is HRC 57-64.

The knife holder is generally made from 65Mn, spring steel (GCr15), and the heat treatment hardness is HRC 50-59.

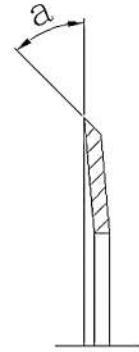
Parameters

Hardness of Rockwell	57-64
Tolerance of inner hole	+0.01-0.04mm
Overall smoothness	Ra 0.1

Continue...



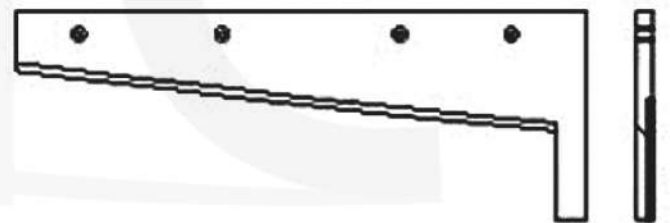
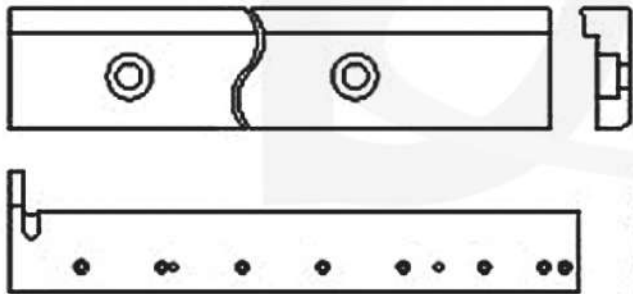
Double (Thin) bevel



Single bevel

Specifications	Φ Outer diameter	$\Phi 1$ Inner diameter	B Width	b Thickness	C Key width	H Key depth	α Blade angle
$\Phi 62 \times \Phi 42 \times 1.5$	62	42	2.5	1.5	2.2	44.5	45°
$\Phi 64 \times \Phi 40 \times 1$	64	40	1.8	1	3	44	45°
$\Phi 75 \times \Phi 45 \times 1$	75	45	2	1	3	49	45°
$\Phi 75 \times \Phi 45 \times 1.5$	75	45	2.5	1.5	3	49	45°
$\Phi 62 \times \Phi 42 \times 1$	62	42	2	1	2.2	45	45°
$\Phi 100 \times \Phi 75 \times 1$	100	75	2.3	1	2.2	77.6	45°
$\Phi 105 \times \Phi 70 \times 1$	105	70	2	1	3.2	75	45°
$\Phi 105 \times \Phi 70 \times 1.5$	105	70	2.5	1.5	3.2	75	45°
$\Phi 140 \times \Phi 95 \times 1$	140	95	2	1	3.2	100	45°

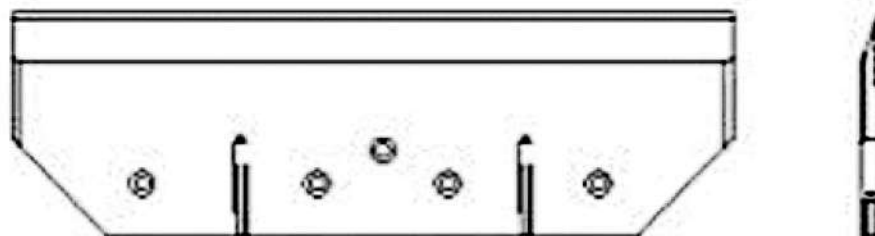
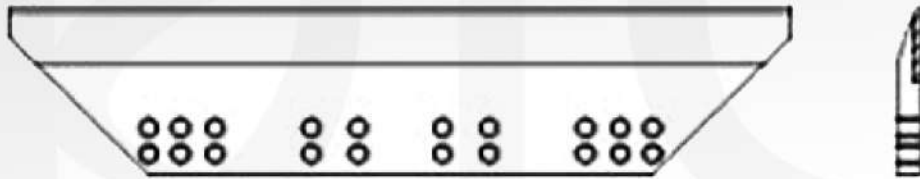
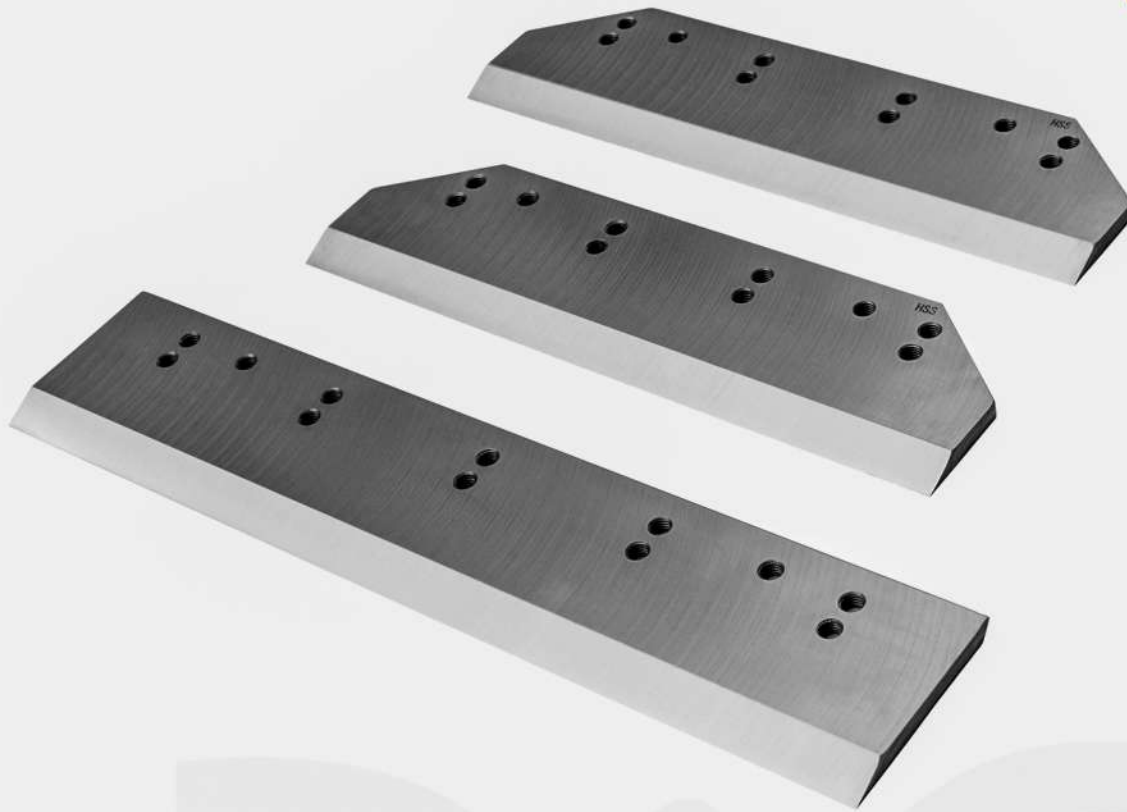
Guillotine Knives



Continue...

Length	Width	Thickness
520	145/80/65	10
355	65/55	10
520	40	15/10
360	40	15/10
320	65	8
550	95/65	8
550	40	15
380	32	15/13.7
520	140/75/65	6
355/337	65/55	6
520	40	15/10
360	40	15/10

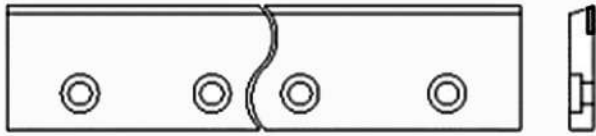
Trimmer Knives



Continue...

Length	Width	Thickness
500	115	10
390	115	10
560	115	10
424	115	10
540	90	12
392	90	12
540	90	12
409	90	12
560	115	10
405	115	10
460	130	11
400	130	11

Sheeter Knives

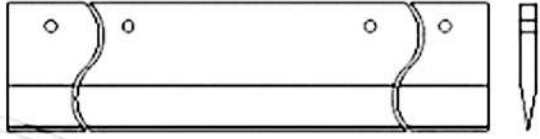


Length	Width	Thickness	Angle
1400	75	13	72°
1400	75	15	72°
1450	50	10	73°
1450	50	10	73°
2200	35	10	76°
2200	55	10	72°
2600	53	10	75°
2600	53	10	75°
2600	75	13	71.5°
2600	75	13	71.5°
3200	75	13	68°
3200	75	15	71.5°

Continue...

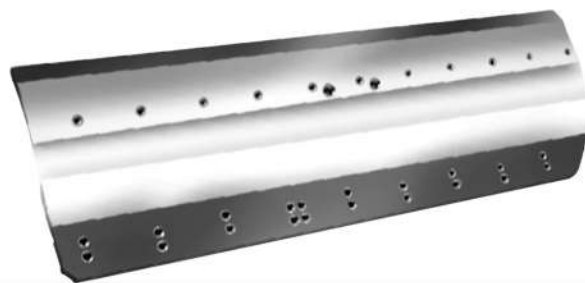
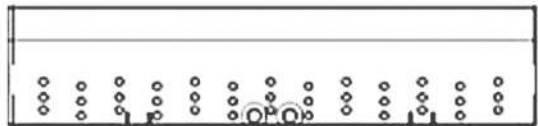
Length	Width	Thickness	Angle
1650	62	18	60°
1650	62	18	60°
1680	69	18	60°
1680	69	18	60°
1870	63	18	60°
1870	63	18	60°
2100	64	18	60°
2100	64	18	60°
2300	65	7	60°
2300	65	7	60°
2570	66	18	60°
2570	66	18	60°

Splitter Knives/Roll Splitter Knives



Length	Width	Thickness	Angle
1880	127	16	40°
2565.4	127	15.875	30°
2700	150	13	30°
2830	150	20	33.4°
2960	170	21	30.5°
2970	170	21	30.5°
2970	145	25	30.5°

Paper Cutting Knives



Length	Width	Thickness
925	110	9.7
990	107	11.7
1095	115	11.7
1390	160	13.75
1605	160	12
1380	125	12
1595	125	12
1780	140	14
1350	140	12
1350	144	9.95
1580	144	12.1
630	90	10
840	100	10
1410	150	13.7

Chipper Knives



Technical Features

Parallelism

0,05/1000 mm to 0,1/1000 mm

Surfaces

Standard Ra 0,8 μm by request Ra 0,4 μm

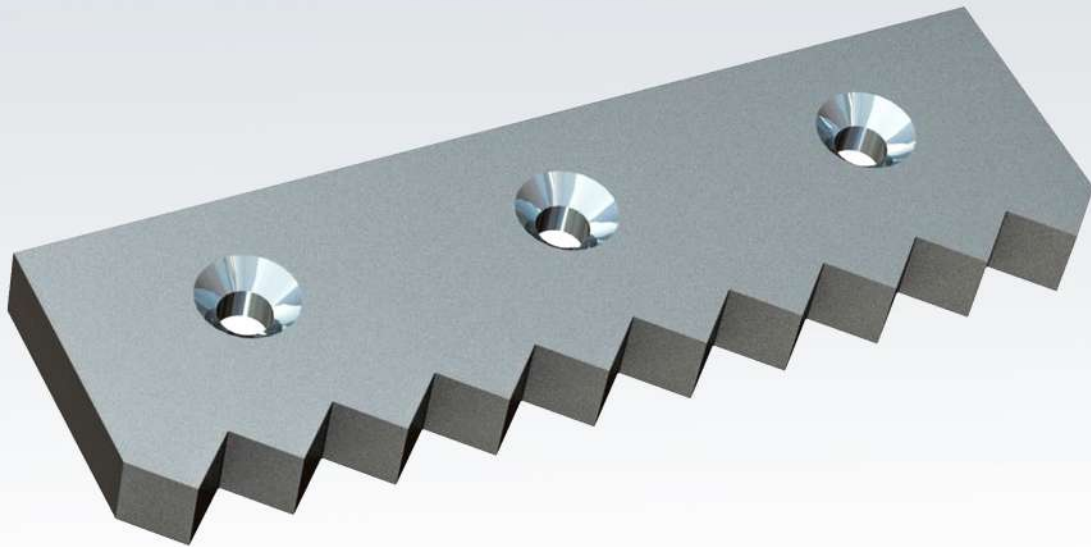
Hardness

Depending on raw material Werkstoff ± 1 HRC/ ± 2 HRC

Tolerances

according to DIN ISO 2768 M

Counter Knife



Technical Specifications

Knife Features	- Medium wear / medium toughness
Article Group	- Counter knife shredder bed knife
Length	- 349.00
Width	- 104.50
Height	- 28.00
Weight in kg	- 6.94
Material Hardness	- AISI D2 DIN 1.2379 57-59 HRC

Corrugated Knives



Size of Corrugated cutting Knives/Rubber cutting knives (mm)

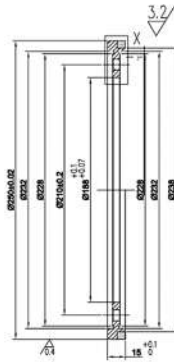
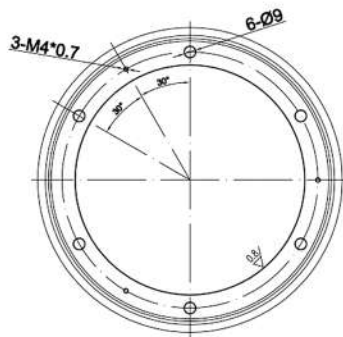
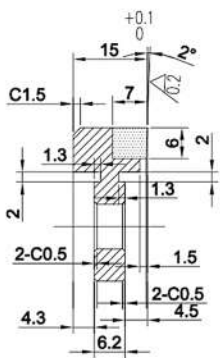
Outer Diameter	Inner Diameter	Thickness
200	122	1.5
240	32	1.2
250	105	1.6
260	140	1.6
260	112	1.6
260	158	1.6
270	168	1.6
270	170	1.6
81	19	1.25
190	115.5	14
260	158.1	1.1
265	112	14

Continue...



Knives for Disposable Paper Industry

Rewinder Bottom Industry

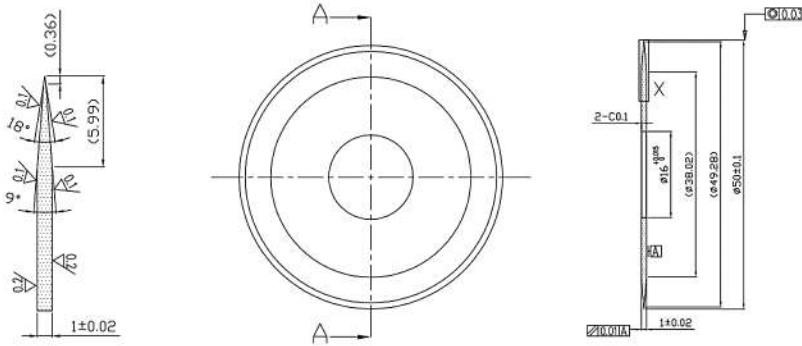


Dimension(mm)	OD(mm)	ID(mm)	Thickness(mm)	Material
Φ250*Φ200*38	Φ250	Φ200	38	Inlaid TC ring
Φ250*Φ200*20	Φ250	Φ200	20	Inlaid TC ring
Φ250*Φ188*25	Φ250	Φ188	25	Inlaid TC ring
Φ250*Φ188*20	Φ250	Φ188	20	Inlaid TC ring
Φ250*Φ188*15	Φ250	Φ188	15	Inlaid TC ring
Φ250*Φ180*25	Φ250	Φ180	25	Inlaid TC ring
Φ250*Φ180*15	Φ250	Φ180	15	Inlaid TC ring
Φ250*Φ140*20	Φ250	Φ140	20	Inlaid TC ring
Φ250*Φ180*15	Φ250	Φ180	15	Inlaid TC ring
Φ250*Φ138*15	Φ250	Φ138	15	Inlaid TC ring
Φ240*Φ188*30	Φ240	Φ188	30	Inlaid TC ring
Φ210*Φ188*50	Φ210	Φ188	50	Inlaid TC ring
Φ210*Φ180*25	Φ210	Φ180	25	Inlaid TC ring

Continue...

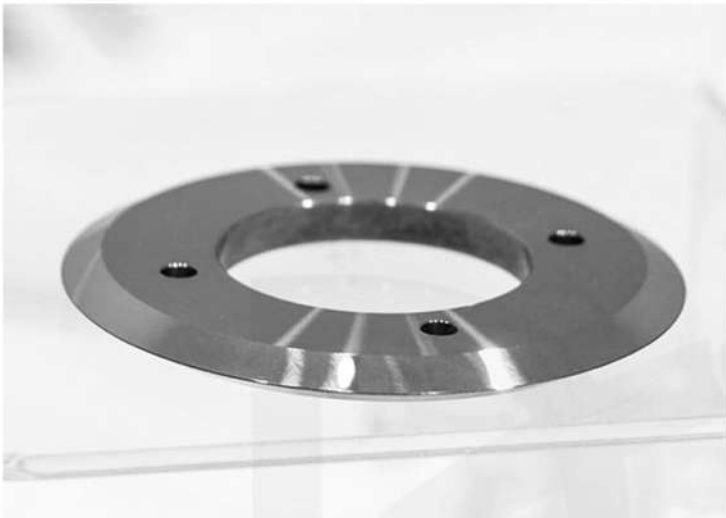


Circular Slitting Blades for Paper Tube



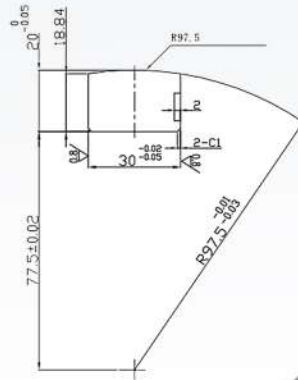
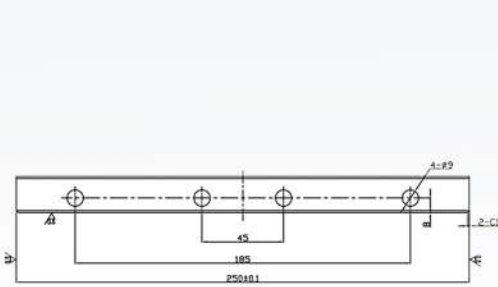
Dimension(mm)	OD(mm)	ID(mm)	Thickness(mm)	Knives edge
Φ50*Φ16*1	Φ50	Φ16	1	Single or double edges
Φ76*Φ25.4*1.1/1.2	Φ76	Φ25.4	1.1/1.2	
Φ80*Φ25.4*1.1/1.2	Φ80	Φ25.4	1.1/1.2	
Φ90*Φ25.4*1.1/1.2	Φ90	Φ25.4	1.1/1.2	
Φ100*Φ25.4*1.1~1.5	Φ100	Φ25.4	1.1~1.5	
Φ110*Φ25.4*1.1~2	Φ110	Φ25.4	1.1~2	
Φ120*Φ25.4*2	Φ120	Φ25.4	2	
Φ130*Φ25.4*2	Φ130	Φ25.4	2	

Continue...



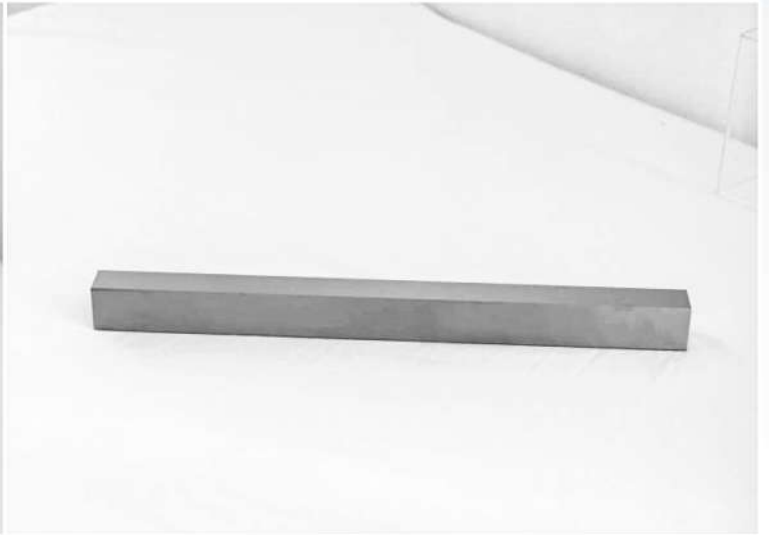
Knives for Disposable Paper Industry

Long Knives for Wet Tissue

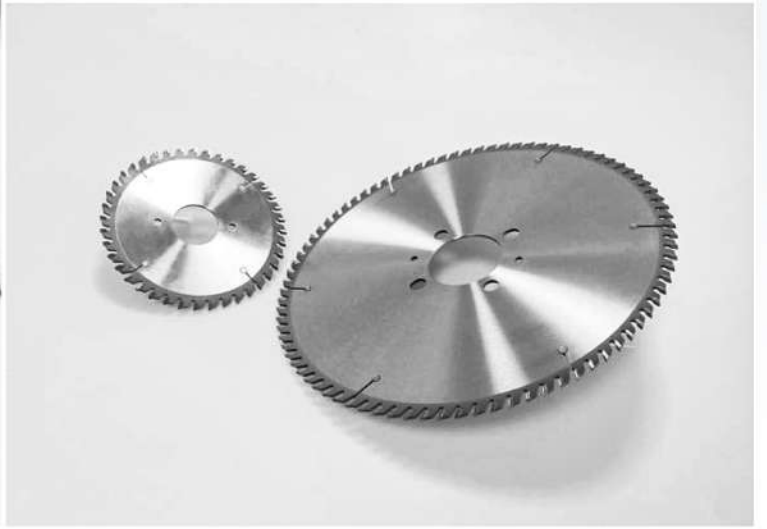
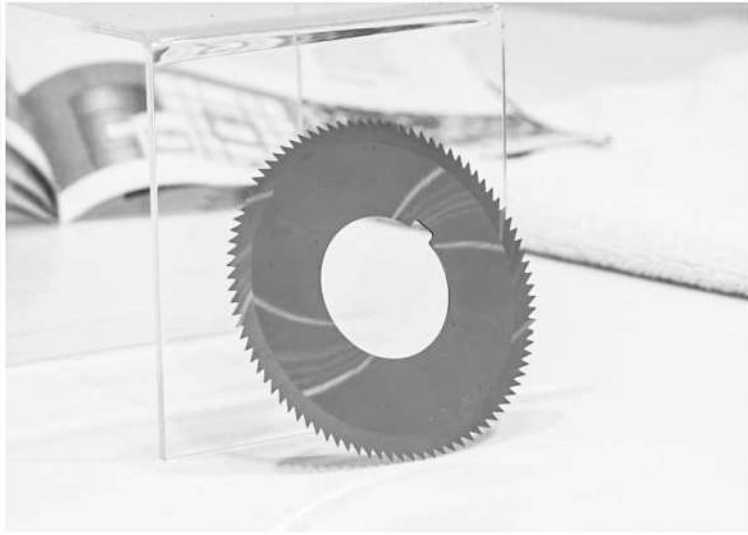
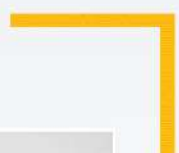


Dimension(mm)	Length(mm)	Width(mm)	Height(mm)
130*20*8	130	20	8
120*37*5	120	37	5
250*25*20	250	25	20
250*30*20	250	30	20
300*25*20	300	25	20
300*30*20	300	30	20

Continue...



Continue...





PRINTING AND GRAPHIC INDUSTRY

Binding & Stitching Knives



Specification

- High Efficient.
- Low machine down time.
- Accurate sizing.
- Combination available in HCHCr D-2, D-3.

Parameters

- Different grade of allow steels to fit customer's requirements.
- Special heat treatment for metallurgic control.
- Correct balance between toughness and brittleness for shocks and wear resist
- Perfect machine sets for interchangeability.
- Parallelity and dimensional accuracy for smooth operations.

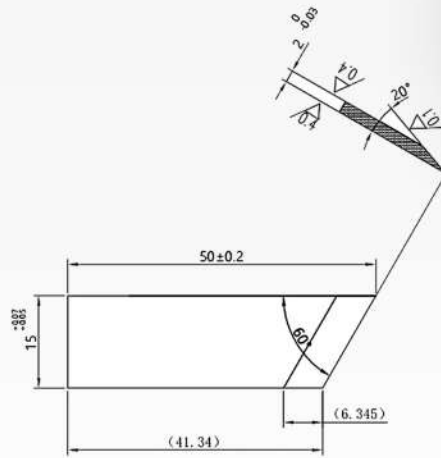
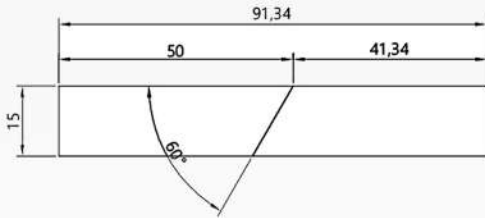
Profile and Perforating Knives



Technical Specification

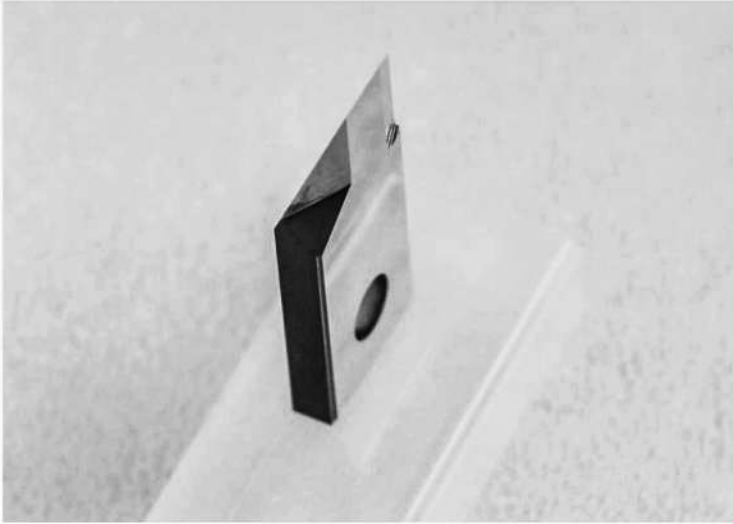
Outer diameter	- 50 – 150 mm
Inner diameter	- 19 – 70 mm
Strength	- 2,8 – 6,35 mm
Standard cutting angle	- 30° / 45° / 60°

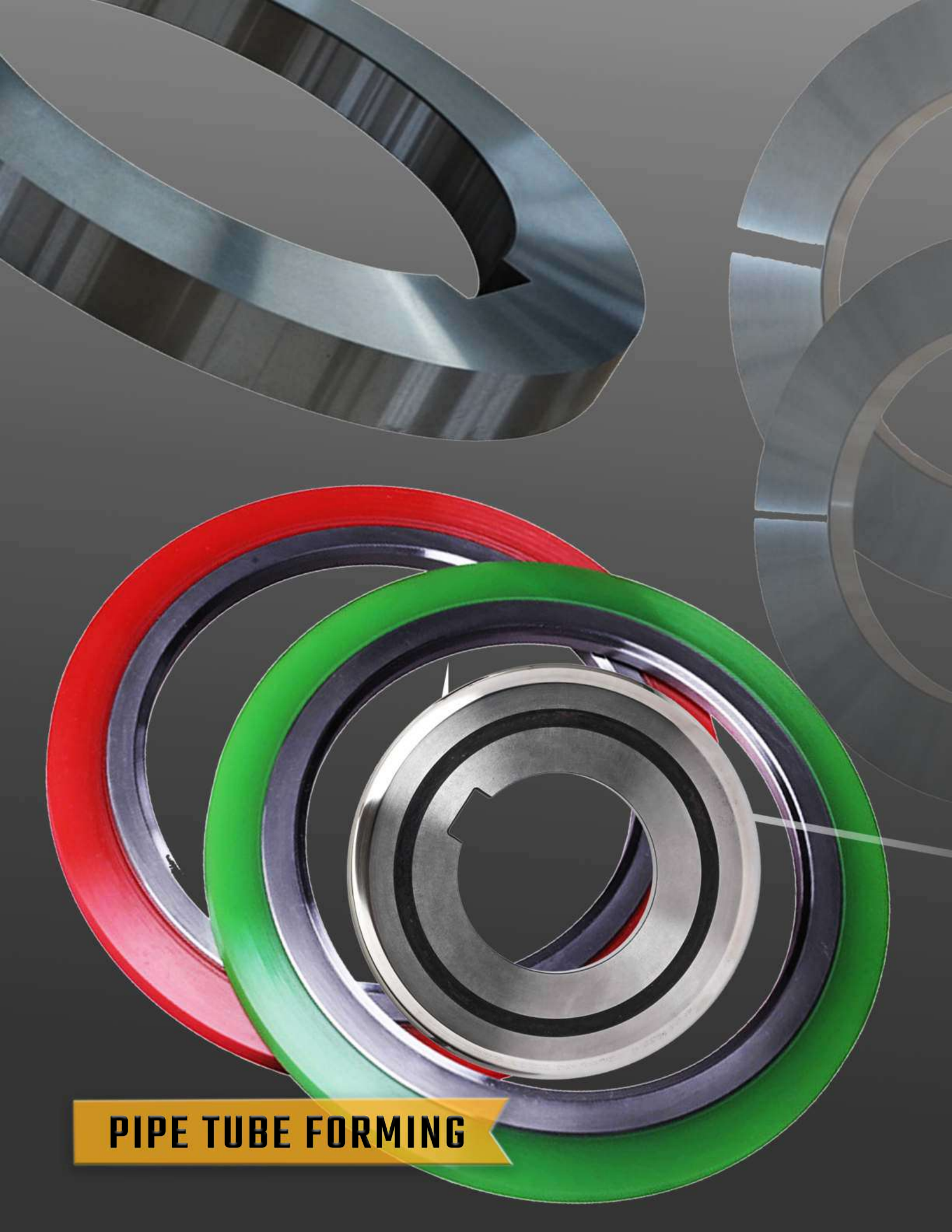
Blades for Packing and Printing Industry



No.	Dimension(mm)	No.	Dimension(mm)	Knives Edge	Material
1	72*14*4	10	50*16*2	1. Single edge 2. Double edge 3. Custom edge	Tungsten Carbide
2	72*14*9	11	50*15*2		Tungsten Carbide
3	65*18*15	12	50*15*1.6		Tungsten Carbide
4	63*14*4	13	50*12*2		Tungsten Carbide
5	55*18*5	14	45*15*3		Tungsten Carbide
6	50*15*3	15	38*15*3		Tungsten Carbide
7	50*14.5*4	16	32*14*3.7		Tungsten Carbide
8	50*14*3.5	17	21.2*18*2.8		Tungsten Carbide
9	60*15*2	18	20.8*8*5		Tungsten Carbide

Continue...





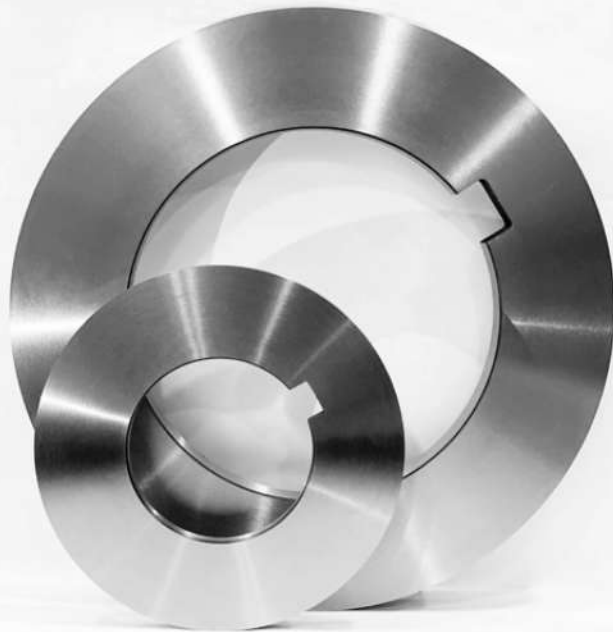
PIPE TUBE FORMING

Rubber Spacer Knives



Size of Metal Shear Blades Rubber Spacer (mm)

Outer Diameter	Inner Diameter	Thickness
114	100	40
152	140	50
200	165	92
200	180	55
200	180	50
280	240	92
450	410	105
200	115	15
320	220	30
420	160	40
600	300	40



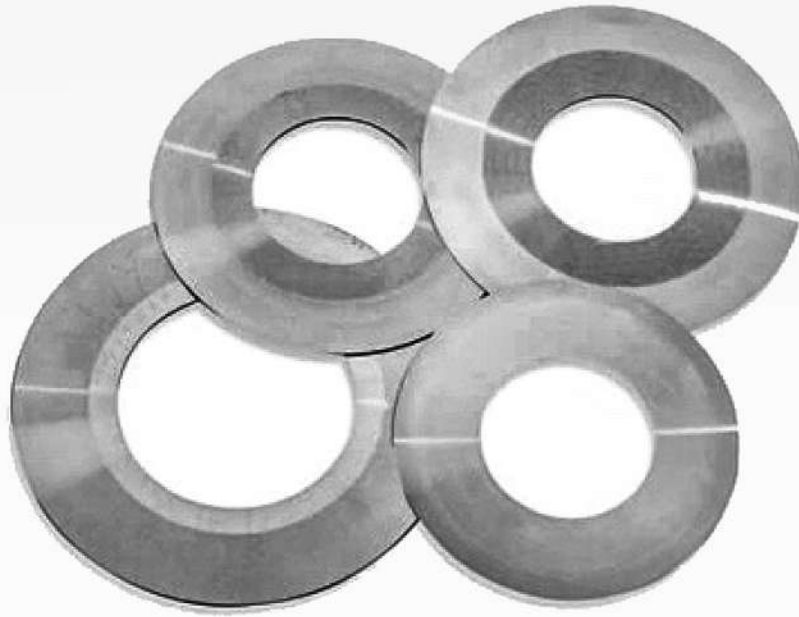
Properties:

- Available in D2,D3,HSS,H11,H13
- Used for Slitting & trimming mild steel, CRGO, CRNGO, Stainless Steel, Aluminium, Brass & Copper
- Sharp, uniform shearing edge after regrinding.
- Manufacture up to 600mm OD
- Optimum hardness for wear resistance
- Cutting capacity range: 0.1mm to 24mm thick strip



Properties:

- Used on arbor shift with cutters and overarm shaft with discs
- High precision with thickness tolerances up to ± 5 microns.
- Tool steel or stainless steel quality
- Utilization of ergonomic advantages
- Divided spacers for subsequent knife clearance corrections
- Quick changing of special gauge spacers
- Light weight helps operator and causes less fatigue
- Spacers provide uniform distance between the rotary slitting knives.



Properties:

- Separator discs are used to maintain distance between slits.
- Single & Double Angle and various thickness
- Finest Steel (EN9,52100, Spring Steel)
- Chrome plating option available to reduce friction between plate face & slit edge

Forming Rolls

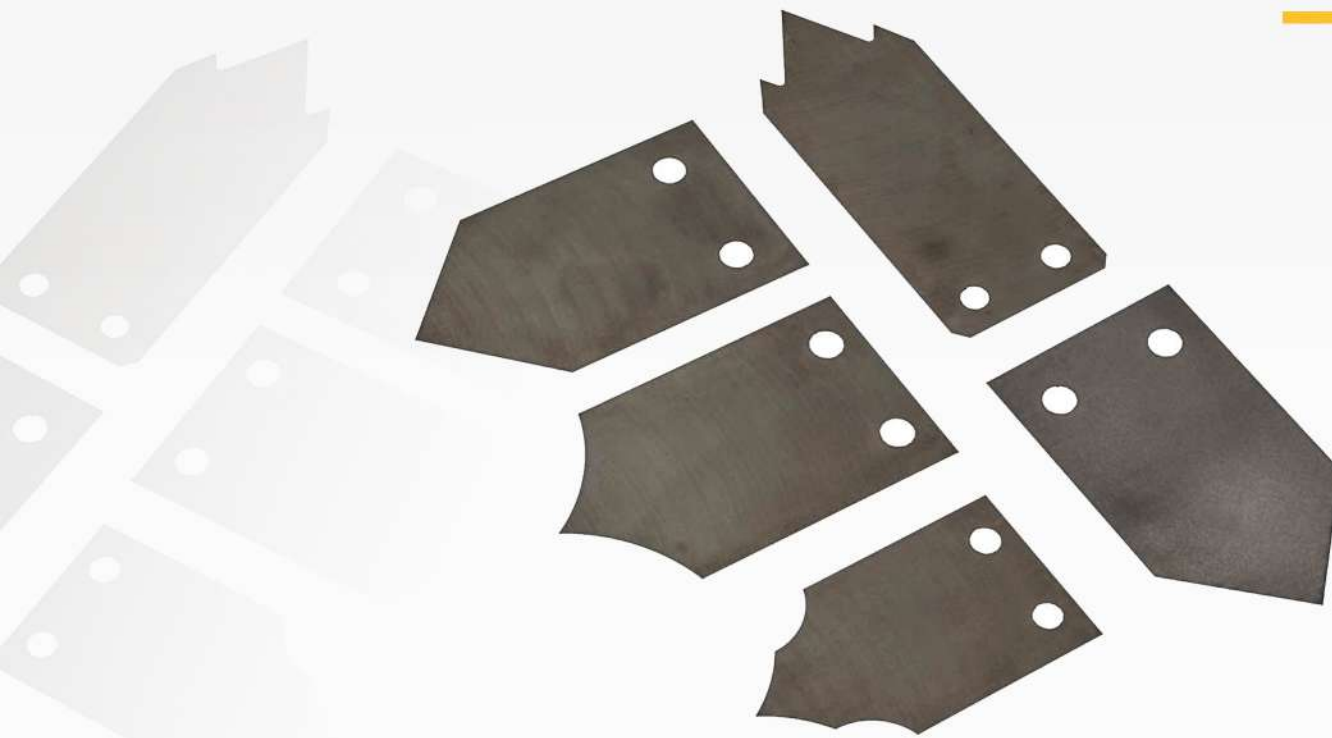


For closed and open profiles

Properties:

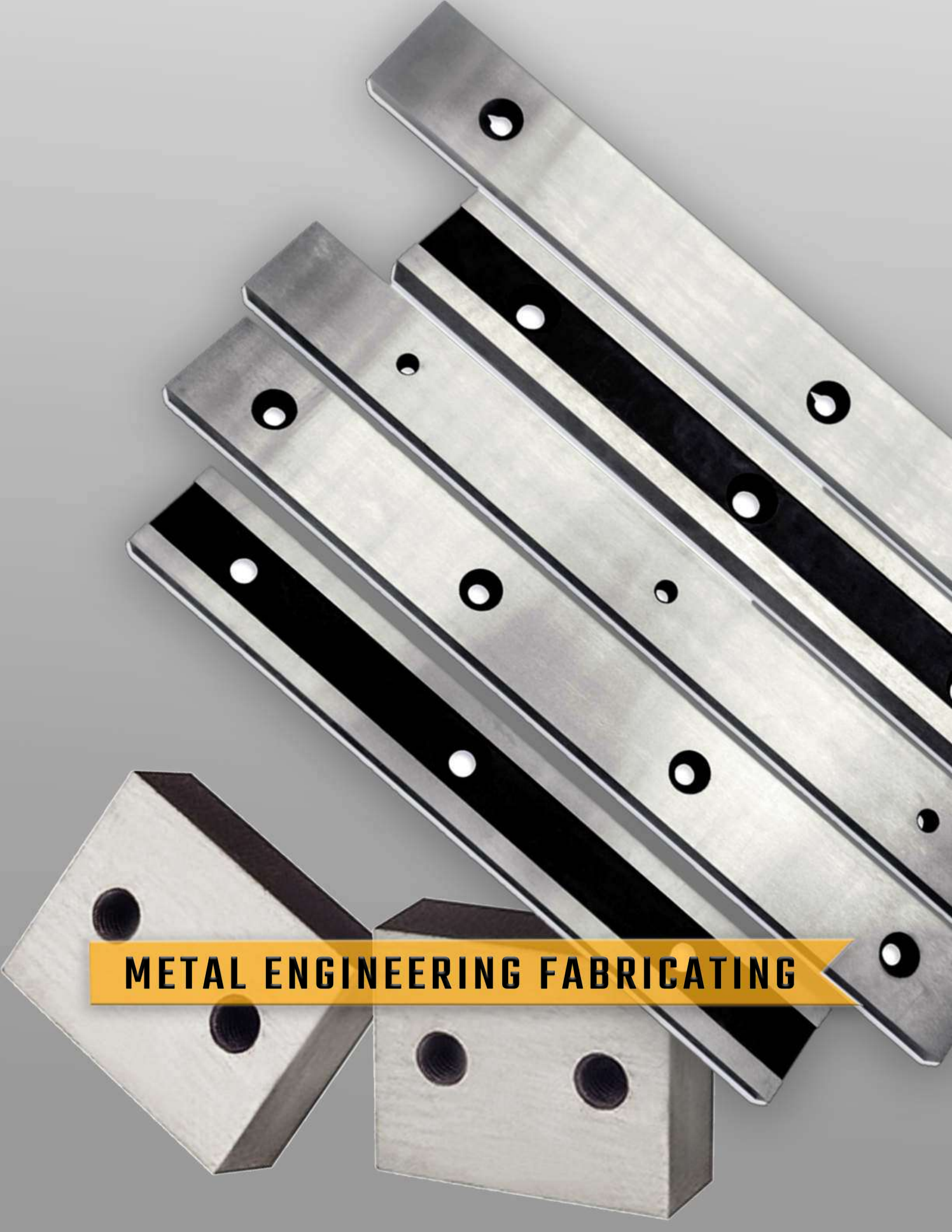
- Entire range of forming rolls for the production of tubes, with diameters ranging from 0.12 to 14 inches.
- Materials like D3/D2/H13 to incorporate options for rolls
- Manufactured in special steel grades and tungsten carbide, with high quality surface finish of the parent material.
- Rolls made with special steel grades offer superior wear quality, longer life
- Rolls are manufactured with their working surface ground & polished.

Tube Cut Off/ Alfa Shears



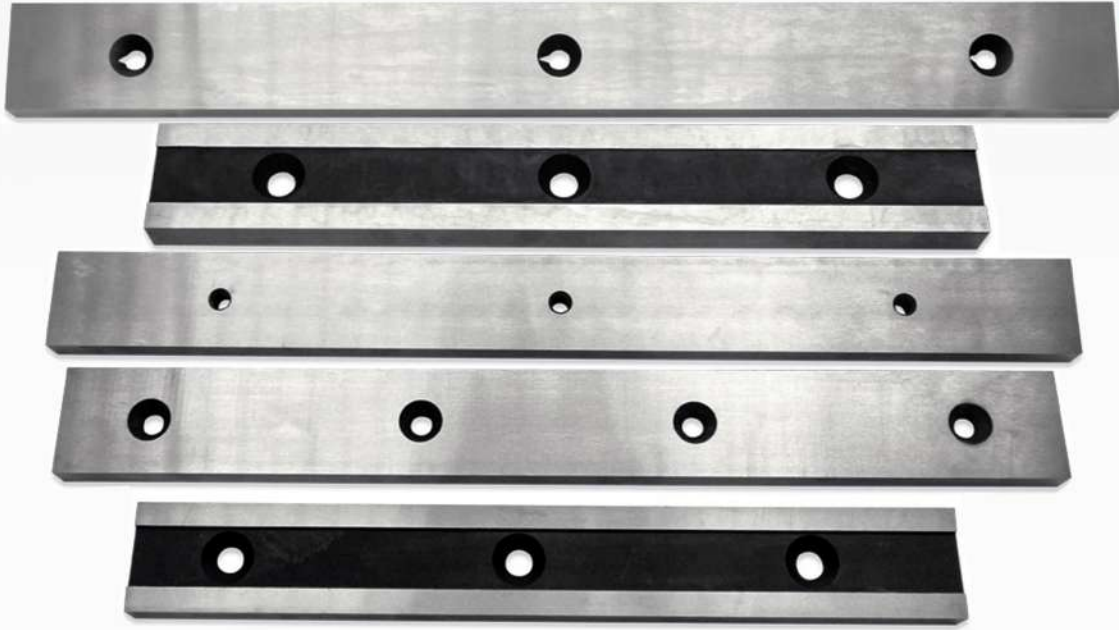
Properties:

- Tube cut off knives are manufactured in both, tool steel and high speed steel.
- The high speed steel offers increased blade life, strength & flatness.
- We offer a wide range of coatings to increase production and reduce scrap, such as TiN, TiCN, CrN, TiAlN etc.



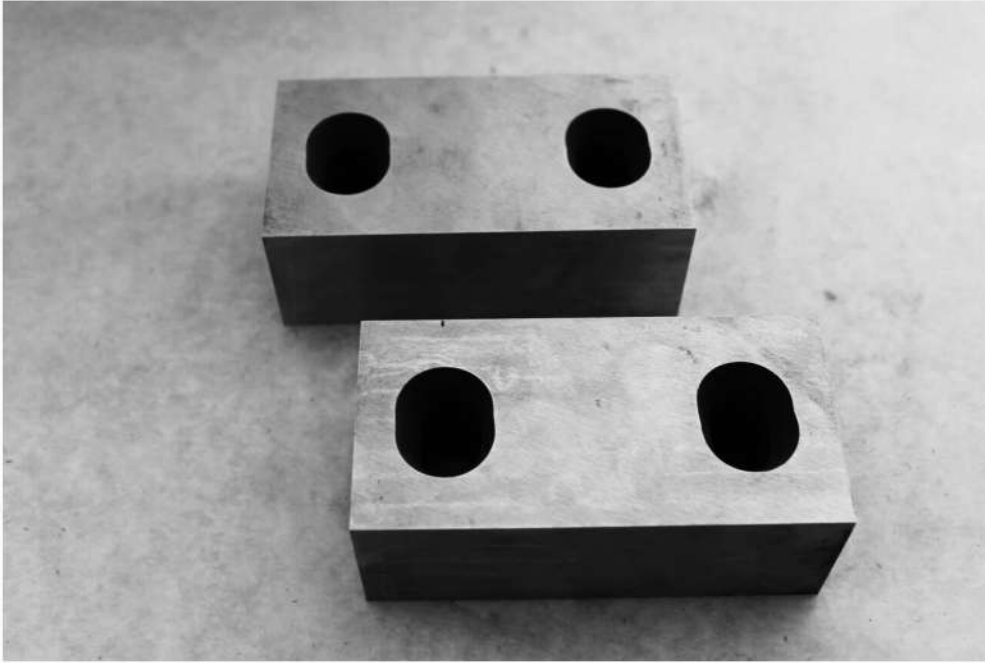
METAL ENGINEERING FABRICATING

Guillotine Shearing Knives



Length	Width	Thickness
508	70	22
610	100	32
810	80	25
1050	60	15
1245	80	25
1340	80	25
2032	70	22
2050	90	25
3150	70	20
3200	85	25

Hot Crop Shears / Billet



Application :

- Used for shearing billets

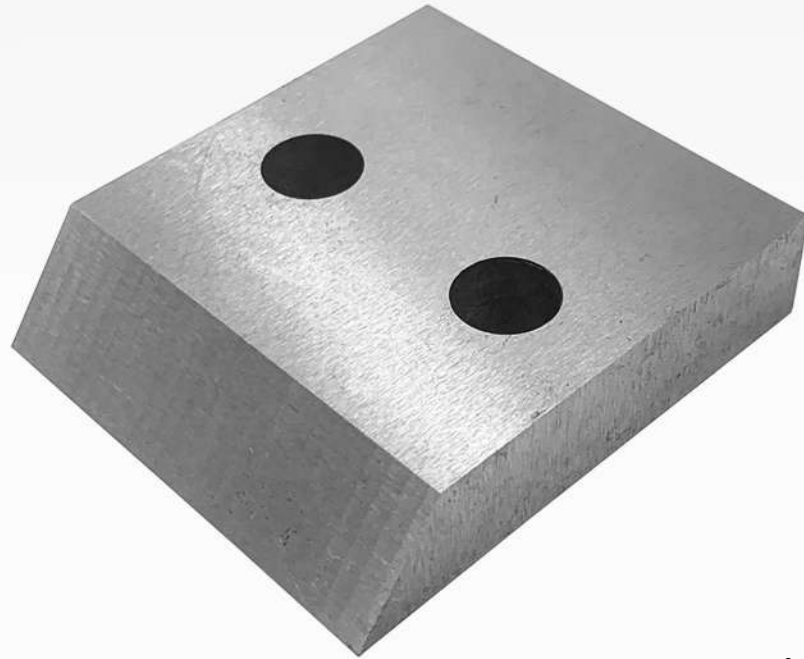
Material Grades :

Hot Die steel

Characteristics :

- Stringent metallurgical control.
- Special heat treatment & high temperature tempering.
- Blade hardness retention upto cutting temperature of 1000o C.
- High dimensional & edge retention at high temperature.

Crop & Billet Shears



Application :

Crop Shears for Angles, Channels, T sections, Beam, Round, Square & other sections.

Material Grades :

High Chromium steel,
Shock resistant steel

Characteristics :

- Precise geometry of cutting edge.
- Perfect matching set for interchangeability.
- Special heat treated & metallurgical control.

The image features a collection of cold-rolled steel components. In the upper right, there is a stack of five cylindrical shafts of varying diameters, each with a distinct shoulder or step. The background is filled with several large, circular steel discs, some of which have a central hole. The lighting is dramatic, highlighting the metallic sheen and the precision of the manufacturing process.

COLD ROLLING STEEL PROCESSING



Application :

For CR mills

Material Grades :

D3, D2, 52100, HSS, Hot Die

Characteristics :

- Engineered for optimum utilization
- Uniform hardness & mirror surface finish.
- Optimum combination of wear resistance & toughness.
- Perfect concentricity and cylindricity.
- Ultrasonically tested.
- Precise geometric tolerances.

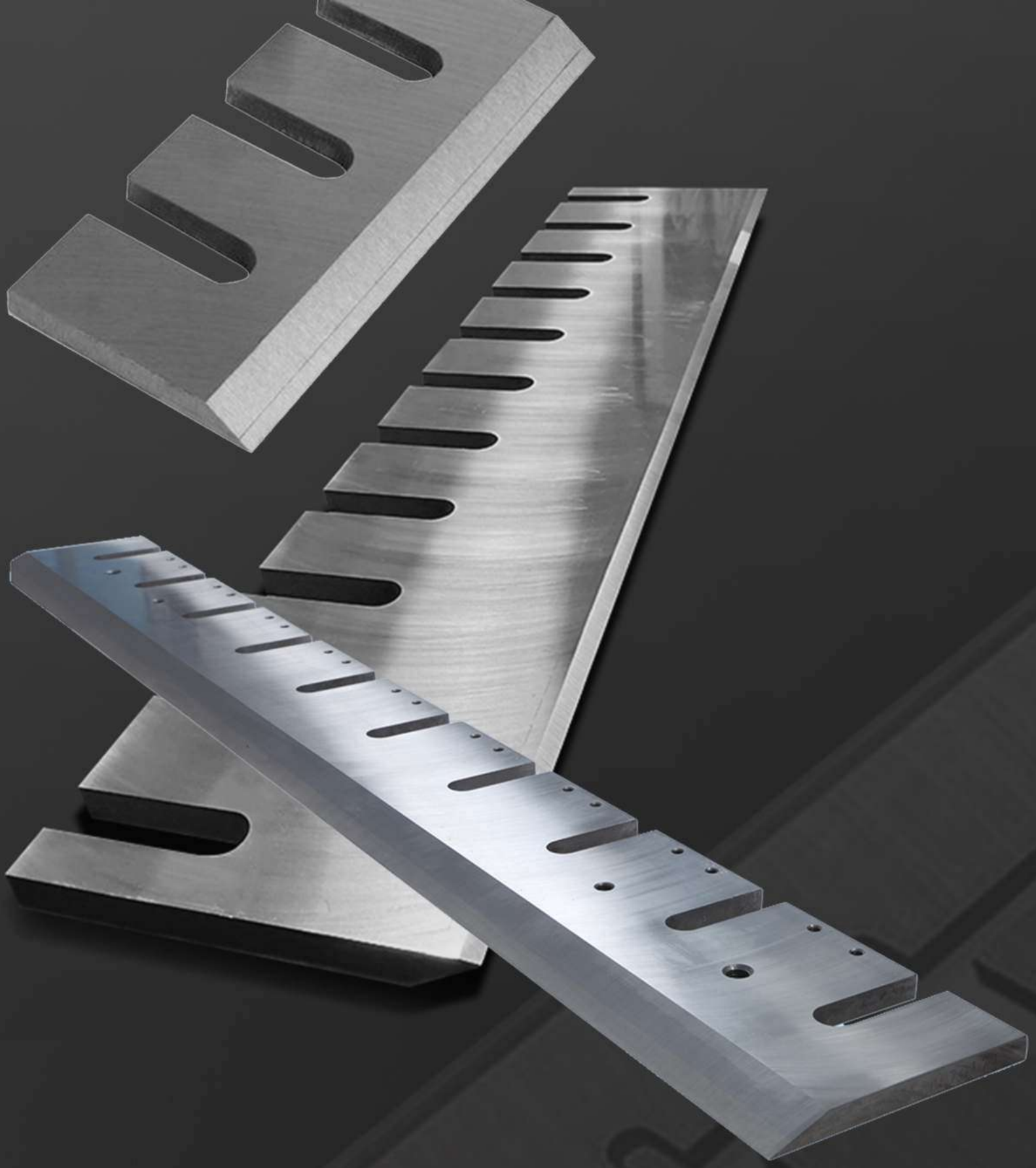


Application :

- Available in D2,D3,HSS,H11,H13
- Used for Slitting & trimming mild Steel, CRGO, CRNGO, Stainless Steel, Aluminium, Brass & Copper
- Sharp, Uniform shearing edge after Regrinding.

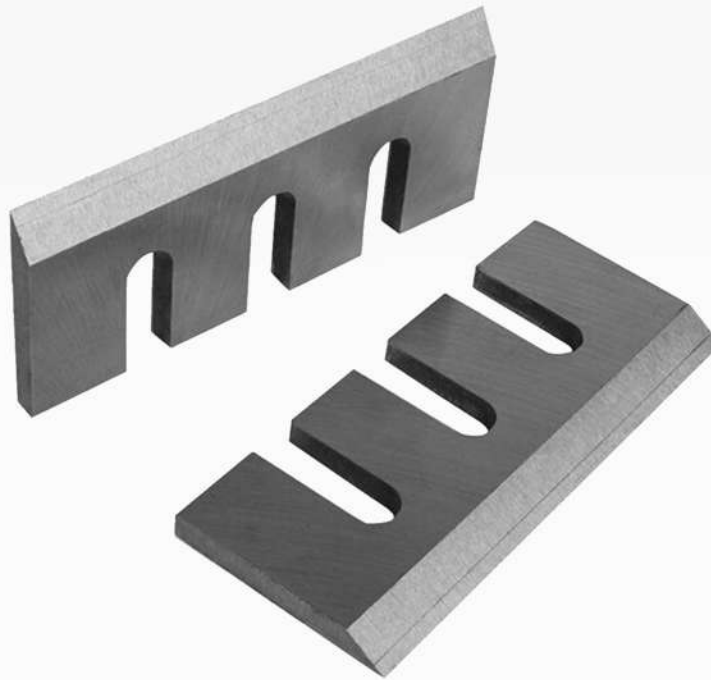
Material Grades :

- Thickness tolerance 0.0015mm ; Flatness tolerance 0.001mm (depends on OD & thickness)
- Surface finish: ground, lapped and polished.
- Lapping for finish upto 0.1 Ra Cutting capacity range: 0.1mm to 24mm thick strip.



WOOD INDUSTRY

Wood Industry Chipper Knives



Wood Industry Chipper Knives (mm)

Length	Width	Thickness	Inlay Size
780	220	20	Solid
665	220	20	Solid
850	220	20	Solid
875	220	20	Solid
600	180	20	Solid
669	290	25	Solid
258	75	6.5	Solid
482	110	14	Solid
880	180	16	Solid
665	220	20	Solid

Veneer Rotary Knives



Veneer Rotary Knives/Peeling Knives (mm)

Length	Width	Thickness	Inlay Size
1270	180	16	80+/-2mm
1397	197	16	100+/-2mm
1400	180	16	80+/-2mm
1500	180	16	80+/-2mm
1700	197	16	100+/-2mm
2750	180	18	80+/-2mm
2760	200	16	100+/-2mm
3300	220	16	100+/-2mm
4040	235	20	100+/-2mm
4200	220	16	100+/-2mm

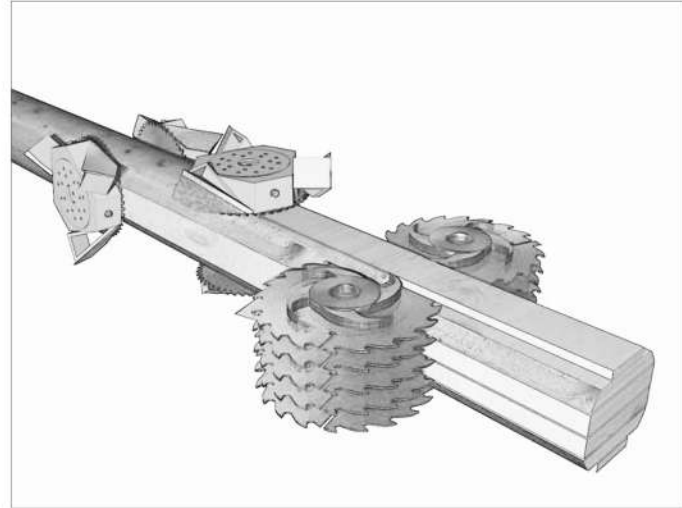
Wood Planner Knives



Wood Planer Knives (mm)

Length	Width	Thickness	Inlay Size
310	25/30/35	3	Solid
410	25/30/35	3	Solid
510	25/30/35	3	Solid
610	25/30/35	3	Solid
1050	25/30/35	3	Solid
1300	25/30/35	3	Solid
460	38	6	Solid
610	38	6	Solid
82	29	3	Solid
110	29	3	Solid

Canter/Slabber Knives



Material of knives

- special chipper steel developed for manufacture of chipper canter and slabber knives

Use:

- The knives are used in canter and slabber units which are part of sawmilling lines

Characteristics:

- Heat treatment made in a special computer-controlled furnace.
- Manufacture of any knife as per drawing documentation or according to a sample



PLASTIC RUBBER RECYCLING INDUSTRY

Granulating knives/Granulator



Granulating knives/Granulator (mm)

Length	Width	Thickness
500	80	16
400	130	13.5
315	100	16
250	110	17
250	76	15
485	100	22
123	65	12
190	95	15.5
210	90	20
299	85	21.5
299	80	16.5

Shredder Blades/Knives



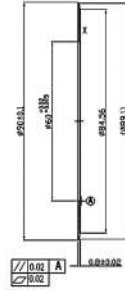
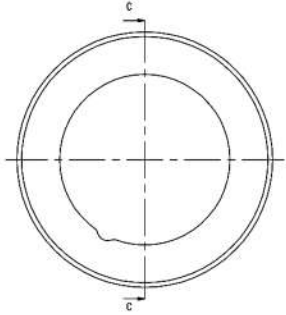
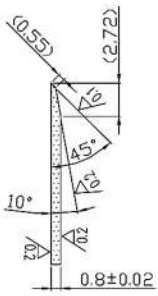
Dimensions:

- Various dimensions and shapes
- Up to 900 mm of outside diameter

Quality:

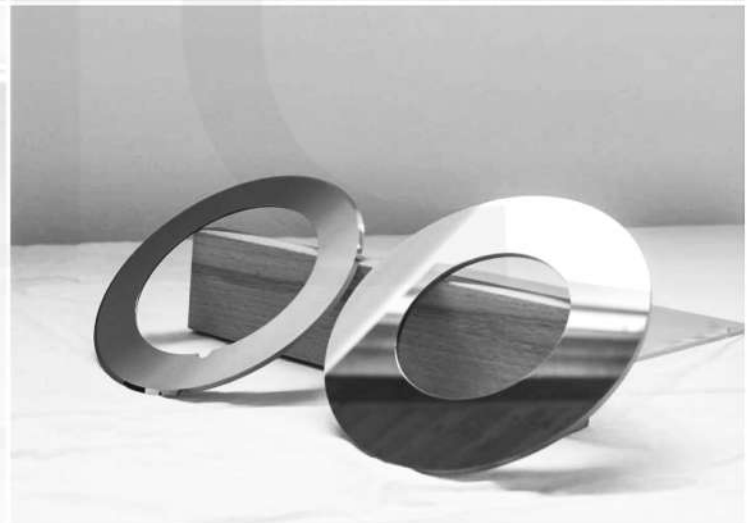
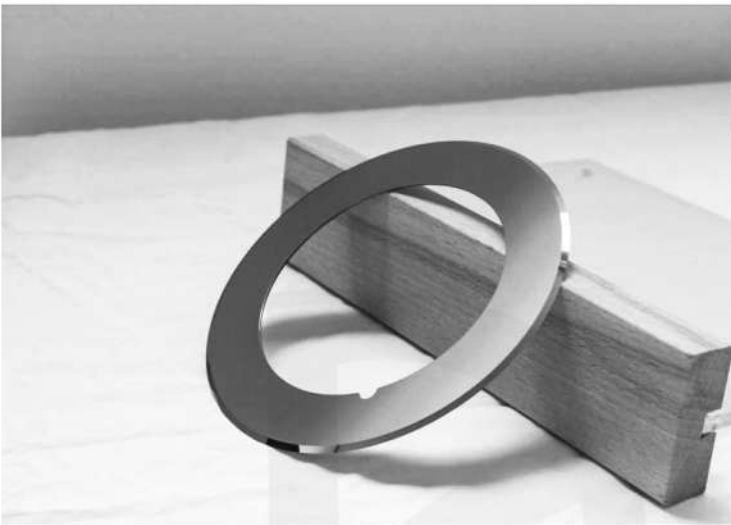
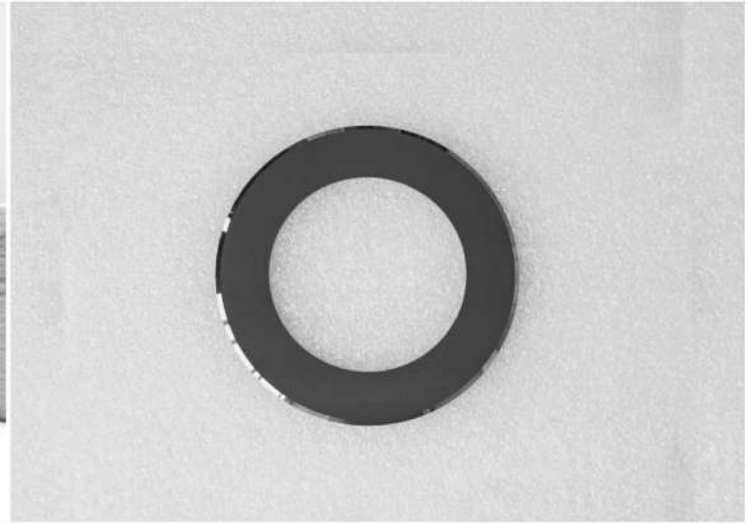
- High precision manufacturing (milling and grinding) for the finest cutting features
- Long wear resistance
- Custom made
- 100% repeatability of the quality

Blades for Lithium Industry

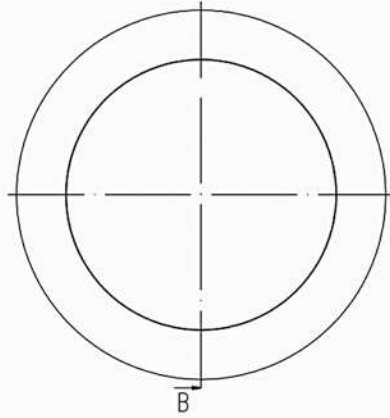
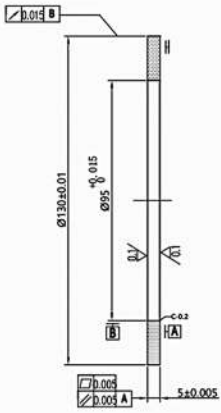


No.	Dimension(mm)	No.	Dimension(mm)	Knives Edge	Material
1	Φ90*Φ60*0.8	11	Φ90*Φ60*0.2	1. Single edge 2. Double edge 3. Custom edge	Tungsten Carbide
2	Φ100*Φ65*0.7	12	Φ100*Φ65*2		Tungsten Carbide
3	Φ100*Φ65*1	13	Φ100*Φ65*3		Tungsten Carbide
4	Φ105*Φ70*1.2	14	Φ70*Φ45*5		Tungsten Carbide
5	Φ110.2*Φ90*1	15	Φ110*Φ75*3		Tungsten Carbide
6	Φ110*Φ90*1	16	Φ110*Φ90*3		Tungsten Carbide
7	Φ130*Φ88*1	17	Φ130*Φ70*3/5		Tungsten Carbide
8	Φ130*Φ97*0.8/0.3	18	Φ130*Φ95*4		Tungsten Carbide
9	Φ130*Φ97*1	19	Φ130*Φ95*5		Tungsten Carbide
10	Φ68*Φ46*0.5 upper	20	Φ60*Φ40*5 lower		Tungsten Carbide

Continue...

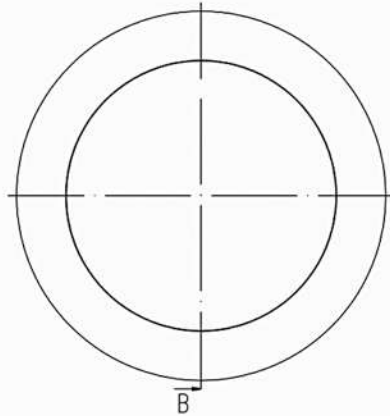
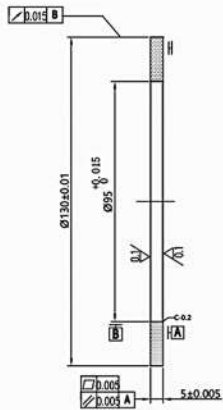


Knives for Metal Slitting



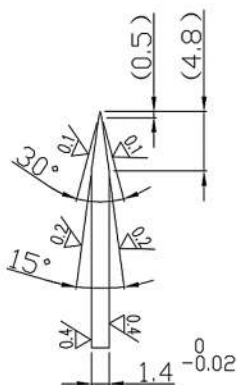
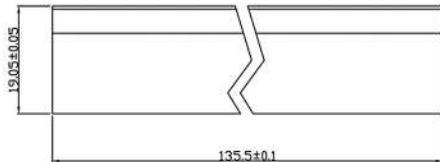
Dimension(mm)	OD(mm)	ID(mm)	Thickness(mm)	Material
$\Phi 340 * \Phi 225 * 20$	340	225	20	Tungsten Carbide
$\Phi 285 * \Phi 180 * 5$	285	180	5	Tungsten Carbide
$\Phi 285 * \Phi 180 * 10$	285	180	10	Tungsten Carbide
$\Phi 250 * \Phi 160 * 8$	250	160	8	Tungsten Carbide
$\Phi 250 * \Phi 145 * 10$	250	145	10	Tungsten Carbide
$\Phi 250 * \Phi 190 * 15.3$	250	190	15.3	Tungsten Carbide
$\Phi 250 * \Phi 150 * 12$	250	150	12	Tungsten Carbide
$\Phi 250 * \Phi 160 * 10$	250	160	10	Tungsten Carbide
$\Phi 250 * \Phi 110 * 10$	250	110	10	Tungsten Carbide
$\Phi 260 * \Phi 160 * 10$	260	160	10	Tungsten Carbide
$\Phi 204.1 * \Phi 127 * 11$	204.1	127	11	Tungsten Carbide
$\Phi 160 * 100 * 11$	160	100	11	Tungsten Carbide
$\Phi 160 * \Phi 90 * 7.93$	160	90	7.93	Tungsten Carbide

Knives for Metal Slitting



Dimension(mm)	OD(mm)	ID(mm)	Thickness(mm)	Material
$\phi 340 * \phi 225 * 20$	340	225	20	Tungsten Carbide
$\phi 285 * \phi 180 * 5$	285	180	5	Tungsten Carbide
$\phi 285 * \phi 180 * 10$	285	180	10	Tungsten Carbide
$\phi 250 * \phi 160 * 8$	250	160	8	Tungsten Carbide
$\phi 250 * \phi 145 * 10$	250	145	10	Tungsten Carbide
$\phi 250 * \phi 190 * 15.3$	250	190	15.3	Tungsten Carbide
$\phi 250 * \phi 150 * 12$	250	150	12	Tungsten Carbide
$\phi 250 * \phi 160 * 10$	250	160	10	Tungsten Carbide
$\phi 250 * \phi 110 * 10$	250	110	10	Tungsten Carbide
$\phi 260 * \phi 160 * 10$	260	160	10	Tungsten Carbide
$\phi 204.1 * \phi 127 * 11$	204.1	127	11	Tungsten Carbide
$\phi 160 * 100 * 11$	160	100	11	Tungsten Carbide
$\phi 160 * \phi 90 * 7.93$	160	90	7.93	Tungsten Carbide

Thin Blades for Chemical Fiber Industry



No.

Common Size(mm)

Material

1

193*18.9*0.884

Tungsten Carbide

2

170*19*0.884

Tungsten Carbide

3

140*19*1.4

Tungsten Carbide

4

140*19*0.884

Tungsten Carbide

5

135.5*19.05*1.4

Tungsten Carbide

6

135*19.05*1.4

Tungsten Carbide

7

135*18.5*1.4

Tungsten Carbide

8

118*19*1.5

Tungsten Carbide

9

117.5*15.5*0.9

Tungsten Carbide

10

115.3*18.54*0.84

Tungsten Carbide

11

95*19*0.884

Tungsten Carbide

12

90*10*0.9

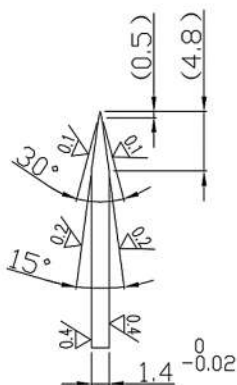
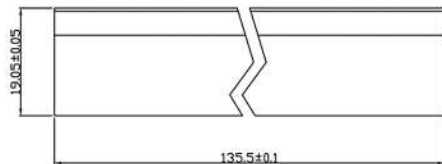
Tungsten Carbide

13

74.5*15.5*0.884

Tungsten Carbide

Thin Blades for Chemical Fiber Industry



No.

Common Size(mm)

Material

1

193*18.9*0.884

Tungsten Carbide

2

170*19*0.884

Tungsten Carbide

3

140*19*1.4

Tungsten Carbide

4

140*19*0.884

Tungsten Carbide

5

135.5*19.05*1.4

Tungsten Carbide

6

135*19.05*1.4

Tungsten Carbide

7

135*18.5*1.4

Tungsten Carbide

8

118*19*1.5

Tungsten Carbide

9

117.5*15.5*0.9

Tungsten Carbide

10

115.3*18.54*0.84

Tungsten Carbide

11

95*19*0.884

Tungsten Carbide

12

90*10*0.9

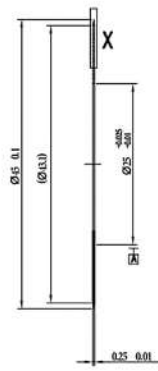
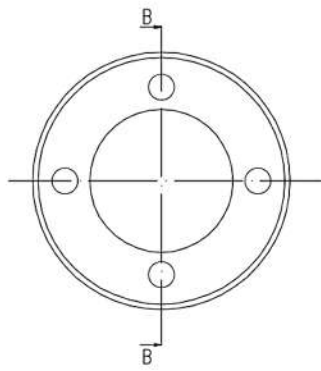
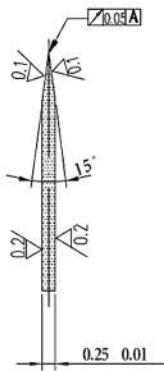
Tungsten Carbide

13

74.5*15.5*0.884

Tungsten Carbide

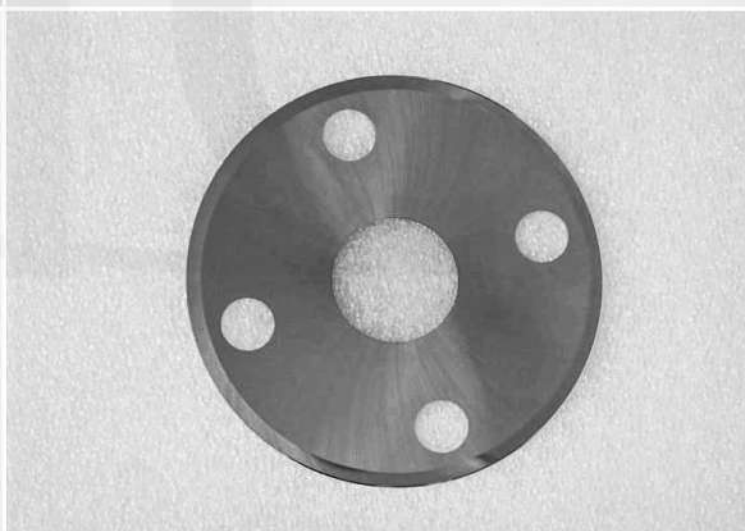
Circular Knives for Other Industries



Note: Customization available per customer's drawing or sample

No.	Size(mm)	Material
1	Ø20*4*2	Tungsten Carbide
2	Ø45*8*0.3	Tungsten Carbide
3	Ø45*25*0.25	Tungsten Carbide
4	Ø50*20*0.3/0.5	Tungsten Carbide
5	Ø75*20*0.25	Tungsten Carbide
6	Ø80*20*0.3/0.5	Tungsten Carbide
7	Ø90*60*1	Tungsten Carbide
8	Ø150*Ø32*1	Tungsten Carbide
9	Ø180*Ø40*2	Tungsten Carbide
10	Ø300*Ø160*3	Tungsten Carbide
11	Ø300*Ø210*3	Tungsten Carbide

Continue...



DIC – INDIA
DEDICATED IMPEX CO.

D – 189, Industrial Focal Point, Patiala
147003 Punjab, India
info@dictoolsindia.com
+91-95922-28222

DIC – UAE
DEDICATED IMPEX FZE

B.C. 1303260, Ajman Free Zone,
P.O. BOX: 47359, Ajman, UAE
info@dictoolsindia.com
(+971) 556721577

DiCTOOLS

A Brand by Dedicated Impex Co.