

DiC TOOLS

A Brand by Dedicated Impex Co.



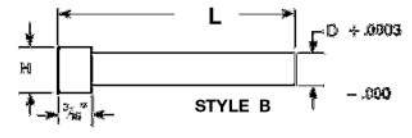
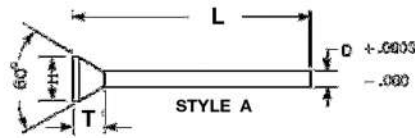
PUNCHES

Product Name	Page No.
HSS Punches.....	01
HSS Straight Punches.....	02
HSS Straight Punches for Medium Load.....	03
HSS Straight Punches for Heavy Load.....	04
Precision Piercing Punch.....	05-08
Headless Piercing Punch.....	09
HSS Tapered Head Punches.....	10
HSS Tapped Punches.....	11
HSS Shoulder Punches.....	12
HSS Shoulder Punches for Heavy Load.....	13
HSS Shoulder Punches Short Type.....	14
Standard Punch.....	15
Standard Punch Blanks.....	16
Carbide Punch Blanks.....	17
Cylindrical Head Punches.....	18-24
Headed Stepped Punch.....	25
Headless Stepped Punch	26
Block Punches	27-32
Pin Punches	33
Hexagon Punches.....	34-35

HSS Punches



MOLD & DIE



Set-Up Charges (Shaded area only)

2 1/2" - 4" = 35.00

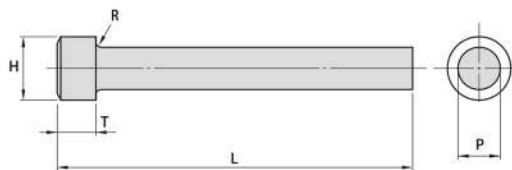
6" - 8" = 45.00

Dia. "D" Increment of .001	H	T	2 1/2"		3 1/2"	4"	6"	8"	10"	12"
			2"	6.20						
.010 - .014	1/32	1/16	2"	6.20	7.45	9.92	13.37	—	—	—
.015 - .019	1/32	1/16	2"	5.12	6.20	8.55	12.40	—	—	—
.020 - .029	3/64	1/16	2"	4.14	5.01	7.45	11.31	—	—	—
.030 - .036	1/16	1/16		3.44		6.86	10.20	—	—	—
.037 - .046	5/64	1/16		3.44		6.86	9.44	17.27	28.38	—
.047 - .055	3/32	5/64		3.44		5.70	8.86	16.91	26.53	—
.056 - .064	7/64	5/64		4.59		5.86	9.01	16.47	28.74	—
.065 - .078	1/8	5/64		4.59		5.86	9.01	16.47	27.60	—
.079 - .087	9/64	3/32		4.59		5.86	9.01	16.47	26.51	—
.088 - .099	5/32	3/32		5.09		6.37	8.38	15.66	24.04	—
.100 - .120	11/64	3/32		5.09		6.37	8.38	15.66	24.04	—
.121 - .131	3/16	3/32		5.09		6.37	8.38	15.66	24.04	33.50
.132 - .147	13/64	3/32		5.45		6.71	8.69	14.68	22.39	31.30
.148 - .163	7/32	3/32		5.45		6.71	8.69	14.68	22.39	31.30
.164 - .179	15/64	3/32		5.45		6.71	8.69	14.68	22.39	31.30
.180 - .194	1/4	3/32		6.20		7.63	9.49	16.94	25.41	35.57
.195 - .210	17/64	3/32		6.20		7.63	9.49	16.94	25.41	35.57
.211 - .225	9/32	3/32		6.20		7.63	9.49	16.94	25.41	35.57
.226 - .241	19/64	3/32		7.33		8.66	10.51	18.20	27.07	37.91
.242 - .257	5/16	3/32		7.33		8.66	10.51	18.20	27.07	37.91
.258 - .272	21/64	3/16		7.33		8.66	10.51	18.20	27.07	37.91
.273 - .288	11/32	3/16		7.33		8.66	10.51	18.20	27.07	37.91
.289 - .304	23/64	3/16		8.49		10.72	11.87	21.58	30.40	42.59
.305 - .320	3/8	3/16		8.49		10.72	11.87	21.58	30.40	42.59
.321 - .336	25/64	3/16		8.49		10.72	11.87	21.58	30.40	42.59
.337 - .352	13/32	3/16		10.42		12.12	14.06	24.29	35.15	49.24
.353 - .368	27/64	3/16		10.42		12.12	14.06	24.29	35.15	49.24
.369 - .375	7/16	3/16		10.42		12.12	14.06	24.29	35.15	49.24
.376 - .436	D +.06 +.09	3/16		12.63		14.97	17.21	27.44	38.48	53.91
.437 - .484		3/16		14.35		17.72	20.12	30.60	41.78	58.47
.485 - .562		3/16		16.10		20.68	22.46	32.12	43.43	60.80
.563 - .625		3/16		18.28		24.26	26.37	36.10	47.39	66.48
.626 - 1.000										

QUOTED ON REQUEST



HSS Straight Punches



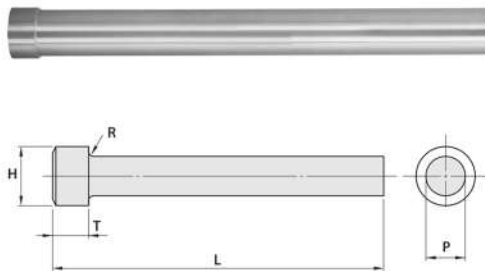
Tolerance	
H	0, -0.2
L	+/-0.5
P	0, -0.02
T	+/-0.3

- Head Length "T" of 50mm Punch - 3mm
- Head Length "T" of above 50mm Length Punches - 5mm
- Sizes below 4mm : No Head Annealing is done

HEAD DIA "H" (mm)	BODY DIA "P" (0.1 mm increments) min. "P" max.	OVERALL LENGTH "L" (mm)			
		50	75	100	150
3	1.1~2.0	50	75		
3.5	2.1~2.5	50	75		
4	2.5~3.0	50	75		
4.5	3.1~3.5	50	75		
5	3.6~4.0	50	75	100	
5.5	4.1~4.5	50	75	100	
6	4.6~5.0	50	75	100	
6.5	5.1~5.5	50	75	100	150
7	5.6~6.0	50	75	100	150
7.5	6.1~6.5	50	75	100	150
8	6.6~7.0	50	75	100	150
8.5	7.1~7.5	50	75	100	150
9	7.6~8.0	50	75	100	150
9.5	8.1~8.5	50	75	100	150
10	8.6~9.0	50	75	100	150
10.5	9.1~9.5		75	100	150
11	9.6~10.0		75	100	150
11.5	10.1~10.5		75	100	150

HEAD DIA "H" (mm)	BODY DIA "P" (0.1 mm increments) min. "P" max.	OVERALL LENGTH "L" (mm)		
		75	100	150
12	10.6~11.0	75	100	150
12.5	11.1~11.5	75	100	150
13	11.6~12.0	75	100	150
13.5	12.1~12.5	75	100	150
14	12.6~13.0	75	100	150
14.5	13.1~13.5	75	100	150
15	13.6~14.0	75	100	150
16	14.1~15	75	100	150
17	15.1~16	75	100	150
18	16.1~17	75	100	150
19	17.1~18	75	100	150
20	18.1~19	75	100	150
21	19.1~20	75	100	150
22	20.1~21	75	100	150
23	21.1~22	75	100	150
24	22.1~23	75	100	150
25	23.1~24	75	100	150
26	24.1~25	75	100	150

HSS Straight Punches for Medium Load



Tolerance

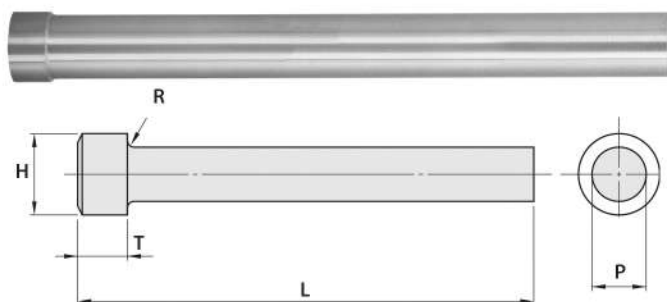
H 0, -0.2

L +/-0.5

P 0, -0.02

HEAD DIA "H" (mm)	BODY DIA "P" (0.1 mm increments) min. "P" max.	OVERALL LEN "L" (mm)				
		50	70	80	100	120
5	2.1~3.0	50	70	80		
6	3.1~4.0	50	70	80		
7	4.1~5.0	50	70	80		
8	5.1~6.0	50	70	80		
9	6.1~7.0	50	70	80	100	
10	7.1~8.0	50	70	80	100	
11	8.1~9.0	50	70	80	100	
12	9.1~10.0	50	70	80	100	120
13	10.1~11.0	50	70	80	100	120
14	11.1~12.0	50	70	80	100	120
15	12.1~13.0	50	70	80	100	120
16	13.1~14.0		70	80	100	120
17	14.1~15.0		70	80	100	120
18	15.1~16.0		70	80	100	120
19	16.1~17.0		70	80	100	120
20	17.1~18.0		70	80	100	120
21	18.1~19.0		70	80	100	120
22	19.1~20.0		70	80	100	120
23	20.1~21.0		70	80	100	120
24	21.1~22.0		70	80	100	120
25	22.1~23.0		70	80	100	120
26	23.1~24.0		70	80	100	120
27	24.1~25.0		70	80	100	120

HSS Straight Punches for Heavy Load

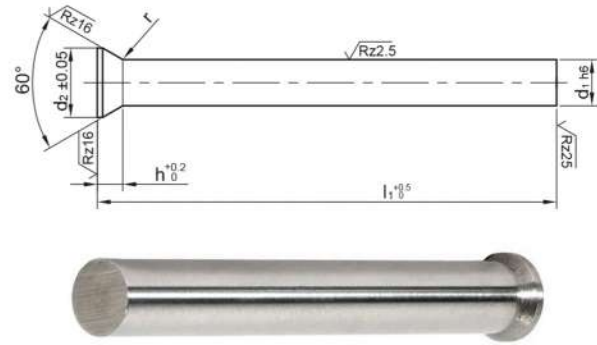


Tolerance	
H	0, -0.2
L	+/-0.5
P	0, -0.02

HEAD DIA "H" (mm)	BODY DIA "P" (0.1 mm increments) min. "P" max.	OVERALL LEN "L" (mm)				
		50	70	80	100	120
6	2.1~3.0	50	70	80		
7	3.1~4.0	50	70	80		
8	4.1~5.0	50	70	80		
9	5.1~6.0	50	70	80		
10	6.1~7.0	50	70	80	100	
11	7.1~8.0	50	70	80	100	
12	8.1~9.0	50	70	80	100	
13	9.1~10.0	50	70	80	100	120
14	10.1~11.0	50	70	80	100	120
15	11.1~12.0	50	70	80	100	120
16	12.1~13.0	50	70	80	100	120
17	13.1~14.0		70	80	100	120
18	14.1~15.0		70	80	100	120
19	15.1~16.0		70	80	100	120
20	16.1~17.0		70	80	100	120
21	17.1~18.0		70	80	100	120
22	18.1~19.0		70	80	100	120
23	19.1~20.0		70	80	100	120
24	20.1~21.0		70	80	100	120
25	21.1~22.0		70	80	100	120
26	22.1~23.0		70	80	100	120
27	23.1~24.0		70	80	100	120
28	24.1~25.0		70	80	100	120

Precision Piercing Punch

Material	Hardness HRC	
	Shaft	Head
D2	60~64	45~55
M2	62~66	
ASP		
CPM	60~64	
WC	Available on request	



Other sizes available on request

d ₁	d ₂	h	r	l ₁			
				71	80	100	120
0,30	0,9	0,72	0,2+0,2				
0,35		0,68					
0,40		0,63					
0,45		0,59					
0,50		0,55					
0,55	1,0	0,59					
0,60	1,1	0,63					
0,65	1,2	0,68					
0,70	1,3	0,72					
0,75		0,68					
0,80	1,4	0,92					
0,85		0,88					
0,90	1,6	1,01					
0,95		0,96					
1,00	1,8	1,19					
1,05		1,15					
1,10		1,11					
1,15		1,06					
1,20	2,0	1,19					
1,25		1,15					
1,30		1,11					
1,35		1,06					
1,40	2,2	1,19					
1,45		1,15					
1,50		1,11					
1,55		1,06					
1,60	2,5	1,28	0,4+0,3				
1,65		1,24					
1,70		1,19					
1,75		1,15					
1,80	2,8	1,37					
1,85		1,32					
1,90		1,28					
1,95		1,24					
2,00	3,0	1,37					
2,05		1,32					
2,10	3,2	1,45					
2,15		1,41					
2,20		1,37					
2,25		1,32					

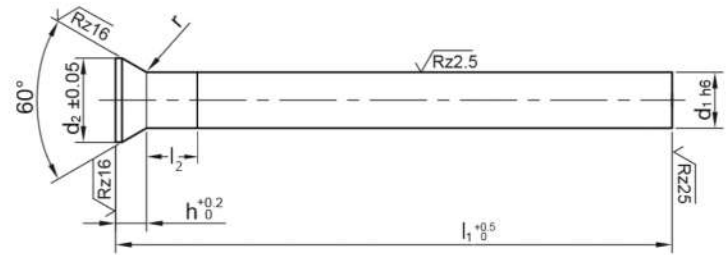
d ₁	d ₂	h	r	l ₁			
				71	80	100	120
2,30	3,5	1,54	0,4 +0,3				
2,35		1,50					
2,40		1,45					
2,45		1,41					
2,50		1,37					
2,55		1,32					
2,60	4,0	1,71					
2,65		1,67					
2,70		1,63					
2,75		1,58					
2,80		1,54					
2,85		1,50					
2,90	4,5	1,45					
2,95		1,41					
3,00		1,80					
3,05		1,76					
3,10		1,71					
3,15		1,67					
3,20	5,0	1,63					
3,25		1,58					
3,30		1,54					
3,35		1,50					
3,40		1,45					
3,45		1,41					
3,50	5,5	1,80	0,6 +0,4				
3,55		1,76					
3,60		1,71					
3,65		1,67					
3,70		1,63					
3,75		1,58					
3,80	1,54						
3,85	1,50						
3,90	1,45						
3,95	1,41						
4,00	5,5	1,80					
4,05		1,76					
4,10		1,71					
4,15		1,67					
4,20		1,63					
4,25		1,58					

Precision Piercing Punch

d ₁	d ₂	h	r	l ₁				
				71	80	100	120	130
4,30	5,5	1,54	0,6 +0,4					
4,35		1,50						
4,40		1,45						
4,45		1,41						
4,50	6,0	1,80						
4,55		1,76						
4,60		1,71						
4,65		1,67						
4,70		1,63						
4,75		1,58						
4,80		1,54						
4,85	1,50							
4,90	1,45							
4,95	1,41							
5,00	6,5	1,80						
5,05		1,76						
5,10		1,71						
5,15		1,67						
5,20		1,63						
5,30		1,54						
5,40		1,45						
5,45	1,41							
5,50	7,0	1,80						
5,60		1,71						
5,70		1,63						
5,75		1,58						
5,80		1,54						
5,90	1,45							
6,00	8,0	2,23	1,0 +0,5					
6,05		2,19						
6,10		2,15						
6,20		2,06						
6,30		1,97						
6,40		1,89						
6,50	9,0	3,17						
6,60		3,08						
6,70		2,99						
6,80		2,91						
6,90		2,82						
7,00		2,73						
7,10		2,65						
7,20	2,56							
7,25	2,52							
7,30	2,47							
7,40	2,39							
7,50	10	3,17						
7,60		3,08						
7,70		2,99						
7,80		2,91						
7,90		2,82						
8,00		2,73						
8,10		2,65						
8,20	2,56							
8,30	2,47							
8,40	2,39							
8,50	11	3,17						
8,60		3,08						
8,70		2,99						

d ₁	d ₂	h	r	l ₁					
				71	80	100	120	130	
8,80	11	2,91	1,0 +0,5						
8,90		2,82							
9,00		2,73							
9,05		2,69							
9,10		2,65							
9,20		2,56							
9,30		2,47							
9,40		2,39							
9,50		12		3,17					
9,60				3,08					
9,70	2,99								
9,80	2,91								
9,90	2,82								
10,00	2,73								
10,10	2,65								
10,20	2,56								
10,30	2,47								
10,40	2,39								
10,50	13	3,17							
10,60		3,08							
10,70		2,99							
10,80		2,91							
10,90		2,82							
11,00		2,73							
11,10		2,65							
11,20	2,56								
11,30	2,47								
11,40	2,39								
11,50	14	3,17							
11,60		3,08							
11,70		2,99							
11,80		2,91							
11,90		2,82							
12,00		2,73							
12,10		2,65							
12,20	2,56								
12,30	2,47								
12,40	2,39								
12,50	15	3,17							
12,60		3,08							
12,70		2,99							
12,80		2,91							
12,90		2,82							
13,00		2,73							
13,50		16	3,67						
14,00	17	3,23	1,5 +0,5						
14,50	3,67								
15,00	3,23								
15,50	18	3,67							
16,00	19	3,23							
16,50	3,67								
17,00	3,23								
17,50	20	3,67							
18,00	3,23								
18,50	21	3,67							
19,00	22	3,23							
19,50	3,67								
20,00	3,23								

Precision Piercing Punch



Material	Hardness HRC	
	Shaft	Head
WS	60~64	40~50
M2	62~66	45~55

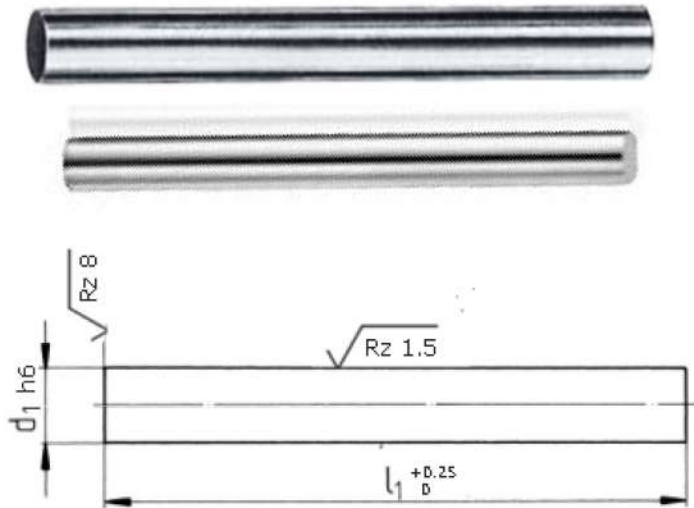
Other sizes available on request

d ₁	d ₂	d ₃	h	l ₂ max	r	l ₁			
						71	80	100	
0,5	0,9	d1+0,02	0,55	5	0,2 +0,2				
0,6	1,1		0,63						
0,7	1,3		0,72						
0,8	1,4		0,92						
0,85			0,88						
0,9	1,6		1,01						
1,0	1,8	d1+0,03	1,19		0,4 +0,3	0,6 +0,4			
1,1			1,11						
1,2	2,0		1,19						
1,3			1,11						
1,4	2,2		1,19						
1,5			1,11						
1,6	2,5		1,28						
1,7			1,19						
1,8	2,8		1,37						
1,9			1,28						
2,0	3,0		1,37						
2,1	3,2		1,45						
2,2			1,37						
2,3	3,5		1,54						
2,4			1,45						
2,5	4,0		1,37						
2,6			1,71						
2,7	4,5		1,63						
2,8		1,54							
2,9	4,5	1,45							
3,0		1,80							
3,1	4,5	1,71							
3,2		1,63							
3,3		1,54							
3,4		1,45							

Precision Piercing Punch

d ₁	d ₂	d ₃	h	l ₂ max	r	l ₁				
						71	80	100		
3,5	5,0	d1+0,03	1,80	5	0,6 +0,4					
3,55										
3,6										
3,65										
3,7										
3,75										
3,8										
3,85										
3,9										
4,0			5,5				1,80			
4,1				1,71						
4,2				1,63						
4,25				1,58						
4,3				1,54						
4,4				1,45						
4,5	6,0			1,80		6				
4,6				1,71						
4,7				1,63						
4,8				1,54						
4,9				1,45						
5,0	6,5		1,80							
5,1			1,71							
5,2			1,63							
5,3			1,54							
5,5		7,0		1,80						
5,6	8,0		1,71	5						
6,0			2,23							
6,1			2,15							
6,4			1,89							
6,5		9,0			3,17	8				
6,7					2,99					
7,0					2,73					
7,3					2,47					
7,4					2,39					
7,5		10			3,17					
7,6			3,08							
7,7			2,99							
8,0			2,73							
8,4			2,39							
8,5	11			3,17	10					
8,75			2,95							
8,8			2,91							
9,0			2,73							
9,25			2,52							
9,3			2,47							
9,4			2,39							
9,7	12		2,99							
9,9			2,82							
10,0			2,73							
10,5		13		3,17						
10,6				3,08						
11,0			2,73							
11,6	14		3,08	10						
11,8			2,91							
12,0			2,73							
12,1			2,65							
12,3			2,47							
12,5		15			3,17					
14,0	16									
16,0	18		3,23		12	1,5+0,5				

Headless Piercing Punch

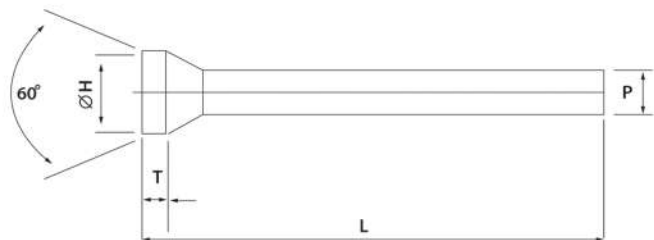


Material	Hardness HRC
	Shaft
M2	62~66

Other materials on request

d_1	in steps of mm	l_1
0.5 - 0.95	0.05	Preferred length $l_1=71$ $l_1=60, 80, 90$ and 100 are available on request.
1.0 - 6.0	0.1	
6.5 - 12.0	0.5	

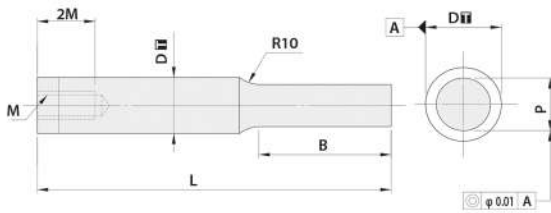
HSS Tapered Head Punches



Tolerance	
H	0, -0.2
L	+/-0.5
P	0, -0.02
T	+/-0.3

HEAD DIA "H" (mm)	BODY DIA "P" (0.1 mm increments) min. "P" max.	OVERALL LEN "L" (mm)				HEAD LEN "T" (mm)	
		50	70	75	80	100	0.5
4.5	3.0~3.5	50	70	75			0.5
5	3.5~4.0	50	70	75			0.5
5.5	4.0~4.5	50	70	75	80	100	0.5
6	4.5~5.0	50	70	75	80	100	0.5
6.5	5.0~5.5	50	70	75	80	100	0.5
7	5.5~6.0	50	70	75	80	100	0.5
8	6.0~6.5	50	70	75	80	100	0.5
9	6.5~7.0	50	70	75	80	100	1
10	7.0~8.0	50	70	75	80	100	1
11	8.0~9.0		70	75	80	100	1
12	9.0~10.0		70	75	80	100	1
13	10.0~11.0		70	75	80	100	1
14	11.0~12.0		70	75	80	100	1

HSS Tapped Punches



Tolerance

D 0, -0.02

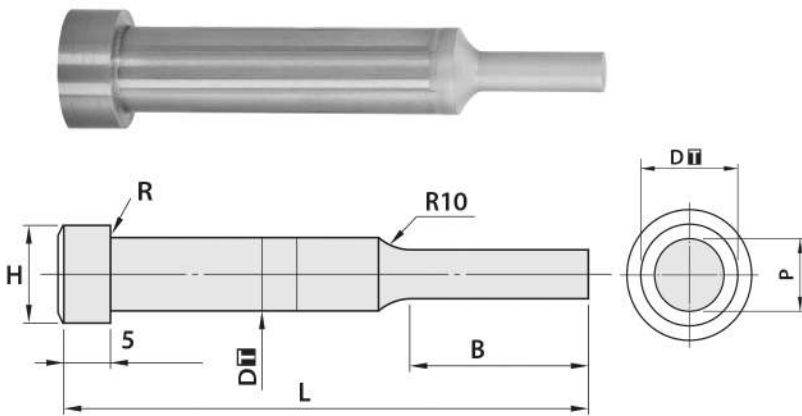
L +/-0.5

P 0, -0.02

B 0, +0.5

BODY DIA "D" (mm)	TIP LENGTH "B" (mm)	TAP SIZE "M" (mm)	OVERALL LENGTH "L" (mm)				TIP DIA "P" (0.1 mm increments) min. "P" max.
			50	70	80	100	
5	8	3	50	70	80	100	2.0~4.9
6	8	3	50	70	80	100	2.0~5.9
8	13	4	50	70	80	100	3.0~7.9
10	13	5	50	70	80	100	3.0~9.9
13	13	6		70	80	100	6.0~12.9
16	19	6		70	80	100	10.0~15.9
20	19	6		70	80	100	13.0~19.9
25	19	6		70	80	100	18.0~24.9
5	13	3	50	70	80	100	2.0~4.9
6	13	3	50	70	80	100	2.0~5.9
8	19	4	50	70	80	100	3.0~7.9
10	19	5	50	70	80	100	3.0~9.9
13	19	6		70	80	100	6.0~12.9
16	25	6		70	80	100	10.0~15.9
20	25	6		70	80	100	13.0~19.9
25	25	6		70	80	100	18.0~24.9
5	25	3		70	80	100	2.0~4.9
6	25	3		70	80	100	2.0~5.9
8	30	4		70	80	100	3.0~7.9
10	30	5		70	80	100	3.0~9.9
13	30	6		70	80	100	6.0~12.9
16	40	6		70	80	100	10.0~15.9
20	40	6		70	80	100	13.0~19.9
25	40	6		70	80	100	18.0~24.9

HSS Shoulder Punches



Tolerance

H 0, -0.2

L +/-0.5

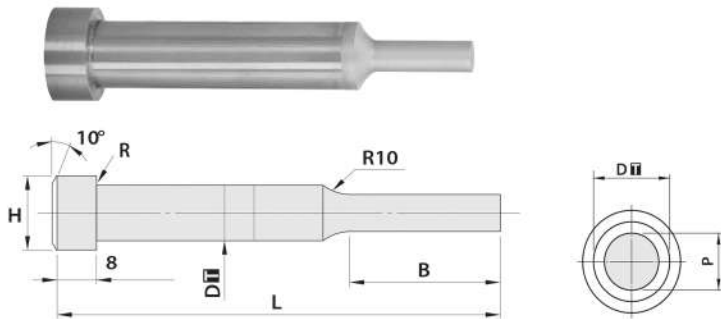
P 0, -0.02

D 0, -0.05

B 0, +0.5

HEAD DIA "H" (mm)	BODY DIA "D" (mm)	BODY LEN "B" (mm)	OVERALL LEN "L" (mm)				TIP DIA "P" (0.1 mm increments) min. "P" max.
6	4	8	50	70	80	100	2.0~3.9
7	5	8	50	70	80	100	2.0~4.9
8	6	8	50	70	80	100	2.0~5.9
10	8	13	50	70	80	100	3.0~7.9
12	10	13	50	70	80	100	3.0~9.9
15	13	13	50	70	80	100	6.0~12.9
18	16	19	70	80	100		10.0~15.9
22	20	19	70	80	100		13.0~19.9
27	25	19	50	70	80		18.0~24.9
6	4	13	50	70	80	100	2.0~3.9
7	5	13	50	70	80	100	2.0~4.9
8	6	13	50	70	80	100	2.0~5.9
10	8	19	50	70	80	100	3.0~7.9
12	10	19	50	70	80	100	3.0~9.9
15	13	19	50	70	80	100	6.0~12.9
18	16	25	70	80	100		10.0~15.9
22	20	25	70	80	100		13.0~19.9
27	25	25	70	80	100		18.0~24.9
18	16	40	70	80	100		10.0~15.9
22	20	40	70	80	100		13.0~19.9
27	25	40	70	80	100		18.0~24.9

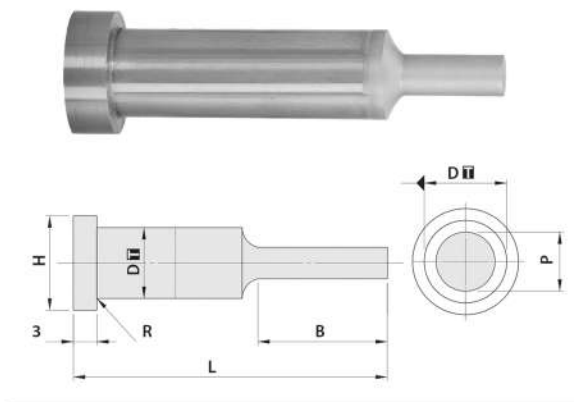
HSS Shoulder Punches for Heavy Load



Tolerance	
H	0, -0.2
L	+/-0.5
P	0, -0.02
D	0, -0.05
B	0, +0.5

HEAD DIA "H" (mm)	BODY DIA "D" (mm)	BODY LEN "B" (mm)	OVERALL LEN "L" (mm)				TIP DIA "P" (0.1 mm increments) min. "P" max.	
			50	70	80	100		
10	5	8	50	70	80	100	2.00~4.9	
11	6	8	50	70	80	100	2.00~5.9	
13	8	13		70	80	100	120	3.00~7.9
15	10	13		70	80	100	120	3.00~9.9
18	13	13		70	80	100	120	6.00~12.9
21	16	19		70	80	100	120	10.00~15.9
25	20	19		70	80	100	120	13.00~19.9
30	25	19		70	80	100	120	18.00~24.9
10	5	13		70	80	100		2.00~4.9
11	6	13		70	80	100		2.00~5.9
13	8	19		70	80	100	120	3.00~7.9
15	10	19		70	80	100	120	3.00~9.9
18	13	19		70	80	100	120	6.00~12.9
21	16	25		70	80	100	120	10.00~15.9
25	20	25		70	80	100	120	13.00~19.9
30	25	25		70	80	100	120	18.00~24.9

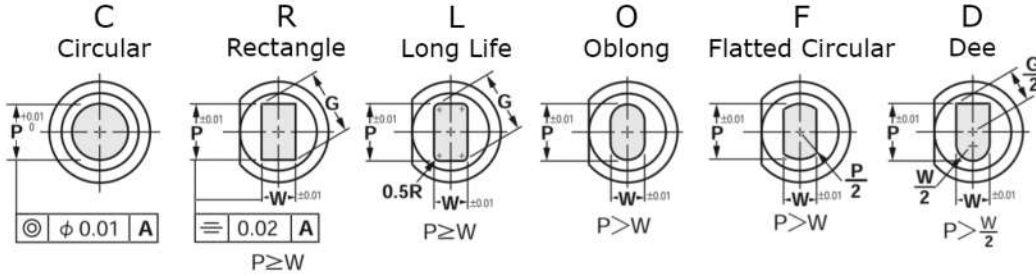
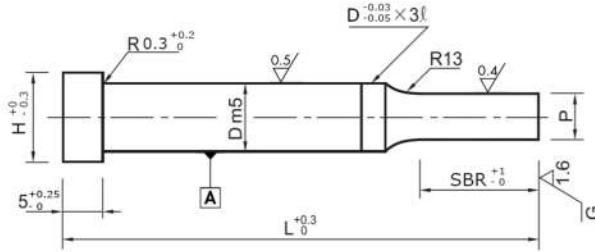
HSS Shoulder Punches Short Type



Tolerance	
H	0, -0.2
L	+/-0.5
P	0, -0.02
D	0, -0.05
B	0, +0.5

HEAD DIA "H" (mm)	BODY DIA "D" (mm)	TIP LEN "B" (mm)	OVERALL LEN "L" (mm)				TIP DIA "P" (0.1 mm increments) min. "P" max.
			25	30	35	40	
7	4	8	25	30	35	40	2.0~3.9
8	5	8	25	30	35	40	2.0~4.9
9	6	8	25	30	35	40	2.50~5.9
11	8	8	25	30	35	40	5.0~7.9
13	10	8	25	30	35	40	7.0~9.9
7	4	13		30	35	40	2.0~3.9
8	5	13		30	35	40	2.0~4.9
9	6	13		30	35	40	2.50~5.9
11	8	13		30	35	40	5.0~7.9
13	10	13		30	35	40	7.0~9.9

Standard Punch

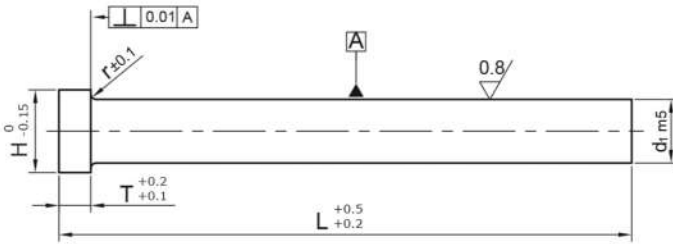


Material	Hardness HRC	
	Shaft	Head
D2	60~62	45~55
M2	61~63	
ASP	63~65	
WC	Available on request	

Coatings available for M2 and ASP only

D	C		R L O F D		L Length		SBR		H		
	P min	P max	P.W min	P.G max	min	max	min	max			
4	1.00	3.97	1.60	3.97	40	80	8	19	D + 3		
5	1.60	4.97		4.97				25			
6		5.97		5.97				25			
8	2.50	7.97	2.50	7.97	50	100	13	30			
10	3.00	9.97		9.97				30			
13	5.00	12.97		12.97				30			
16	8.00	15.97	4.00	15.97			63	100		19	40
20	10.00	19.97	5.00	19.97							
25	12.00	24.97	6.00	24.97							
32	16.00	31.97	8.00	31.97	63	100	25	40			
38	20.00	37.97		37.97							
40		39.97		39.97							
45	25.00	44.97	9.00	44.97							
50	30.00	49.97	10.00	49.97							
56	35.00	55.97	11.00	55.97							
63	40.00	62.97	12.00	62.97							

Standard Punch Blanks



Material	Hardness HRC	
	Shaft	Head
D2	58~62	40~50
M2	60~64	47~57
ASP		
CPM		

Head thickness 3

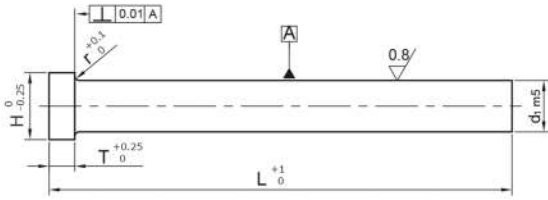
Other sizes available on request

d_1	H	T	r	L						
				63	71	80	90	100	120	130
1,5	3	3	0,2							
2,0	5									
2,5										
3,0										
3,5				6						
4,0										
4,5	7									

Head thickness 5

d_1	H	T	r	L						
				63	71	80	90	100	120	130
1,5	3	5	0,2							
2,0	5									
2,5										
3,0										
3,5				6						
4,0										
4,5	7									
5,0	8									
5,5	9									
6,0										
6,5			11	0,3						
7,0	10									
8,0	11									
10,0	13									
11,0	14		0,4							
13,0	16									
16,0	19									
20,0	23									
25,0	28									
32,0	35									

Carbide Punch Blanks



Material	Hardness HRC
WC	~

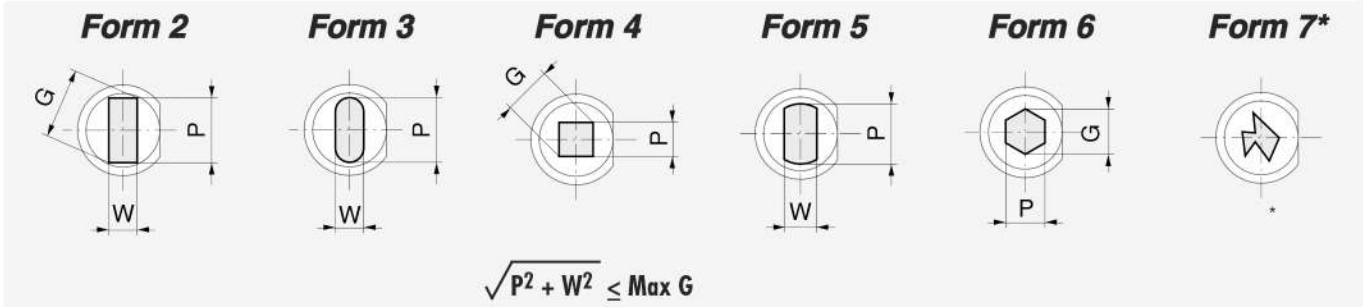
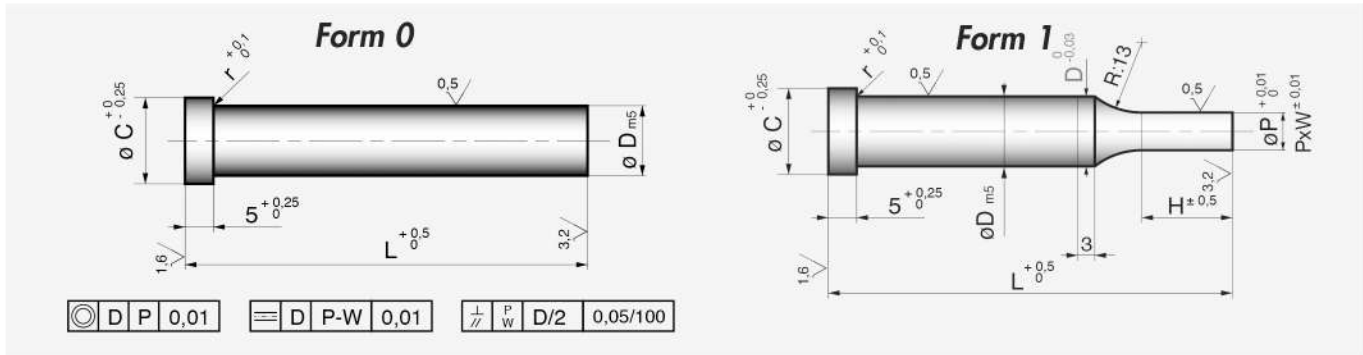


Other sizes available on request

d ₁	H	T	r	L
1,0	2,0	5	0,3	71
1,1	2,2			
1,2	2,5			
1,3	3,0			
1,4	3,2			
1,5	3,5			
1,6	3,7			
1,7	4,0			
1,8	4,5			
1,9	5,0			
2,0				
2,1				
2,2				
2,3				
2,4				
2,5				
2,6				
2,7				
2,8				
2,9				
3,0				
3,1				
3,2				
3,3				
3,4				

d ₁	H	T	r	L
3,5	5,5	5	0,3	71
3,6				
3,7				
3,8				
3,9				
4,0	6,0			
4,1				
4,2				
4,3				
4,4	7,0			
4,5				
4,6				
4,7				
4,8				
4,9				
5,0				
5,5	8,0			
6,0	8,5			
6,5	9,0			
7,0	9,5			
7,5	10			
8,0	10,5			
9,0	11,0			
10,0	12,0			
	13,0			

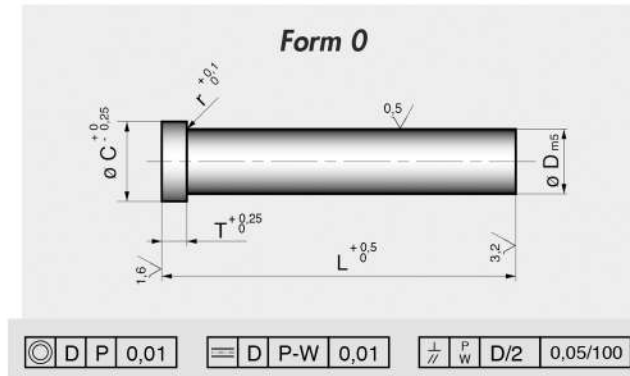
P - Cylindrical Head Punches



D	L					Form 1 Std. Range P	Min. P	Max. P/G	Min. W	Std. H (•) / Alt.H(x)					C	r
	71	80	90	100	120					10	13	16	20	25		
5	•	•	•	•	•	3 - 4,95	1,6	4,95	2	•	x				8	0,25
6	•	•	•	•	•	3,5 - 5,95	1,6	5,95	2	•	x				9	0,25
8	•	•	•	•	•	5 - 7,95	2,5	7,95	3	•	•	x			11	0,25
10	•	•	•	•	•	5,5 - 9,95	3,2	9,95	4	•	•	x			13	0,25
13	•	•	•	•	•	6 - 12,95	5	12,95	5	•	•	•	x		16	0,4
16	•	•	•	•	•	8 - 15,95	6	15,95	6	•	•	•	•	x	19	0,4
20	•	•	•	•	•	10 - 19,95	8	19,95	8	•	•	•	•	x	24	0,4
25	•	•	•	•	•	12 - 24,95	11	24,95	11	•	•	•	•	x	29	0,4
32	•	•	•	•	•	16 - 31,95	16	31,95	16	•	•	•	•	x	36	0,4

P - Cylindrical Head Punches

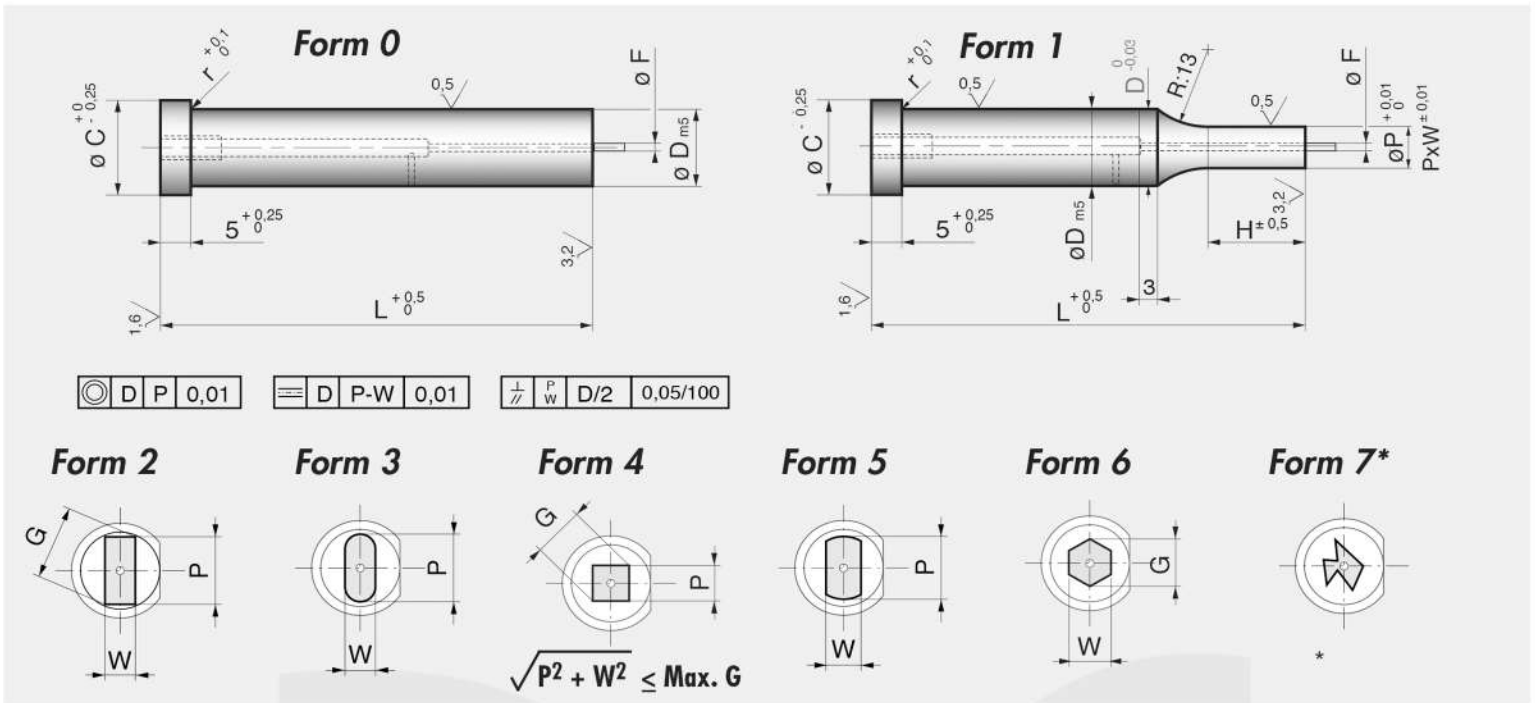
Intermediate Shank Diameters



D_{m5}	L			C	T	r
	71	80	100			
2	•	•	•	3,5	3	0,25
2,5			•	4	3	0,25
3	•	•	•	5	3	0,25
3,2			•	5	3	0,25
4	•	•	•	6	3	0,25
6,3			•	9	5	0,25
7			•	10	5	0,25
8,1 → 8,4			•	11	5	0,25
8,5 → 8,9			•	11,5	5	0,25
9			•	12	5	0,25
9,1 → 9,4			•	12	5	0,25
9,5 → 9,9			•	12,5	5	0,25
10,1 → 10,4			•	13	5	0,4
10,5			•	13,5	5	0,4
10,6 → 10,9			•	13,5	5	0,4
11			•	14	5	0,4
11,1 → 11,4			•	14	5	0,4
11,5			•	14,5	5	0,4

D_{m5}	L			C	T	r
	71	80	100			
11,6 → 11,9			•	14,5	5	0,4
12			•	15	5	0,4
12,1 → 12,4			•	15,5	5	0,4
12,5			•	15,5	5	0,4
12,6 → 12,9			•	15,5	5	0,4
13,5			•	16,5	5	0,4
14			•	17	5	0,4
14,5			•	17,5	5	0,4
15			•	18	5	0,4
15,5			•	18,5	5	0,4
17			•	21	5	0,4
18			•	22	5	0,4
19			•	23	5	0,4
22			•	26	5	0,4
24				28	5	0,4
26				30	5	0,4
28				32	5	0,4
30				34	5	0,4

Q - Cylindrical Head Punches (Ejector Style)

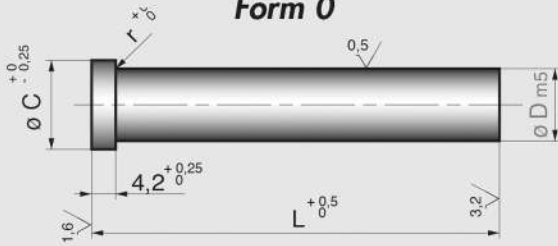


D	L					Form 1 Std. Range P	Min. P	Max. P/G	Min. W	Std. H (•) / Alt.H(x)					C	r
	71	80	90	100	120					10	13	16	20	25		
5	•	•	•	•		3 - 4,95	1,6	4,95	2	•	x				8	0,25
6	•	•	•	•		3,5 - 5,95	1,6	5,95	2	•	x				9	0,25
8	•	•	•	•	•	5 - 7,95	2,5	7,95	3	•	•	x			11	0,25
10	•	•	•	•	•	5,5 - 9,95	3,2	9,95	4	•	•	x			13	0,25
13	•	•	•	•	•	6 - 12,95	5	12,95	5	•	•	•	x		16	0,4
16	•	•	•	•	•	8 - 15,95	6	15,95	6	•	•	•	•	x	19	0,4
20	•	•	•	•	•	10 - 19,95	8	19,95	8	•	•	•	•	x	24	0,4
25	•	•	•	•	•	12 - 24,95	11	24,95	11	•	•	•	•	x	29	0,4
32	•	•	•	•		16 - 31,95	16	31,95	16	•	•	•	•	x	36	0,4

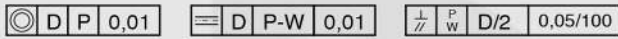
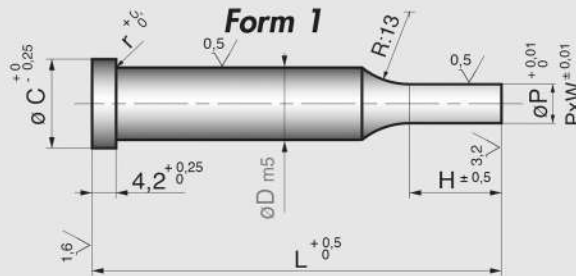
R/S Cylindrical Head Punches

tol: m^5 / h^6

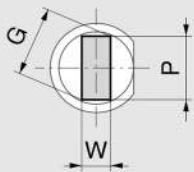
TYPE R Tolerance D = m5
Form 0



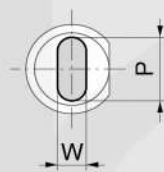
Form 1



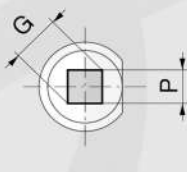
Form 2



Form 3

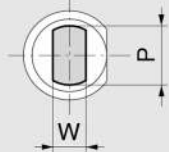


Form 4

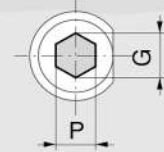


$$\sqrt{P^2 + W^2} \leq \text{Max } G$$

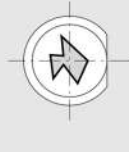
Form 5



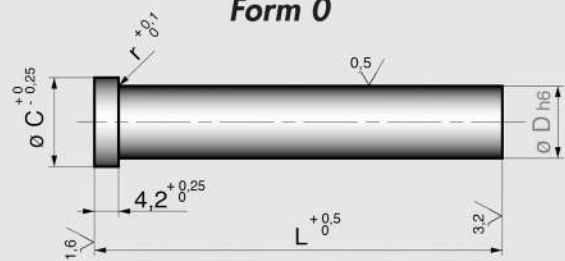
Form 6



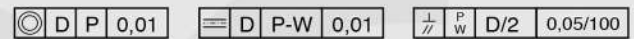
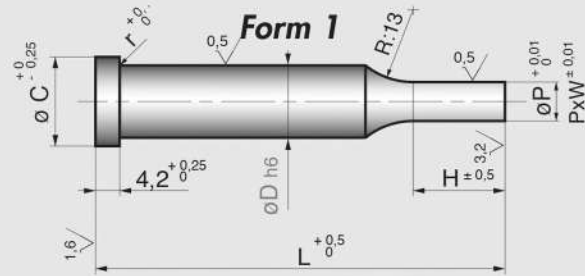
Form 7*



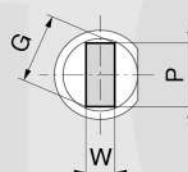
TYPE S Tolerance D = h6
Form 0



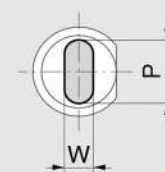
Form 1



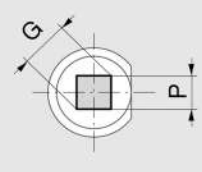
Form 2



Form 3

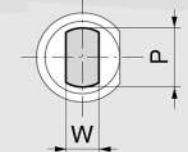


Form 4

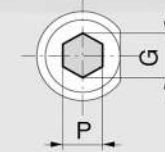


$$\sqrt{P^2 + W^2} \leq \text{Max } G$$

Form 5



Form 6



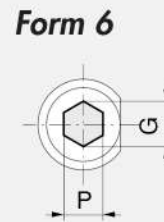
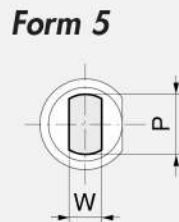
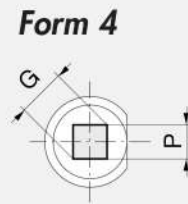
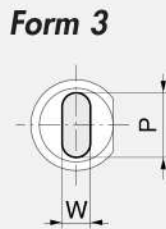
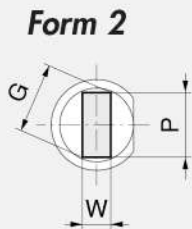
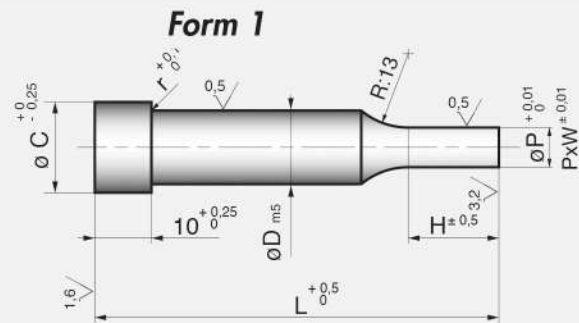
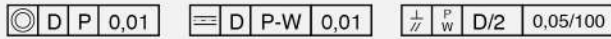
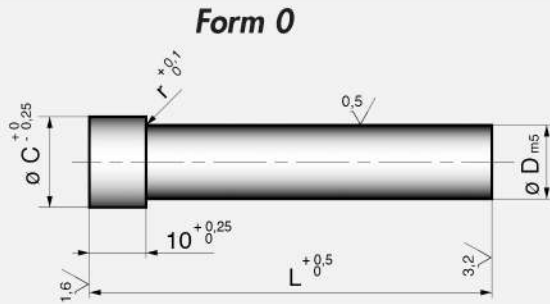
Form 7*



D	L				Form 1 Range P	Max.P/G	Mini. W	H	C	r
	71	80	100	120						
0,5									1	
0,6 / 0,7									1,3	
0,8 / 0,9									1,5	
1	•	•	•						2	
1,01 → 1,20			•						2,2	
1,21 → 1,40			•						2,5	
1,41 → 1,49			•						3	
1,5	•	•	•						3	
1,51 → 1,70			•						3	
1,71 → 1,90			•						3,2	
1,91 → 1,99			•						3,5	
2	•	•	•	•	0,5 - 1,99	1,99	0,8	7	3,5	
2,1 / 2,2			•						3,7	
2,3 / 2,4			•						4	
2,5			•						4	
2,6 → 2,9			•						4,5	
3	•	•	•	•	1,6 - 2,99	2,99	1,3	7	5	0,25
3,1 → 3,4			•						5	
3,5	•	•	•						5,5	
3,6 → 3,9			•						5,5	
4	•	•	•	•	1,6 - 3,99	3,99	1,5	10	6,5	
4,1 → 4,4			•						6,5	
4,5	•	•	•						7	
4,6 → 4,9			•						7	
5	•	•	•	•	1,6 - 4,99	4,99	2	10	8	
5,1 → 5,4			•						8	
5,5 → 5,9			•						8,5	
6	•	•	•	•	1,6 - 5,99	5,99	2	10	9	
6,1 → 6,4			•						9	
6,5 → 6,9			•						9,5	
7			•						10	
7,1 → 7,4			•						10	
7,5 → 7,9			•						10,5	

U - Cylindrical Head Punches

reinforced head

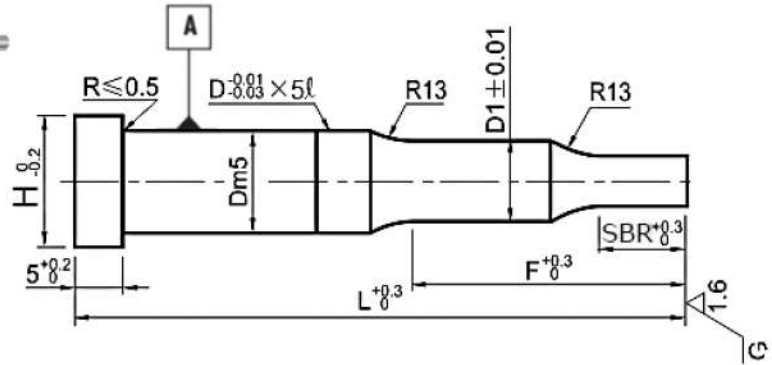


* see page 20

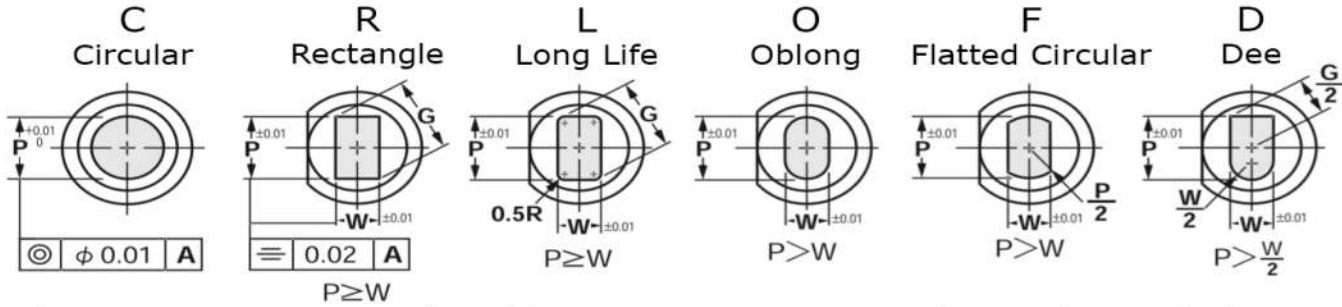
$$\sqrt{P^2 + W^2} \leq \text{Max } G$$

D	L				Form 1 Std. Range P	Min. P	Max. P/G	Min. W	Std. H	C	r
	71	80	100	120							
5					3 - 4,95	1,6	4,95	1,6	10	8	0,25
6					3,5 - 5,95	1,6	5,95	1,6	10	9	0,25
8				●	5 - 7,95	2,5	7,95	2,5	13	11	0,25
10				●	5,5 - 9,95	3,2	9,95	3,2	13	13	0,25
13				●	6 - 12,95	5	12,95	5	16	16	0,4
16				●	8 - 15,95	8	15,95	6	18	19	0,4
20				●	10 - 19,95	10	19,95	8	20	24	0,4
22				●	12 - 21,95	12	21,95	10	20	26	0,4
25				●	12 - 24,95	12	24,95	11	20	29	0,4

Headed Stepped Punch



Material	Hardness HRC
D2	60~62
M2	60~63
ASP	63~65

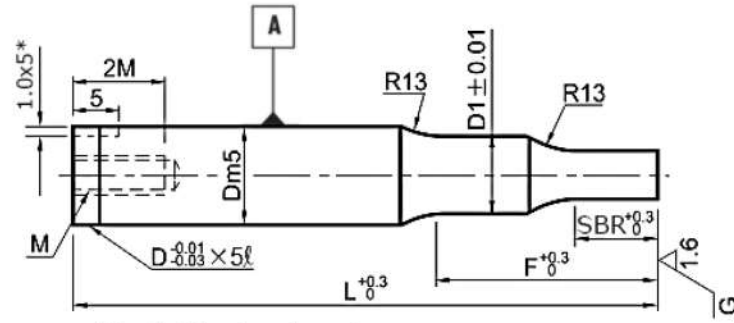


D	C				G max	R L O F D				D1	F	H	Length	
	P min	P max	SBR min	SBR max		P.W min	P.G max	SBR min	SBR max				min	max
3	0.50	0.99	2.0	10.0	2.96	0.70	1.49	2.0	8.0	Shape C D > D1 > P +0.01 Shapes RLOFD D > D1 > P, W +0.03	Shape C F ≤ L - 25 Shapes RLOFD F ≤ L - 30 SBR + 2 < F ≤ Fmax	5	80	
	1.00	1.99		20.0		1.50	1.99		13.0					
	2.00	2.99		35.0		2.00	2.96		19.0					
4	0.50	0.99		10.0	3.96	0.80	1.49		8.0					
	1.00	1.99		20.0		1.50	1.99		13.0					
	2.00	3.98		35.0		2.00	3.49		19.0					
5	1.00	1.99		20.0	4.96	0.80	1.49		8.0					
	2.00	3.99		35.0		1.50	1.99		13.0					
	4.00	4.98		45.0		2.00	3.49		25.0					
6	1.00	1.99		20.0	5.96	0.80	1.49		8.0					
	2.00	3.99		35.0		1.50	1.99		13.0					
	4.00	5.98		45.0		2.00	3.49		19.0					
8	1.00	1.99	20.0	7.96	1.00	1.49	8.0							
	2.00	3.99	35.0		1.50	1.99	13.0							
	4.00	5.99	45.0		2.00	3.49	19.0							
10	1.50	1.99	20.0	9.96	1.25	1.49	8.0							
	2.00	3.99	35.0		1.50	1.99	13.0							
	4.00	5.99	45.0		2.00	3.49	19.0							
13	3.00	3.99	35.0	12.96	1.50	1.99	13.0							
	4.00	5.99	45.0		2.00	3.49	19.0							
	6.00	12.98	60.0		3.50	4.99	25.0							
16	5.00	5.99	45.0	15.96	2.00	3.49	19.0							
	6.00	15.98	60.0		3.50	4.99	25.0							
					5.00	15.96	30.0							
20	6.50	19.98	60.0	19.96	2.50	3.49	19.0							
					3.50	4.99	25.0							
					5.00	19.96	30.0							
25	9.00	24.98	60.0	24.96	3.00	3.49	19.0							
					3.50	4.99	25.0							
					5.00	24.96	30.0							

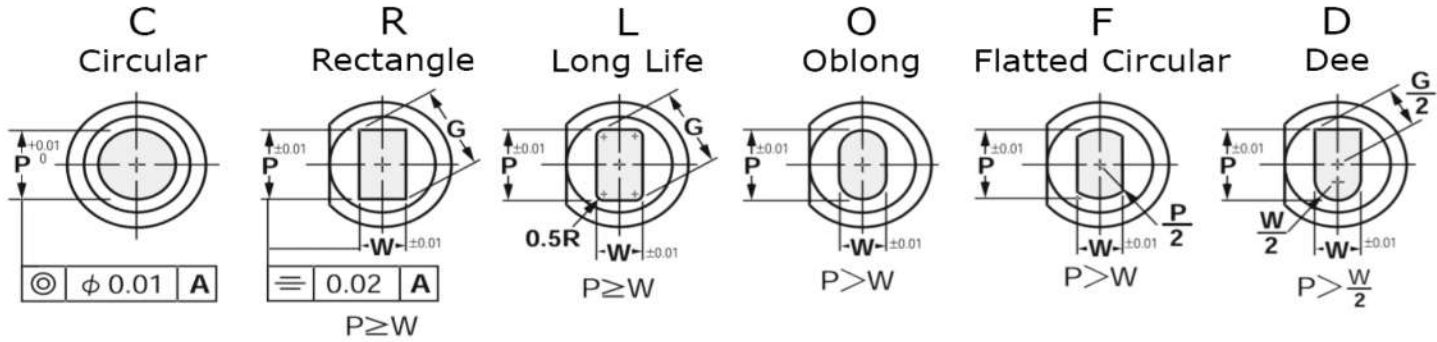
Headless Stepped Punch



Material	Hardness HRC
D2	58~62
M2	61~63
ASP	63~65



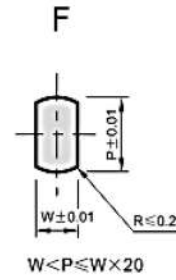
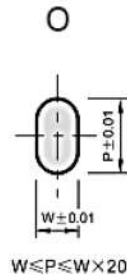
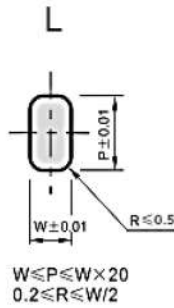
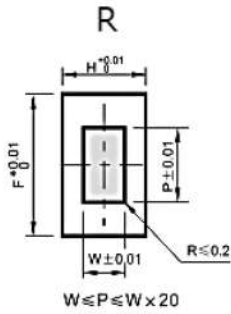
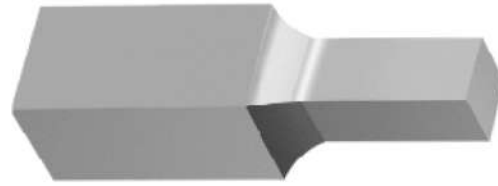
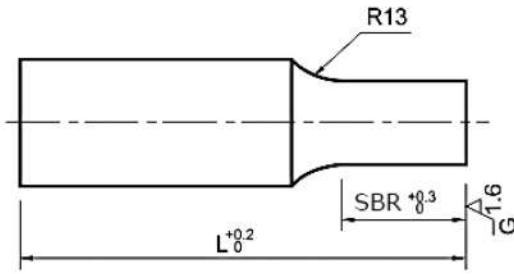
*Key flat for shaped punches



D	C				G max	R L O F D				L Length		D1	F	M		
	P min	P max	SBR min	SBR max		P.W min	P.G max	SBR min	SBR max	min	max					
5	1.00	1.99	2.0	20.0	4.96	0.80	1.49	2.0	8.0	40	Shape C D>D1>P +0.01 Shapes RLOFD D>D1>P,W +0.03	F<L-30 SBR+2<F<Fmax				
	2.00	3.99		35.0		1.50	1.99		13.0							
	4.00	4.98		45.0		2.00	3.49		19.0							
6	1.00	1.99		20.0	5.96	1.00	1.49		8.0						80	3
	2.00	3.99		35.0		1.50	1.99		13.0							
	4.00	5.98		45.0		2.00	3.49		19.0							
				3.50		4.99	25.0									
				5.00		5.96	30.0									
8	1.00	1.99		20.0	7.96	1.00	1.49		8.0						4	
	2.00	3.99		35.0		1.50	1.99		13.0							
	4.00	5.99		45.0		2.00	3.49		19.0							
	6.00	7.98		60.0		3.50	4.99		25.0							
			5.00	7.96		30.0										
10	1.50	1.99	20.0	9.96	1.25	1.49	8.0	5								
	2.00	3.99	35.0		1.50	1.99	13.0									
	4.00	5.99	45.0		2.00	3.49	19.0									
	6.00	9.98	60.0		3.50	4.99	25.0									
			5.00		9.96	30.0										
13	3.00	3.99	35.0	12.96	1.50	1.99	13.0	100								
	4.00	5.99	45.0		2.00	3.49	19.0									
	6.00	12.98	60.0		3.50	4.99	25.0									
16	5.00	5.99	45.0	15.96	2.00	3.49	19.0	6								
	6.00	15.98	60.0		3.50	4.99	25.0									
					5.00	15.96	30.0									
2.50	3.49	19.0														
20	6.50	19.98	60.0	19.96	3.50	4.99	25.0									
					5.00	19.96	30.0									
					3.00	3.49	19.0									
25	9.00	24.98	60.0	24.96	3.50	4.99	25.0									
					5.00	24.96	30.0									
					3.00	3.49	19.0									



Block Punch

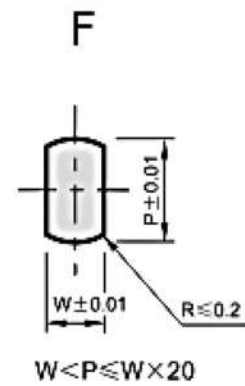
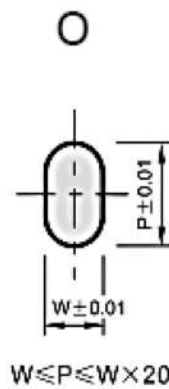
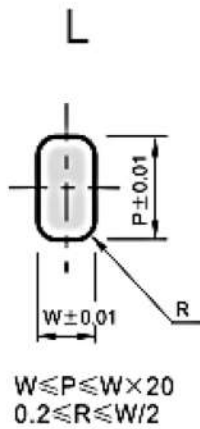
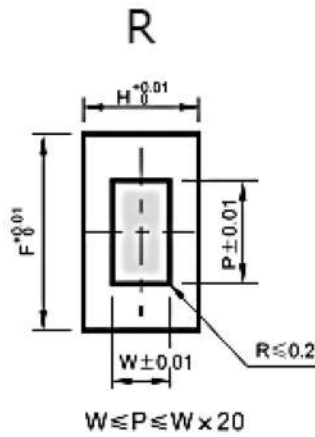
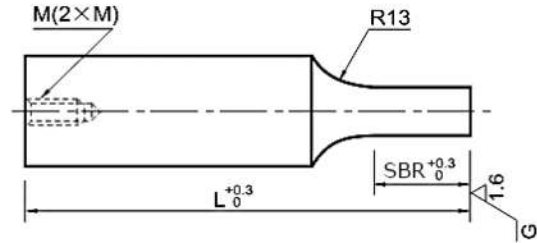
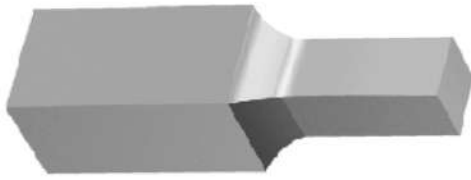


Material	Hardness HRC
D2	60~62
M2	61~63
ASP	63~65
WC	-

Coatings available for **M2** and **ASP** only

H	F P min W min	3	4	5	6	8	10	13	16	20	22	25	28	30	40	50	SBR		L		
		1.5	2.0	2.5	3.0		4.0	5.0	7.0	8.0	9.0	10.0	12.0		16.0	20.0	min	max			
3	1.0																	6	8	40-100	
4																					
5	1.2																				
6	1.5																	8	13		
8	2.0																				
10	2.5																				
13	3.0																	13	19		
16	4.0																				
20	5.0																				
22	6.0																				
25	6.5																	19	25		
28	7.0																				
30	7.5																				

Block Punch with Tapped Hole

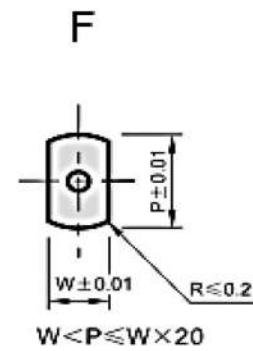
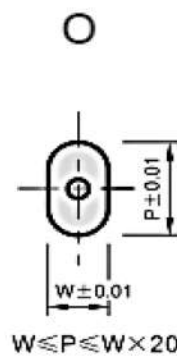
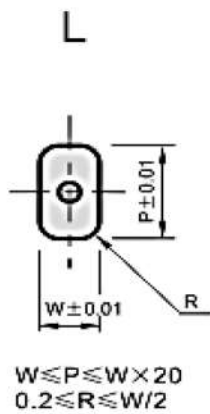
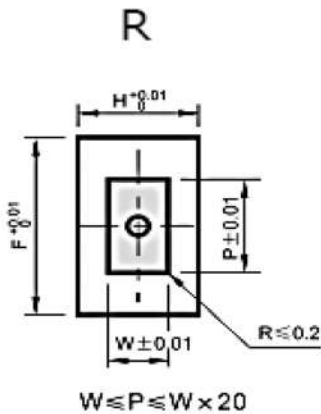
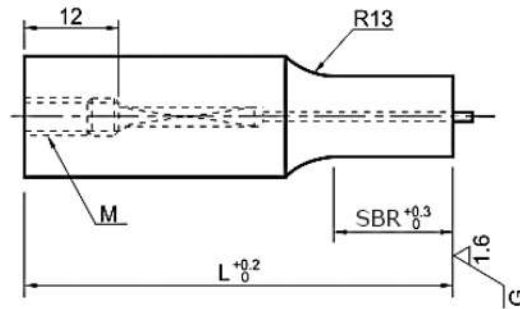
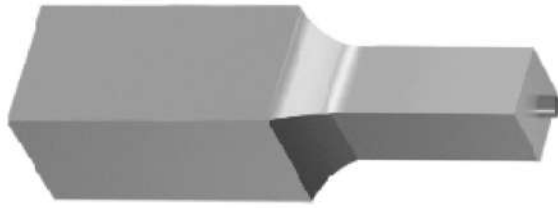


Material	Hardness HRC
D2	60~62
M2	61~63
ASP	63~65

Coatings available for **M2** and **ASP** only

H	F P min W min	5	6	8	10	13	16	20	22	25	28	30	40	50	M	SBR		L
		2.5	3.0	4.0	5.0	7.0	8.0	9.0	10.0	12.0	16.0	20.0	min	max				
5.0	1.2														M3			40-100
6.0	1.5														M4	8	13	
8.0	2.0														M5			
10.0	2.5														M6	13	19	
13.0	3.0														M8			
16.0	4.0																	
20.0	5.0																	
22.0	6.0																	
25.0	6.5																	
28.0	7.0															19	25	
30.0	7.5																	

Ejector Block Punch with Tapped Hole

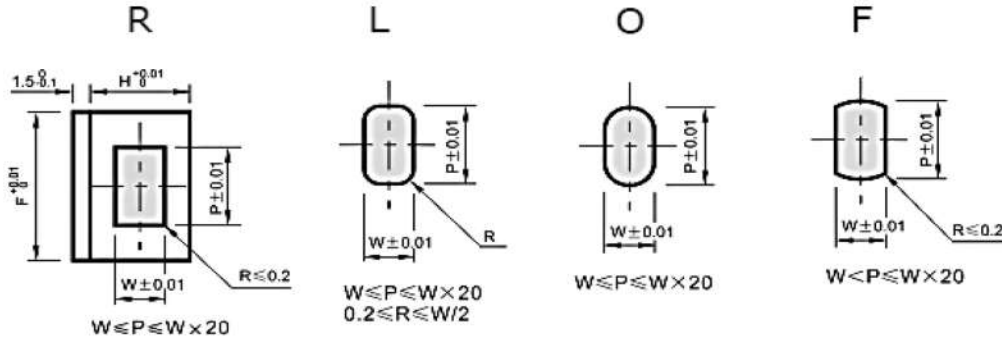
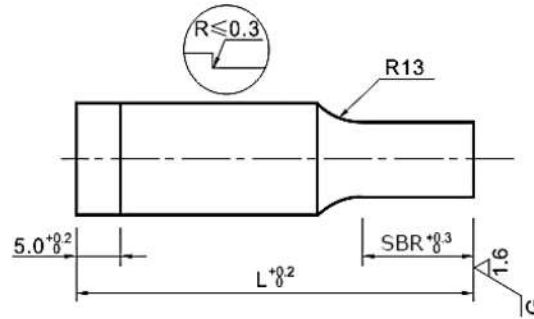
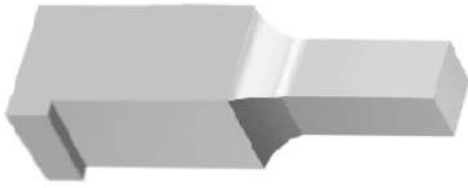


Material	Hardness HRC
D2	60~62
M2	61~63
ASP	63~65

Coatings available for **M2** and **ASP** only

H	F P min W min	6	8	10	13	16	20	22	25	28	30	M	SBR	L
		3.0	4.0	5.0	7.0	8.0	9.0	10.0	12.0					
6	2.0											M4	8	60-80
8	2.5											M5		
10	3.0											M6		
13	4.0											M8	13	
16	5.0													
20	6.0												19	
22														
25														

Block Punch with Single Flange



Material	Hardness HRC
D2	60~62
M2	61~63
ASP	63~65
WC	-

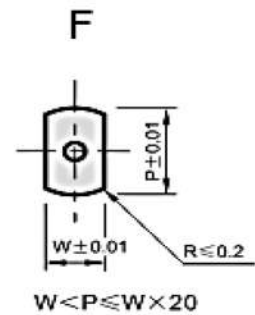
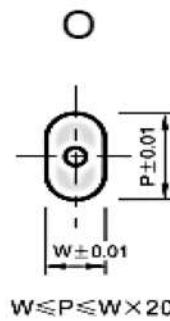
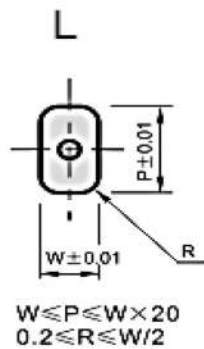
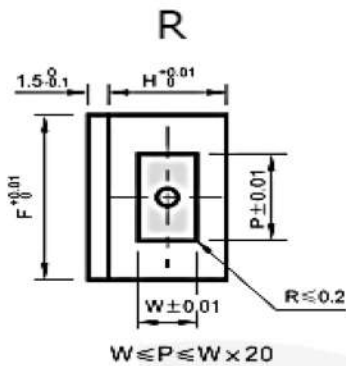
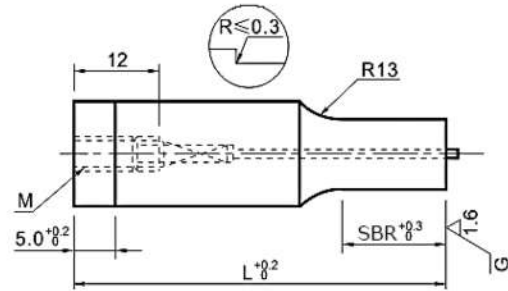
Coatings available for **M2** and **ASP** only

Other sizes available on request

H	F P min W min	2	3	4	5	6	8	10	13	16	20	22	25	28	30	40	50	SBR		L				
		1.0	1.5	2.0	2.5	3.0		4.0	5.0	7.0	8.0	9.0	10.0	12.0		16.0	20.0	min	max					
2.0	1.0																			6	8	60-100		
3.0																							8	13
4.0																								
5.0	1.2																			8	13			
6.0																								
8.0	2.0																			13	19			
10.0																								
13.0	3.0																			13	19			
16.0																								
20.0	5.0																			19	25			
22.0																								
25.0	6.5																			19	25			
28.0																								
30.0	7.5																							

Ejector Block Punch

Ejector Block Punch with Single Flange and Tapped Hole



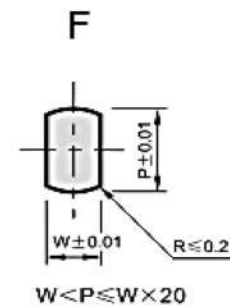
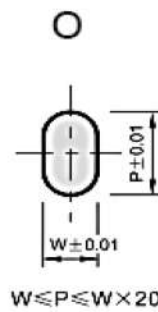
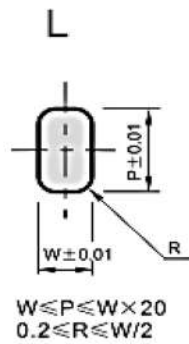
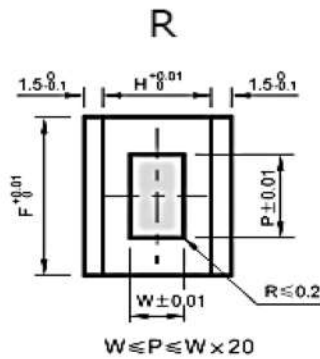
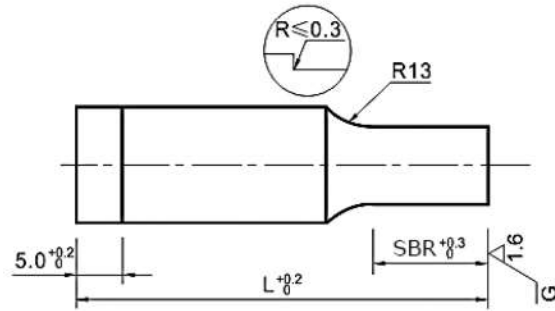
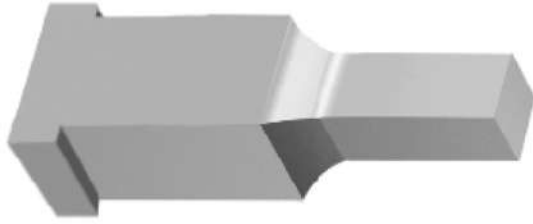
Material	Hardness HRC
D2	60~62
M2	61~63
ASP	63~65

Coatings available for **M2** and **ASP** only

Other sizes available on request

H	F P min W min	6	8	10	13	16	20	22	25	28	30	M	SBR	L
		3.0	4.0	5.0	7.0	8.0	9.0	10.0	12.0					
6	2.0											M4	8	60-80
8	2.5											M5		
10	3.0											M6		
13	4.0											M8	13	
16	5.0													
20	6.0												19	
22														
25														

Block Punch with Double Flange



Material	Hardness HRC
D2	60~62
M2	61~63
ASP	63~65
WC	-

Coatings available for **M2** and **ASP** only

Other sizes available on request

H	P min W min	F	2	3	4	5	6	8	10	13	16	20	22	25	28	30	40	50	SBR		L	
		1.0	1.5	2.0	2.5	3.0	4.0	5.0	7.0	8.0	9.0	10.0	12.0	16.0	20.0	min	max					
2.0	1.0																					60-100
3.0																				6	8	
4.0																						
5.0	1.2																					
6.0	1.5																					
8.0	2.0																					
10.0	2.5																					
13.0	3.0																					
16.0	4.0																					
20.0	5.0																					
22.0	6.0																					
25.0	6.5																					
28.0	7.0																					
30.0	7.5																					

Pin Punches (Imperial)

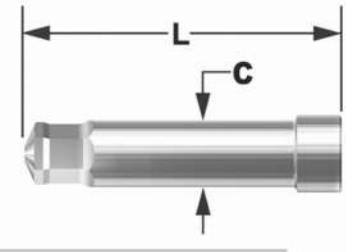
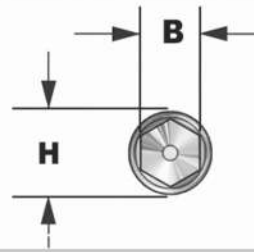
Description	OAL	Body Size	Body Type	Blade Width	Blade Style
1/16" Black Oxide Pin Punch	4	1/4	Hex	1/16	N/A
3/32" Black Oxide Pin Punch	4-1/2	5/16	Hex	3/32	N/A
1/8" Black Oxide Pin Punch	4-3/4	5/16	Hex	1/8	N/A
5/32" Black Oxide Pin Punch	5	5/16	Hex	5/32	N/A
3/16" Black Oxide Pin Punch	5-1/4	3/8	Hex	3/16	N/A
1/4" Black Oxide Pin Punch	5-3/4	3/8	Hex	1/4	N/A
7/32" Black Oxide Pin Punch	5-1/2	3/8	Hex	7/32	N/A
5/16" Black Oxide Pin Punch	6	7/16	Hex	5/16	N/A
3/16" Black Oxide Pin Punch	6	1/2	Hex	3/16	N/A
1/4" Black Oxide Pin Punch	6	1/2	Hex	1/4	N/A
5/16" Black Oxide Pin Punch	6	1/2	Hex	5/16	N/A
3/8" Black Oxide Pin Punch	6	1/2	Hex	3/8	N/A
5/32" Black Oxide Pin Punch	6	5/16	Hex	5/32	N/A
3/16" Black Oxide Pin Punch	6	3/8	Hex	3/16	N/A
7/32" Black Oxide Pin Punch	6	3/8	Hex	7/32	N/A
1/4" Black Oxide Pin Punch	6	3/8	Hex	1/4	N/A
3/8" Black Oxide Pin Punch	8	5/8	Hex	3/8	N/A
1/2" Black Oxide Pin Punch	10	3/4	Hex	1/2	N/A
1/8" Black Oxide Pin Punch	7-7/8	5/16	Hex	1/8	Extra Long
3/16" Black Oxide Pin Punch	7-7/8	3/8	Hex	3/16	Extra Long
1/4" Black Oxide Pin Punch	7-7/8	3/8	Hex	1/4	Extra Long
5/16" Black Oxide Pin Punch	7-7/8	7/16	Hex	5/16	Extra Long
3/8" Black Oxide Pin Punch	7-7/8	1/2	Hex	3/8	Extra Long
7/32" Black Oxide Pin Punch	7-7/8	3/8	Hex	7/32	Extra Long
5/32" Black Oxide Pin Punch	7-7/8	5/16	Hex	5/32	Extra Long



Pin Punches (Metric)

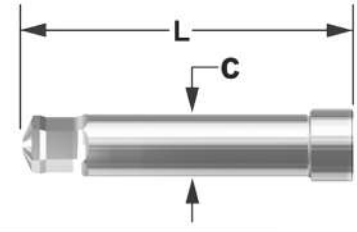
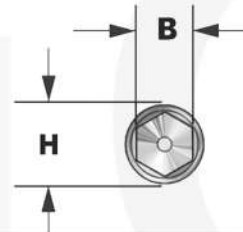
Description	OAL	Body Size	Body Type	Blade Width	Blade Style
#3mm Metric Pin Punch	6	5/16	Hex	3mm	N/A
#4mm Metric Pin Punch	6	5/16	Hex	4mm	N/A
#5mm Metric Pin Punch	6	3/8	Hex	5mm	N/A
#6mm Metric Pin Punch	6	3/8	Hex	6mm	N/A
#7mm Metric Pin Punch	6	3/8	Hex	7mm	N/A
#8mm Metric Pin Punch	6	7/16	Hex	8mm	N/A
#2mm Metric Pin Punch	4	1/4	Hex	2mm	N/A

Hexagon Punches



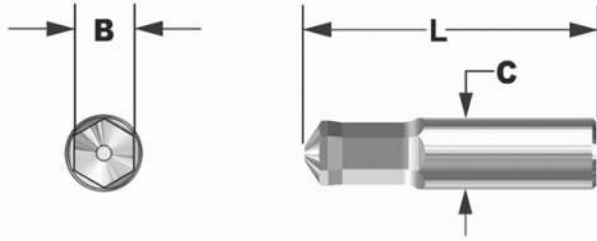
SCREW SIZE	B inch / mm	C inch / mm	h inch / mm	L inch / mm
#2 & #3	.0791 / 2,01	.125 / 3,18	.187 / 4,76	1.02 / 25,9
#4 & #5	.0952 / 2,41	.125 / 3,18	.187 / 4,76	1.02 / 25,9
#6	.1111 / 2,82	.140 / 3,56	.218 / 5,56	1.02 / 25,9
#8	.1426 / 3,61	.176 / 4,47	.218 / 5,56	1.02 / 25,9
#10	.1587 / 4,01	.194 / 4,67	.250 / 6,35	1.02 / 25,9
1/4"	.1900 / 4,83	.229 / 5,81	.281 / 7,14	1.37 / 34,9
5/16"	.2530 / 6,43	.302 / 7,67	.343 / 8,74	1.37 / 34,9
3/8"	.3160 / 8,03	.377 / 9,58	.437 / 11,13	1.37 / 34,9
7/16" & 1/2"	.3790 / 9,63	.450 / 11,43	.500 / 12,70	1.50 / 38,1
5/8"	.5050 / 12,83	.600 / 15,24	.656 / 16,66	2.50 / 63,5
3/4"	.6310 / 16,03	.750 / 19,05	.812 / 20,62	3.00 / 76,2

Metric Hexagon Punches

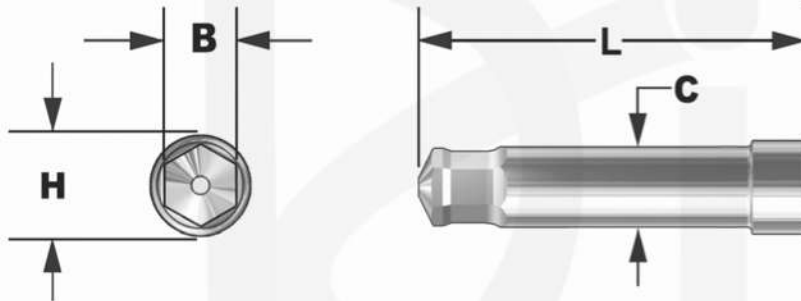


SCREW SIZE	B inch / mm	C inch / mm	h inch / mm	L inch / mm
M3	.1016 / 2,58	.196 / 4,99	.256 / 6,50	1.730 / 44,2
M4	.1213 / 3,08	.196 / 4,99	.256 / 6,50	1.730 / 44,2
M5	.1612 / 4,09	.216 / 5,49	.276 / 7,07	2.283 / 58,0
M6	.2024 / 5,14	.259 / 6,58	.319 / 8,10	2.283 / 58,0
M8	.2417 / 6,14	.314 / 7,98	.374 / 9,50	2.283 / 58,0
M10	.3219 / 8,17	.393 / 9,98	.453 / 11,51	3.150 / 80,0
M12	.4006 / 10,17	.491 / 12,48	.551 / 14,00	3.150 / 80,0
M14	.4808 / 12,21	.589 / 14,98	.650 / 16,51	3.543 / 90,0
M16-M18	.5595 / 14,21	.668 / 16,98	.728 / 18,50	3.543 / 90,0
M20-M22	.6783 / 17,23	.826 / 20,98	.925 / 23,50	3.937 / 100,0
M24-M27	.7589 / 19,27	.905 / 22,00	.965 / 24,50	6.024 / 153,0

Metric Hexagon Punches



SCREW Size	hEx Size	B inch / mm	C inch / mm	L inch / mm
M3	2,5	.1016 / 2,58	.196 / 4,9	1.41 / 36,0
M4	3	.1213 / 3,08	.196 / 4,9	1.41 / 36,0
M5	4	.1612 / 4,09	.236 / 5,9	1.41 / 36,0
M6	5	.2024 / 5,14	.275 / 6,9	1.41 / 36,0
M8	6	.2417 / 6,13	.295 / 7,4	1.41 / 36,0
M10	8	.3219 / 8,17	.393 / 10,0	1.41 / 36,0
M12	10	.4006 / 10,17	.472 / 12,0	1.41 / 36,0
M14	12	.4808 / 12,21	.570 / 14,4	1.85 / 47,0
M16-M18	14	.5595 / 14,21	.668 / 16,9	1.85 / 47,0
M20-M22	17	.6783 / 17,22	.826 / 20,9	2.16 / 55,0
M24-M27	19	.7589 / 19,27	.904 / 22,9	2.36 / 60,0



SCREW Size	B inch / mm	C inch / mm	h inch / mm	L inch / mm
M3	.1016 / 2,58	.137 / 3,50	.197 / 5,00	1.024 / 26,0
M4	.1213 / 3,08	.157 / 4,00	.217 / 5,55	1.024 / 26,0
M5	.1612 / 4,09	.202 / 5,15	.260 / 6,60	1.181 / 30,0
M6	.2024 / 5,14	.250 / 6,35	.312 / 7,90	1.417 / 36,0
M8	.2417 / 6,14	.295 / 7,50	.354 / 9,00	1.417 / 36,0
M10	.3219 / 8,17	.387 / 9,85	.445 / 11,30	1.417 / 36,0
M12	.4006 / 10,17	.478 / 12,15	.539 / 13,70	1.575 / 40,0
M14	.4808 / 12,21	.570 / 14,50	.630 / 16,00	1.969 / 50,0
M16	.5595 / 14,21	.661 / 16,80	.728 / 18,50	2.362 / 60,0
M20	.6783 / 17,23	.797 / 20,25	.866 / 22,00	2.953 / 75,0
M24	.7589 / 19,27	.905 / 23,00	.965 / 24,50	3.150 / 80,0

DIC – INDIA
DEDICATED IMPEX CO.

D - 189, Industrial Focal Point, Patiala
147003 Punjab, India
info@dictoolsindia.com
+91-95922-28222

DIC – UAE
DEDICATED IMPEX FZE

B.C. 1303260, Ajman Free Zone,
P.O. BOX: 47359, Ajman, UAE
info@dictoolsindia.com
(+971) 556721577

DiCTOOLS

A Brand by Dedicated Impex Co.