

# **DiC TOOLS**

A Brand by Dedicated Impex Co.



**GAUGES**

Product Name	Page No.
Metric Thread Gauges .....	01
Thread Plug Gauges .....	02
Plain Plug Gauges .....	03 - 05
Cylindrical Plug Gauges .....	06-07
Taperlock Cylindrical Plug Gauges .....	08
Morse Taper Gauges .....	09
Taper Plug Gauges .....	10
Ring Thread Gauges & Setting Plugs .....	11
Spline Gauges & Spline Ring Gauges .....	12
Plain Ring Setting Gauges .....	13
Carbide Ring Gauges .....	14
Master Setting & Ring Gauges .....	15
Adjustable Snap Gauges .....	16-19
Snap Gauges for Undercuts .....	20
Doubled Ended Snap Gauges .....	21
Metric Trapezoidal Thread Gauges .....	22
Slip Gauges (Individual & Boxed Slips) .....	23
Measuring Pins .....	24
Air Plug Gauges .....	25
Air Ring Gauges & Setting Plug .....	26
Master Setting Disc .....	27
Taper Mandrel .....	28

# Metric Thread Gauges



## Standard Pitch Diameter Chart

NOMINAL SIZE & PITCH	FOR EXTERNAL THREAD				FOR INTERNAL THREAD			
	PITCH DIAMETER GO RING GAGE 6g TOLERANCE		PITCH DIAMETER NOT GO RING GAGE 6g TOLERANCE		PITCH DIAMETER GO PLUG GAGE 6H TOLERANCE		PITCH DIAMETER NOT GO PLUG GAGE 6H TOLERANCE	
	MM	IN. (REF)	MM	IN. (REF)	MM	IN. (REF)	MM	IN. (REF)
M 1.6 X 0.35	1.354	.05331	1.291	.05083	1.373	.05406	1.458	.05740
M 2 X 0.4	1.721	.06776	1.654	.06512	1.740	.06850	1.830	.07205
M 2.5 X 0.45	2.188	.08614	2.117	.08335	2.208	.08693	2.303	.09067
M 3 X 0.5	2.655	.10453	2.580	.10157	2.675	.10531	2.775	.10925
M 3.5 X 0.6	3.089	.12161	3.004	.11827	3.110	.12244	3.222	.12685
M 4 X 0.7	3.523	.13870	3.433	.13516	3.545	.13957	3.663	.14421
M 5 X 0.8	4.456	.17543	4.361	.17169	4.480	.17638	4.605	.18130
M 6 X 1.0	5.324	.20961	5.212	.20520	5.350	.21063	5.500	.21654
M 8 X 1.25	7.160	.28189	7.042	.27724	7.188	.28299	7.348	.28929
M 8 X 1.0	7.324	.28835	7.212	.28394	7.350	.28937	7.500	.29528
M 10 X 1.5	8.994	.35409	8.862	.34890	9.026	.35535	9.206	.36244
M 10 X 1.25	9.160	.36063	9.042	.35598	9.188	.36173	9.348	.36803
M 10 X 1.0	9.324	.36709	9.212	.36268	9.350	.36811	9.500	.37402
M 10 X 0.75	9.491	.37366	9.391	.36972	9.513	.37453	9.645	.37972
M 12 X 1.75	10.829	.42634	10.679	.42043	10.863	.42768	11.063	.43555
M 12 X 1.5	10.994	.43283	10.854	.42732	11.026	.43409	11.216	.44157
M 12 X 1.25	11.160	.43937	11.028	.43417	11.188	.44047	11.368	.44756
M 12 X 1.0	11.324	.44583	11.206	.44118	11.350	.44685	11.510	.45315
M 14 X 2.0	12.663	.49854	12.503	.49224	12.701	.50004	12.913	.50839
M 14 X 1.5	12.994	.51157	12.854	.50606	13.026	.51283	13.216	.52031
M 15 X 1.0	14.324	.56394	14.206	.55929	14.350	.56496	14.510	.57126
M 16 X 2.0	14.663	.57728	14.503	.57098	14.701	.57878	14.913	.58713
M 16 X 1.5	14.994	.59031	14.854	.58480	15.026	.59157	15.216	.59906
M 17 X 1.0	16.324	.64268	16.206	.63803	16.350	.64370	16.510	.65000
M 18 X 1.5	16.994	.66906	16.854	.66354	17.026	.67031	17.216	.67780
M 20 X 2.5	18.334	.72181	18.164	.71512	18.376	.72346	18.600	.73228
M 20 X 1.5	18.994	.74780	18.854	.74228	19.026	.74906	19.216	.75654
M 20 X 1.0	19.324	.76079	19.206	.75614	19.350	.76181	19.510	.76811
M 22 X 2.5	20.334	.80055	20.164	.79386	20.376	.80220	20.600	.81102
M 22 X 1.5	20.994	.82654	20.854	.82102	21.026	.82780	21.216	.83528
M 24 X 3.0	22.003	.86626	21.803	.85839	22.051	.86815	22.316	.87858
M 24 X 2.0	22.663	.89224	22.493	.88555	22.701	.89374	22.925	.90256
M 25 X 1.5	23.994	.94465	23.844	.93874	24.026	.94591	24.226	.95378
M 27 X 3.0	25.003	.98437	24.803	.97650	25.051	.98626	25.316	.99669
M 27 X 2.0	25.663	1.01035	25.493	1.00366	25.701	1.01185	25.925	1.02067
M 30 X 3.5	27.674	1.08953	27.642	1.08118	27.727	1.09161	28.007	1.10264
M 30 X 2.0	28.663	1.12846	28.493	1.12177	28.701	1.12996	28.925	1.13878
M 30 X 1.5	28.994	1.14150	28.844	1.13559	29.026	1.14276	29.226	1.15063
M 33 X 2.0	31.663	1.24657	31.493	1.23988	31.701	1.24807	31.925	1.25689
M 35 X 1.5	33.994	1.33835	33.844	1.33244	34.026	1.33961	34.226	1.34748
M 36 X 4.0	33.342	1.31268	33.118	1.30386	33.402	1.31504	33.702	1.32685
M 36 X 2.0	34.663	1.36469	34.493	1.35799	34.701	1.36618	34.925	1.37500
M 39 X 2.0	37.663	1.48280	37.493	1.47610	37.701	1.48429	37.925	1.49311

# Thread Plug Gauges

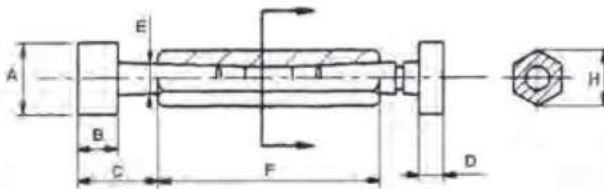
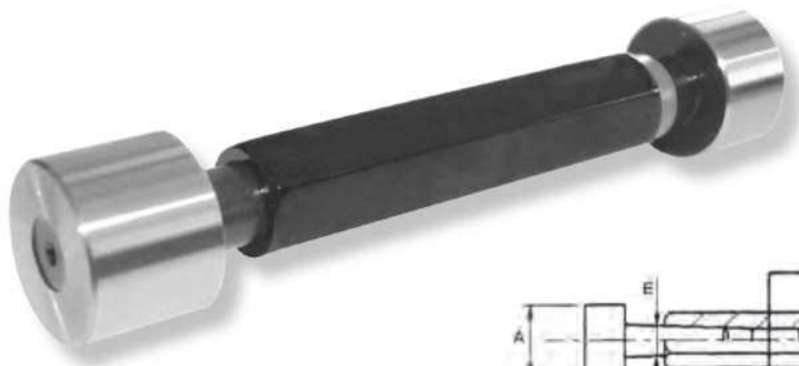


NOMINAL SIZE	GO BASIC ALL CLASSES ALL SERIES	UNIFIED PITCH DIAMETERS				
		NO. J		X TOL. GO =+ NO GO =-	X LEAD TOL.	X ± HALF ANGLE TOL.
		CLASS 2	CLASS 3B			
#0-80 UNF	.0519	.0542	.0536	.0002	.0002	0°30'
#1-64 UNC	.0629	.0655	.0648	.0002	.0002	0°30'
#1-72 UNF	.0640	.0665	.0659	.0002	.0002	0°30'
#2-56 UNC	.0744	.0772	.0765	.0002	.0002	0°30'
#2-64 UNF	.0759	.0786	.0779	.0002	.0002	0°30'
#3-48 UNC	.0855	.0885	.0877	.0002	.0002	0°30'
#3-56 UNF	.0874	.0902	.0895	.0002	.0002	0°30'
#4-40 UNC	.0958	.0991	.0982	.0002	.0002	0°20'
#4-48 UNF	.0985	.1016	.1008	.0002	.0002	0°30'
#5-40 UNC	.1088	.1121	.1113	.0002	.0002	0°20'
#5-44 UNF	.1102	.1134	.1126	.0002	.0002	0°20'
#6-32 UNC	.1177	.1214	.1204	.0003	.0003	0°15'
#6-40 UNF	.1218	.1252	.1243	.0002	.0002	0°20'
#8-32 UNC	.1437	.1475	.1465	.0003	.0003	0°15'
#8-36 UNF	.1460	.1496	.1487	.0002	.0002	0°20'
#10-24 UNC	.1629	.1672	.1661	.0003	.0003	0°15'
#10-32 UNF	.1697	.1736	.1726	.0003	.0003	0°15'
#12-24 UNC	.1889	.1933	.1922	.0003	.0003	0°15'
#12-28 UNF	.1928	.1970	.1959	.0003	.0003	0°15'
#12-32 UNEF	.1957	.1998	.1988	.0003	.0003	0°15'
¼-20 UNC	.2175	.2224	.2211	.0003	.0003	0°15'
¼-28 UNF	.2268	.2311	.2300	.0003	.0003	0°15'
¼-32 UNEF	.2297	.2339	.2328	.0003	.0003	0°15'
⅝-18 UNC	.2764	.2817	.2803	.0003	.0003	0°10'
⅝-24 UNF	.2854	.2902	.2890	.0003	.0003	0°15'
⅝-32 UNEF	.2922	.2964	.2953	.0003	.0003	0°15'
⅜-16 UNC	.3344	.3401	.3387	.0003	.0003	0°10'
⅜-24 UNF	.3479	.3528	.3516	.0003	.0003	0°15'
⅜-32 UNEF	.3547	.3591	.3580	.0003	.0003	0°15'
7/16-14 UNC	.3911	.3972	.3957	.0003	.0003	0°10'
7/16-20 UNF	.4050	.4104	.4091	.0003	.0003	0°15'
7/16-28 UNEF	.4143	.4189	.4178	.0003	.0003	0°15'
½-13 UNC	.4500	.4565	.4548	.0003	.0003	0°10'
½-20 UNF	.4675	.4731	.4717	.0003	.0003	0°15'
½-28 UNEF	.4768	.4816	.4804	.0003	.0003	0°15'
⅞-12 UNC	.5084	.5152	.5135	.0003	.0003	0°10'
⅞-18 UNF	.5264	.5323	.5308	.0003	.0003	0°10'

NOMINAL SIZE	GO BASIC ALL CLASSES ALL SERIES	UNIFIED PITCH DIAMETERS				
		NO. J		X TOL. GO =+ NO GO =-	X LEAD TOL.	X ± HALF ANGLE TOL.
		CLASS 2B	CLASS 3B			
⅞-24 UNEF	.5354	.5405	.5392	.0003	.0003	0°15'
⅞-11 UNC	.5660	.5732	.5714	.0003	.0003	0°10'
⅞-18 UNF	.5889	.5949	.5934	.0003	.0003	0°10'
⅞-24 UNEF	.5979	.6031	.6018	.0003	.0003	0°15'
1 1/16-24 UNEF	.6604	.6656	.6643	.0003	.0003	0°15'
¾-10 UNC	.6850	.6927	.6907	.0003	.0003	0°10'
¾-16 UNF	.7094	.7159	.7143	.0003	.0003	0°10'
¾-20 UNEF	.7175	.7232	.7218	.0003	.0003	0°15'
1 3/16-20 UNEF	.7800	.7857	.7843	.0003	.0003	0°15'
7/8-9 UNC	.8028	.8110	.8089	.0003	.0003	0°10'
7/8-14 UNF	.8286	.8356	.8339	.0003	.0003	0°10'
7/8-20 UNEF	.8425	.8482	.8468	.0003	.0003	0°15'
1 5/16-20 UNEF	.9050	.9109	.9094	.0003	.0003	0°15'
1"-8 UNC	.9188	.9276	.9254	.0004	.0004	0°05'
1"-12 UNF	.9459	.9535	.9516	.0003	.0003	0°10'
1"-14 UNS	.9536	.9609	.9590	.0003	.0003	0°10'
1"-20 UNEF	.9675	.9734	.9719	.0003	.0003	0°15'
1 1/16-12 UN	1.0084	1.0158	1.0139	.0003	.0003	0°10'
1 1/16-18 UNEF	1.0264	1.0326	1.0310	.0003	.0003	0°10'
1 1/8-7 UNC	1.0322	1.0416	1.0393	.0004	.0004	0°05'
1 1/8-12 UNF	1.0709	1.0787	1.0768	.0003	.0003	0°10'
1 1/8-18 UNEF	1.0889	1.0951	1.0935	.0003	.0003	0°10'
1 3/16-12 UN	1.1334	1.1409	1.1390	.0003	.0003	0°10'
1 3/16-18 UNEF	1.1514	1.1577	1.1561	.0003	.0003	0°10'
1 ¼-7 UNC	1.1572	1.1668	1.1644	.0004	.0004	0°05'
1 ¼-12 UNF	1.1959	1.2039	1.2019	.0003	.0003	0°10'
1 ¼-18 UNEF	1.2139	1.2202	1.2186	.0003	.0003	0°10'
1 5/16-12 UN	1.2584	1.2659	1.2640	.0003	.0003	0°10'
1 5/16-18 UNEF	1.2764	1.2827	1.2811	.0003	.0003	0°10'
1 5/8-6 UNC	1.2667	1.2771	1.2745	.0004	.0004	0°05'
1 5/8-12 UNF	1.3209	1.3291	1.3270	.0003	.0003	0°10'
1 5/8-18 UNEF	1.3389	1.3452	1.3436	.0003	.0003	0°10'
1 7/8-12 UN	1.3834	1.3910	1.3891	.0003	.0003	0°10'
1 7/8-18 UNEF	1.4014	1.4079	1.4062	.0003	.0003	0°10'
1 ½-6 UNC	1.3917	1.4022	1.3996	.0004	.0004	0°05'
1 ½-12 UNF	1.4459	1.4542	1.4522	.0003	.0003	0°10'
1 ½-18 UNEF	1.4639	1.4704	1.4687	.0003	.0003	0°10'

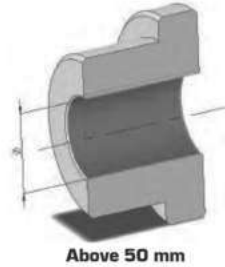
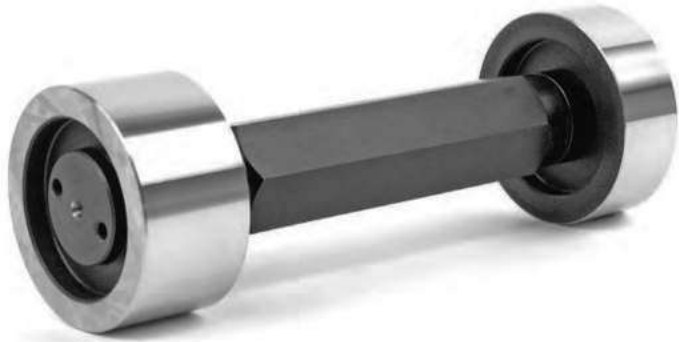


# Plain Plug Gauges

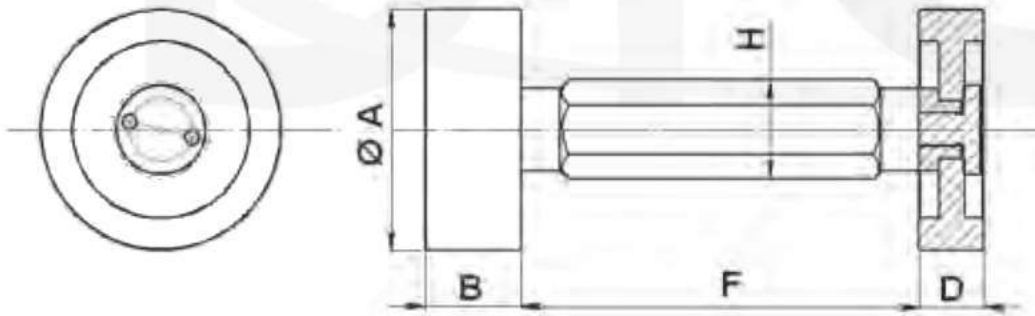


From	A	to	B	C	D	E	F	H
Ø 1		Ø 3	6,5	15	4	2.5	48	6,8
Ø 3		Ø 4	8	16	5	2.5	48	7,6
Ø 4		Ø 6	8	17	5	4	48	7,6
Ø 6		Ø 10	10	19	6.5	5.5	56	10
Ø 10		Ø 14	10	20	8	7	63	12,3
Ø 14		Ø 18	12	23	8	9	70	15,7
Ø 18		Ø 24	16	28	12	12	80	19,4
Ø 24		Ø 33	20	33	16	12	80	19,4
Ø 33		Ø 40	21	33	16	16	90	26,7
Ø 40		Ø 50	25	42	20	16	90	26,7

# Plain Plug Gauges



A From To		B	D	F	H
Ø 50	Ø 75	30	20	124	30,8
Greater than Ø 75 mm		30	20	124	30,8

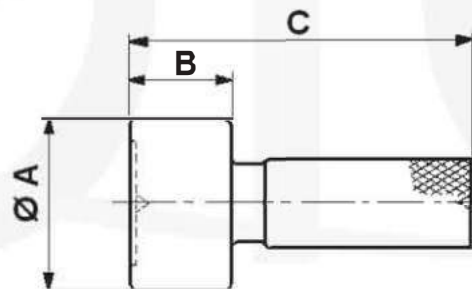


# Plain Plug Gauges

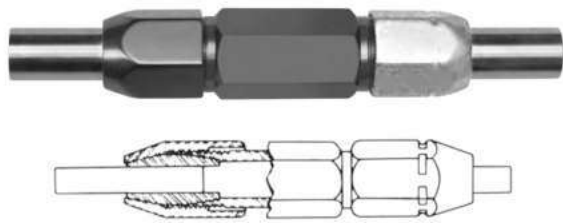


A		B	C
from	to		
up to 15 mm		16	90
Ø 2,5	Ø 5	10	22
Ø 15	Ø 50	30	100
Ø 50	Ø 100	30	105

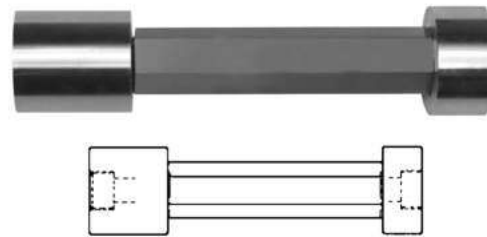
A		B	C
from	to		H13
Ø 50	Ø 80	18	Ø 20
Ø 80	Ø 125	20	Ø 20
Ø 125	Ø 180	25	Ø 20
Ø 180	Ø 250	25	Ø 25
Ø 250	Ø 300	30	Ø 30



# Cylindrical Plug Gauges



**Reversible Style**



**Trilock Style**

SIZE ABOVE – INCLUDING	CLASS	TOL.	GO OR NO GO LENGTH	HANDLE #
.010 to .075 .254mm to 1.91mm	XX	.00002	2"	1W
	X	.00004		1W
	Y	.00007		1W
	Z	.00010		1W
.075 to .180 1.91mm to 4.57mm	XX	.00002	2"	2W
	X	.00004		2W
	Y	.00007		2W
	Z	.00010		2W
.180 to .281 4.57mm to 7.14mm	XX	.00002	2"	3W
	X	.00004		3W
	Y	.00007		3W
	Z	.00010		3W
.281 to .406 7.14mm to 10.31mm	XX	.00002	2"	4W
	X	.00004		4W
	Y	.00007		4W
	Z	.00010		4W
.406 to .510 10.31mm to 12.95mm	XX	.00002	2"	5W
	X	.00004		5W
	Y	.00007		5W
	Z	.00010		5W
.510 to .635 12.95mm to 16.13mm	XX	.00002	2"	6W
	X	.00004		6W
	Y	.00007		6W
	Z	.00010		6W
.635 to .760 16.13mm to 19.30mm	XX	.00002	2"	7W
	X	.00004		7W
	Y	.00007		7W
	Z	.00010		7W
.760 to .825 19.30mm to 20.96mm	XX	.00002	2"	8W
	X	.00004		8W
	Y	.00007		8W
	Z	.00010		8W
.825 to 1.010 20.96mm to 25.65mm	XX	.00003	2"	8W
	X	.00006		8W
	Y	.00009		8W
	Z	.00012		8W

SIZE ABOVE – INCLUDING	CLASS	TOL.	GO LENGTH	NO GO LENGTH	HANDLE #
.760 to .947 19.30mm to 24.05mm	XX	.00003	1-1/4"	3/4"	2-1/2
	X	.00006			2-1/2
	Y	.00009			2-1/2
	Z	.00012			2-1/2
.947 to 1.135 24.05mm to 28.83mm	XX	.00003	1-3/8"	3/4"	3-1/2
	X	.00006			3-1/2
	Y	.00009			3-1/2
	Z	.00012			3-1/2
1.135 to 1.510 28.83mm to 38.35mm	XX	.00003	1-1/2"	3/4"	4-1/2
	X	.00006			4-1/2
	Y	.00009			4-1/2
	Z	.00012			4-1/2
1.510 to 2.010 38.35mm to 51.05mm	XX	.00004	1-7/8"	7/8"	5-1/2
	X	.00008			5-1/2
	Y	.00012			5-1/2
	Z	.00016			5-1/2
2.010 to 2.510 51.05mm to 63.75mm	XX	.00004	2"	7/8"	6
	X	.00008			6
	Y	.00012			6
	Z	.00016			6
2.510 to 3.510 63.75mm to 89.15mm	XX	.00005	2"	1"	7
	X	.00010			7
	Y	.00015			7
	Z	.00020			7
3.510 to 4.510 89.15mm to 114.55mm	XX	.00005	2-1/8"	1"	7
	X	.00010			7
	Y	.00015			7
	Z	.00020			7
4.510 to 6.510 114.55mm to 165.35mm	XX	.000065	2-1/8"	1"	7
	X	.00013			7
	Y	.00019			7
	Z	.00025			7
6.510 to 8.010 165.35mm to 203.45mm	XX	.00008	2-1/8"	1"	7
	X	.00016			7
	Y	.00024			7
	Z	.00032			7



# Cylindrical Plug Gauges

## Taperlock Style

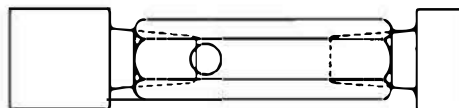
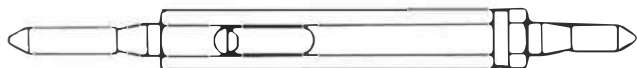
SIZE ABOVE - INCLUDING	CLASS	TOL.	MEMBER LENGTH	GO PORTION	NO GO PORTION	HANDLE #
.105 to .150 2.67mm to 3.81mm	XX	.00002	23/32"	3/8"	7/32"	00
	X	.00004				00
	Y	.00007				00
	Z	.00010				00
.150 to .230 3.81mm to 5.84mm	XX	.00002	13/16"	13/32"	9/32"	0
	X	.00004				0
	Y	.00007				0
	Z	.00010				0
.230 to .365 5.84mm to 9.27mm	XX	.00002	1-3/16"	3/4"	5/16"	1
	X	.00004				1
	Y	.00007				1
	Z	.00010				1
.365 to .510 9.27mm to 12.95mm	XX	.00002	1-1/2"	1"	3/8"	2
	X	.00004				2
	Y	.00007				2
	Z	.00010				2
.510 to .825 12.95mm to 20.96mm	XX	.00002	1-7/8"	1-1/4"	1/2"	3
	X	.00004				3
	Y	.00007				3
	Z	.00010				3
.825 to 1.135 20.96mm to 28.83mm	XX	.00003	2-1/8"	1-3/8"	5/8"	4
	X	.00006				4
	Y	.00009				4
	Z	.00012				4
1.135 to 1.510 28.83mm to 38.35mm	XX	.00003	2-3/8"	1-1/2"	3/4"	5
	X	.00006				5
	Y	.00009				5
	Z	.00012				5

## Trilock Style

SIZE ABOVE - INCLUDING	CLASS	TOL.	MEMBER LENGTH	GO PORTION	NO GO PORTION	HANDLE #
1.510 to 2.010 38.35mm to 51.05mm	XX	.00004	2-7/8"	1-7/8"	7/8"	5-1/2
	X	.00008				5-1/2
	Y	.00012				5-1/2
	Z	.00016				5-1/2
2.010 to 2.510 51.05mm to 63.75mm	XX	.00004	3"	2"	7/8"	6
	X	.00008				6
	Y	.00012				6
	Z	.00016				6
2.510 to 3.510 63.75mm to 89.15mm	XX	.00005	3"	2"	7/8"	7
	X	.00010				7
	Y	.00015				7
	Z	.00020				7
3.510 to 4.510 89.15mm to 114.55mm	XX	.00005	3-1/8"	2-1/8"	7/8"	7
	X	.00010				7
	Y	.00015				7
	Z	.00020				7

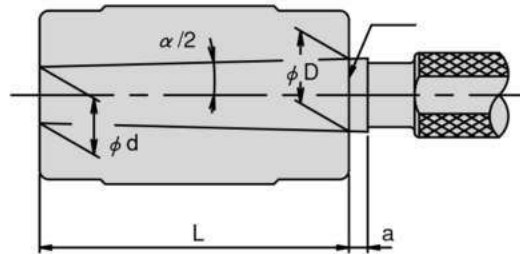


# Taperlock Cylindrical Plug Gauges



SIZE ABOVE - INCLUDING	CLASS	TOL.	GO LENGTH	NO GO LENGTH	HANDLE #
.059 to .105 1.50mm to 2.67mm	XX	.00002	3/8"	3/16"	000
	X	.00004			000
	Y	.00007			000
	Z	.00010			000
.105 to .150 2.67mm to 3.81mm	XX	.00002	3/8"	7/32"	00
	X	.00004			00
	Y	.00007			00
	Z	.00010			00
.150 to .230 3.81mm to 5.84mm	XX	.00002	13/32"	9/32"	0
	X	.00004			0
	Y	.00007			0
	Z	.00010			0
.230 to .365 5.84mm to 9.27mm	XX	.00002	3/4"	5/16"	1
	X	.00004			1
	Y	.00007			1
	Z	.00010			1
.365 to .510 9.27mm to 12.95mm	XX	.00002	1"	3/8"	2
	X	.00004			2
	Y	.00007			2
	Z	.00010			2
.510 to .825 12.95mm to 20.96mm	XX	.00002	1-1/4"	1/2"	3
	X	.00004			3
	Y	.00007			3
	Z	.00010			3
.825 to 1.135 20.96mm to 28.83mm	XX	.00003	1-1/2"	5/8"	4
	X	.00006			4
	Y	.00009			4
	Z	.00012			4
1.135 to 1.510 28.83mm to 38.35mm	XX	.00003	1-5/8"	3/4"	5
	X	.00006			5
	Y	.00009			5
	Z	.00012			5

# Morse Taper Gauges



## Basic size

Morse taper No.	Taper		Half angle of taper angle	(mm) Size of tapered portion			
		Decimal reduced value		D	d	L	a
MT 0	1/19.212	0.052050	1°29'27"	9.045	6.442	50	3
MT 1	1/20.047	0.049882	1°25'43"	12.065	9.396	53.5	3.5
MT 2	1/20.020	0.049951	1°25'50"	17.780	14.583	64	5
MT 3	1/19.922	0.050196	1°26'16"	23.825	19.759	81	5
MT 4	1/19.254	0.051938	1°29'15"	31.267	25.943	102.5	6.5
MT 5	1/19.002	0.052626	1°30'26"	44.399	37.584	129.5	6.5
MT 6	1/19.180	0.052138	1°29'36"	63.348	53.859	182	8
MT 7	1/19.231	0.052000	1°29'22"	83.058	70.058	250	10

## Accuracy

(Unit : mm)

Morse taper No.	Dimensional deviation of D	Taper accuracy	Dimensional deviation of L	Dimensional deviation of a
MT 0	0.0045	0.002	0.015	0.1
MT 1	0.0055	0.002	0.015	0.1
MT 2	0.0055	0.002	0.015	0.1
MT 3	0.0065	0.0025	0.020	0.2
MT 4	0.008	0.0025	0.020	0.2
MT 5	0.008	0.003	0.030	0.2
MT 6	0.0095	0.0035	0.030	0.2
MT 7	0.011	0.005	0.030	0.2

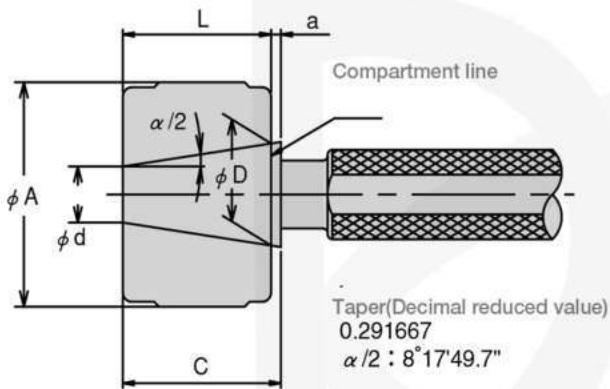
# Taper Plug Gauges



## Basic size

(Unit : mm)

7/24 taper No.	Size of tapered portion					A
	D	d	L	a	C	
NT10	15.875	9.525	21.770	1.6	23.370	36
NT20	22.225	12.700	32.657	1.6	34.257	50
NT25	25.400	13.818	39.711	1.6	41.311	55
NT30	31.750	17.467	48.971	1.6	50.571	55
NT35	38.100	21.431	57.150	1.6	58.750	65
NT40	44.450	25.400	65.316	1.6	66.916	72
NT45	57.150	32.610	84.138	1.6	85.738	90
NT50	69.850	39.676	103.454	3.2	106.654	105
NT55	88.900	50.469	131.763	3.2	134.963	130
NT60	107.950	60.722	161.925	3.2	165.125	160



## Accuracy

(Unit : mm)

7/24 taper No.	Taper (Decimal reduced value)	Dimensional deviation of D	Taper accuracy	Dimensional deviation of L	Dimensional deviation of a
NT10	0.291667	0.003	0.003	0.005	0.25
NT20	0.291667	0.003	0.003	0.005	0.25
NT25	0.291667	0.003	0.003	0.005	0.25
NT30	0.291667	0.004	0.004	0.010	0.25
NT35	0.291667	0.004	0.004	0.010	0.25
NT40	0.291667	0.004	0.004	0.010	0.25
NT45	0.291667	0.004	0.004	0.010	0.25
NT50	0.291667	0.004	0.004	0.010	0.25
NT55	0.291667	0.004	0.004	0.010	0.25
NT60	0.291667	0.005	0.005	0.010	0.25

# Ring Thread Gauges & Setting Plugs

## Standard Pitch Diameter Chart



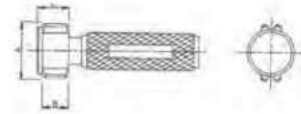
NOMINAL SIZE	UNIFIED PITCH DIAMETERS				X TOL. GO = - NO GO = +
	CLASS 2A		CLASS 3A		
	GO	NOT GO	GO	NOT GO	
#0-80 UNF	.0514	.0496	.0519	.0506	.0002
#1-64 UNC	.0623	.0603	.0629	.0614	.0002
#1-72 UNF	.0634	.0615	.0640	.0626	.0002
#2-56 UNC	.0738	.0717	.0744	.0728	.0002
#2-64 UNF	.0753	.0733	.0759	.0744	.0002
#3-48 UNC	.0848	.0825	.0855	.0838	.0002
#3-56 UNF	.0867	.0845	.0874	.0858	.0002
#4-40 UNC	.0950	.0925	.0958	.0939	.0002
#4-48 UNF	.0978	.0954	.0985	.0967	.0002
#5-40 UNC	.1080	.1054	.1088	.1069	.0002
#5-44 UNF	.1095	.1070	.1102	.1083	.0002
#6-32 UNC	.1169	.1141	.1177	.1156	.0003
#6-40 UNF	.1210	.1184	.1218	.1198	.0002
#8-32 UNC	.1428	.1399	.1437	.1415	.0003
#8-36 UNF	.1452	.1424	.1460	.1439	.0002
#10-24 UNC	.1619	.1586	.1629	.1604	.0003
#10-32 UNF	.1688	.1658	.1697	.1674	.0003
#12-24 UNC	.1879	.1845	.1889	.1863	.0003
#12-28 UNF	.1918	.1886	.1928	.1904	.0003
#12-32 UNEF	.1948	.1917	.1957	.1933	.0003
¼-20 UNC	.2164	.2127	.2175	.2147	.0003
¼-28 UNF	.2258	.2225	.2268	.2243	.0003
¼-32 UNEF	.2287	.2255	.2297	.2273	.0003
⅜-18 UNC	.2752	.2712	.2764	.2734	.0003
⅜-24 UNF	.2843	.2806	.2854	.2827	.0003
⅜-32 UNEF	.2912	.2880	.2922	.2898	.0003
½-16 UNC	.3331	.3287	.3344	.3311	.0003
½-24 UNF	.3468	.3430	.3479	.3450	.0003
½-32 UNEF	.3537	.3503	.3547	.3522	.0003
⅞-14 UNC	.3897	.3850	.3911	.3876	.0003
⅞-20 UNF	.4037	.3995	.4050	.4019	.0003
⅞-28 UNEF	.4132	.4096	.4143	.4116	.0003
1-13 UNC	.4485	.4435	.4500	.4463	.0003
1-20 UNF	.4662	.4619	.4675	.4643	.0003
1-28 UNEF	.4757	.4720	.4768	.4740	.0003
1 ⅛-12 UNC	.5068	.5016	.5084	.5045	.0003
1 ⅛-18 UNF	.5250	.5205	.5264	.5230	.0003

NOMINAL SIZE	UNIFIED PITCH DIAMETERS				X TOL. GO = - NO GO = +
	CLASS 2A		CLASS 3A		
	GO	NOT GO	GO	NOT GO	
¼-24 UNEF	.5342	.5303	.5354	.5325	.0003
⅜-11 UNC	.5644	.5589	.5660	.5619	.0003
⅜-18 UNF	.5875	.5828	.5889	.5854	.0003
⅜-24 UNEF	.5967	.5927	.5979	.5949	.0003
1 ⅛-24 UNEF	.6592	.6552	.6604	.6574	.0003
¾-10 UNC	.6832	.6773	.6850	.6806	.0003
¾-16 UNF	.7079	.7029	.7094	.7056	.0003
¾-20 UNEF	.7162	.7118	.7175	.7142	.0003
1 ⅜-20 UNEF	.7787	.7743	.7800	.7767	.0003
⅞-9 UNC	.8009	.7946	.8028	.7981	.0003
⅞-14 UNF	.8270	.8216	.8286	.8245	.0003
⅞-20 UNEF	.8412	.8368	.8425	.8392	.0003
1 ⅝-20 UNEF	.9036	.8991	.9050	.9016	.0003
1"-8 UNC	.9168	.9100	.9188	.9137	.0004
1"-12 UNF	.9441	.9382	.9459	.9415	.0003
1"-14 UNS	.9519	.9463	.9536	.9494	.0003
1"-20 UNEF	.9661	.9616	.9675	.9641	.0003
1 ⅛-12 UN	1.0067	1.0010	1.0084	1.0042	.0003
1 ⅛-18 UNEF	1.0250	1.0203	1.0264	1.0228	.0003
1 ⅝-7 UNC	1.0300	1.0228	1.0322	1.0268	.0004
1 ⅝-12 UNF	1.0691	1.0631	1.0709	1.0664	.0003
1 ⅝-18 UNEF	1.0875	1.0828	1.0889	1.0853	.0003
1 ⅞-12 UN	1.1317	1.1259	1.1334	1.1291	.0003
1 ⅞-18 UNEF	1.1499	1.1450	1.1514	1.1478	.0003
1 ¾-7 UNC	1.1550	1.1476	1.1572	1.1517	.0004
1 ¾-12 UNF	1.1941	1.1879	1.1959	1.1913	.0003
1 ¾-18 UNEF	1.2124	1.2075	1.2139	1.2103	.0003
1 ⅞-12 UN	1.2567	1.2509	1.2584	1.2541	.0003
1 ⅞-18 UNEF	1.2749	1.2700	1.2764	1.2728	.0003
1 ⅞-6 UNC	1.2643	1.2563	1.2667	1.2607	.0004
1 ⅞-12 UNF	1.3190	1.3127	1.3209	1.3162	.0003
1 ⅞-18 UNEF	1.3374	1.3325	1.3389	1.3353	.0003
1 ⅞-12 UN	1.3816	1.3757	1.3834	1.3790	.0003
1 ⅞-18 UNEF	1.3999	1.3949	1.4014	1.3977	.0003
1 ½-6 UNC	1.3893	1.3812	1.3917	1.3856	.0004
1 ½-12 UNF	1.4440	1.4376	1.4459	1.4411	.0003
1 ½-18 UNEF	1.4624	1.4574	1.4639	1.4602	.0003

# Spline Gauges



**60 plug**



**NO60 plug**

A		B	C
From	to		
Up to	8 mm	6	10
Ø 8	Ø 12	8	12
Ø 12	Ø 18	12	17
Ø 18	Ø 28	16	21
Ø 28	Ø 38	22	27
Ø 38	Ø 48	28	36
Ø 48	Ø 70	30	38
Ø 70	Ø 120	40	48
Ø 120	Ø 220	50	58

A		B	C
From	to		
Up to	8 mm	4	8
Ø 8	Ø 12	6	10
Ø 12	Ø 18	8	13
Ø 18	Ø 28	10	15
Ø 28	Ø 38	12	18
Ø 38	Ø 48	14	22
Ø 48	Ø 70	15	23
Ø 70	Ø 120	20	28
Ø 120	Ø 220	25	33

# Spline Ring Gauges

**60 ring**

A		B	C
From	To		
Up to	12 mm	45	10
Ø 12	Ø 18	53	16
Ø 18	Ø 28	63	22
Ø 28	Ø 36	71	25
Ø 36	Ø 50	85	25
Ø 50	Ø 60	100	30
Ø 60	Ø 70	112	35
Ø 70	Ø 80	125	35
Ø 80	Ø 90	140	35
Ø 90	Ø 100	150	35
Ø 100	Ø 120	170	40
Ø 120	Ø 140	190	45
Ø 140	Ø 160	210	50
Ø 160	Ø 180	230	50
Ø 180	Ø 200	250	50
Ø 200	Ø 220	280	50



**NO60 ring**

A		B	C
From	To		
Up to	12 mm	45	8
Ø 12	Ø 18	53	11
Ø 18	Ø 28	63	14
Ø 28	Ø 36	71	16
Ø 36	Ø 50	85	16
Ø 50	Ø 60	100	20
Ø 60	Ø 70	112	20
Ø 70	Ø 80	125	23
Ø 80	Ø 90	140	23
Ø 90	Ø 100	150	23
Ø 100	Ø 120	170	25
Ø 120	Ø 140	190	25
Ø 140	Ø 160	210	30
Ø 160	Ø 180	230	30
Ø 180	Ø 200	250	30
Ø 200	Ø 220	280	30

# Plain Ring Setting Gauges



A		B	C
From	To	mini	
Ø 1	Ø 2,5	4	22
Ø 2,5	Ø 5	5	22
Ø 5	Ø 10	8	32
Ø 10	Ø 15	10	38
Ø 15	Ø 20	12	45
Ø 20	Ø 25	14	53
Ø 25	Ø 32	16	63
Ø 32	Ø 40	18	71
Ø 40	Ø 50	20	85
Ø 50	Ø 60	20	100

A		B	C
From	To	mini	
Ø 60	Ø 70	24	112
Ø 70	Ø 80	24	125
Ø 80	Ø 90	24	140
Ø 90	Ø 100	24	160
Ø 100	Ø 110	28	170
Ø 110	Ø 120	28	180
Ø 120	Ø 130	28	190
Ø 130	Ø 140	28	200
Ø 140	Ø 150	28	212
Ø 150	Ø 160	28	224

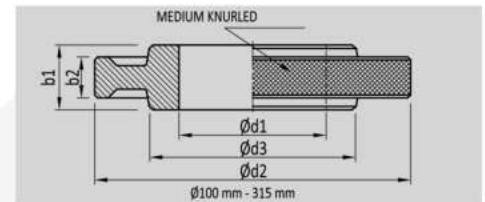
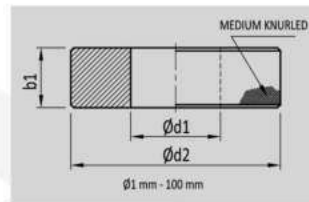
# Thread Plug Gauges

NOMINAL SIZE	GO BASIC ALL CLASSES ALL SERIES	UNIFIED PITCH DIAMETERS				
		NOT GO		X TOL. GO =+ NO GO =-	X LEAD TOL.	X ± HALF ANGLE TOL.
		CLASS 2B	CLASS 3B			
#0-80 UNF	.0519	.0542	.0536	.0002	.0002	0°30'
#1-64 UNC	.0629	.0655	.0648	.0002	.0002	0°30'
#1-72 UNF	.0640	.0665	.0659	.0002	.0002	0°30'
#2-56 UNC	.0744	.0772	.0765	.0002	.0002	0°30'
#2-64 UNF	.0759	.0786	.0779	.0002	.0002	0°30'
#3-48 UNC	.0855	.0885	.0877	.0002	.0002	0°30'
#3-56 UNF	.0874	.0902	.0895	.0002	.0002	0°30'
#4-40 UNC	.0958	.0991	.0982	.0002	.0002	0°20'
#4-48 UNF	.0985	.1016	.1008	.0002	.0002	0°30'
#5-40 UNC	.1088	.1121	.1113	.0002	.0002	0°20'
#5-44 UNF	.1102	.1134	.1126	.0002	.0002	0°20'
#6-32 UNC	.1177	.1214	.1204	.0003	.0003	0°15'
#6-40 UNF	.1218	.1252	.1243	.0002	.0002	0°20'
#8-32 UNC	.1437	.1475	.1465	.0003	.0003	0°15'
#8-36 UNF	.1460	.1496	.1487	.0002	.0002	0°20'
#10-24 UNC	.1629	.1672	.1661	.0003	.0003	0°15'
#10-32 UNF	.1697	.1736	.1726	.0003	.0003	0°15'
#12-24 UNC	.1889	.1933	.1922	.0003	.0003	0°15'
#12-28 UNF	.1928	.1970	.1959	.0003	.0003	0°15'
#12-32 UNEF	.1957	.1998	.1988	.0003	.0003	0°15'
¼-20 UNC	.2175	.2224	.2211	.0003	.0003	0°15'
¼-28 UNF	.2268	.2311	.2300	.0003	.0003	0°15'
¼-32 UNEF	.2297	.2339	.2328	.0003	.0003	0°15'
⅕-18 UNC	.2764	.2817	.2803	.0003	.0003	0°10'
⅕-24 UNF	.2854	.2902	.2890	.0003	.0003	0°15'
⅕-32 UNEF	.2922	.2964	.2953	.0003	.0003	0°15'
⅜-16 UNC	.3344	.3401	.3387	.0003	.0003	0°10'
⅜-24 UNF	.3479	.3528	.3516	.0003	.0003	0°15'
⅜-32 UNEF	.3547	.3591	.3580	.0003	.0003	0°15'
7/16-14 UNC	.3911	.3972	.3957	.0003	.0003	0°10'
7/16-20 UNF	.4050	.4104	.4091	.0003	.0003	0°15'
7/16-28 UNEF	.4143	.4189	.4178	.0003	.0003	0°15'
½-13 UNC	.4500	.4565	.4548	.0003	.0003	0°10'
½-20 UNF	.4675	.4731	.4717	.0003	.0003	0°15'
½-28 UNEF	.4768	.4816	.4804	.0003	.0003	0°15'
9/16-12 UNC	.5084	.5152	.5135	.0003	.0003	0°10'
9/16-18 UNF	.5264	.5323	.5308	.0003	.0003	0°10'

NOMINAL SIZE	GO BASIC ALL CLASSES ALL SERIES	UNIFIED PITCH DIAMETERS				
		NOT GO		X TOL. GO =+ NO GO =-	X LEAD TOL.	X ± HALF ANGLE TOL.
		CLASS 2B	CLASS 3B			
9/16-24 UNEF	.5354	.5405	.5392	.0003	.0003	0°15'
5/8-11 UNC	.5660	.5732	.5714	.0003	.0003	0°10'
5/8-18 UNF	.5889	.5949	.5934	.0003	.0003	0°10'
5/8-24 UNEF	.5979	.6031	.6018	.0003	.0003	0°15'
1 1/16-24 UNEF	.6604	.6656	.6643	.0003	.0003	0°15'
¾-10 UNC	.6850	.6927	.6907	.0003	.0003	0°10'
¾-16 UNF	.7094	.7159	.7143	.0003	.0003	0°10'
¾-20 UNEF	.7175	.7232	.7218	.0003	.0003	0°15'
1 3/16-20 UNEF	.7800	.7857	.7843	.0003	.0003	0°15'
7/8-9 UNC	.8028	.8110	.8089	.0003	.0003	0°10'
7/8-14 UNF	.8286	.8356	.8339	.0003	.0003	0°10'
7/8-20 UNEF	.8425	.8482	.8468	.0003	.0003	0°15'
1 5/16-20 UNEF	.9050	.9109	.9094	.0003	.0003	0°15'
1"-8 UNC	.9188	.9276	.9254	.0004	.0004	0°05'
1"-12 UNF	.9459	.9535	.9516	.0003	.0003	0°10'
1"-14 UNS	.9536	.9609	.9590	.0003	.0003	0°10'
1"-20 UNEF	.9675	.9734	.9719	.0003	.0003	0°15'
1 1/16-12 UN	1.0084	1.0158	1.0139	.0003	.0003	0°10'
1 1/16-18 UNEF	1.0264	1.0326	1.0310	.0003	.0003	0°10'
1 1/8-7 UNC	1.0322	1.0416	1.0393	.0004	.0004	0°05'
1 1/8-12 UNF	1.0709	1.0787	1.0768	.0003	.0003	0°10'
1 1/8-18 UNEF	1.0889	1.0951	1.0935	.0003	.0003	0°10'
1 3/8-12 UN	1.1334	1.1409	1.1390	.0003	.0003	0°10'
1 3/8-18 UNEF	1.1514	1.1577	1.1561	.0003	.0003	0°10'
1 ¼-7 UNC	1.1572	1.1668	1.1644	.0004	.0004	0°05'
1 ¼-12 UNF	1.1959	1.2039	1.2019	.0003	.0003	0°10'
1 ¼-18 UNEF	1.2139	1.2202	1.2186	.0003	.0003	0°10'
1 5/8-12 UN	1.2584	1.2659	1.2640	.0003	.0003	0°10'
1 5/8-18 UNEF	1.2764	1.2827	1.2811	.0003	.0003	0°10'
1 ¾-6 UNC	1.2667	1.2771	1.2745	.0004	.0004	0°05'
1 ¾-12 UNF	1.3209	1.3291	1.3270	.0003	.0003	0°10'
1 ¾-18 UNEF	1.3389	1.3452	1.3436	.0003	.0003	0°10'
1 7/8-12 UN	1.3834	1.3910	1.3891	.0003	.0003	0°10'
1 7/8-18 UNEF	1.4014	1.4079	1.4062	.0003	.0003	0°10'
1 ½-6 UNC	1.3917	1.4022	1.3996	.0004	.0004	0°05'
1 ½-12 UNF	1.4459	1.4542	1.4522	.0003	.0003	0°10'
1 ½-18 UNEF	1.4639	1.4704	1.4687	.0003	.0003	0°10'



# Master Setting Ring Gauges



Nominal Diameter Range (mm)	Size Tolerance (mm)	Roundness & Parallelism
1-3	$\pm 0.0015$	0.0003
3-6	$\pm 0.002$	0.0004
6-10	$\pm 0.002$	0.0004
10-18	$\pm 0.0025$	0.0005
18-30	$\pm 0.003$	0.0006
30-50	$\pm 0.0035$	0.0007
50-80	$\pm 0.004$	0.0008
80-120	$\pm 0.005$	0.001
120-180	$\pm 0.006$	0.0012
180-250	$\pm 0.007$	0.0014
250-315	$\pm 0.008$	0.0016

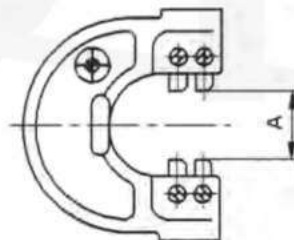
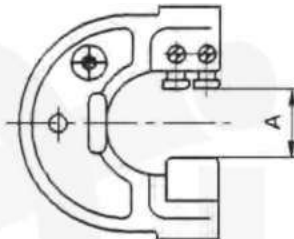
$\phi d1$		$\phi d2$	$b1$
ABOVE	UPTO & INC.		
1.5	2.5	22	4
2.5	5.0	22	5
5.0	10.0	32	8
10.0	15.0	38	10
15.0	20.0	45	12
20.0	25.0	53	14
25.0	32.0	63	16
32.0	40.0	71	18
40.0	50.0	85	20
50.0	60.0	100	20
60.0	70.0	112	24
70.0	80.0	125	24
80.0	90.0	140	24
90.0	100.0	160	24

$\phi d1$		$\phi d2$	$\phi d3$	THICKNESS	
ABOVE	UPTO & INC.			$b1$	$b2$
100.0	110.0	170	132	28	14
110.0	120.0	180	140	28	16
120.0	130.0	190	150	28	16
130.0	140.0	200	160	28	18
140.0	150.0	212	170	28	18
150.0	160.0	224	180	28	20
160.0	170.0	236	190	32	20
170.0	180.0	250	200	32	20
180.0	190.0	265	212	32	22
190.0	200.0	280	224	32	22
200.0	212.0	300	236	32	22
212.0	224.0	315	250	32	25
224.0	236.0	335	265	36	25
236.0	250.0	355	280	36	28
250.0	265.0	375	300	36	28
265.0	280.0	400	315	36	28
280.0	300.0	425	335	36	32
300.0	315.0	450	355	36	32

# Adjustable Snap Gauges



CMRA	A	
	From	To
1	Ø 0	Ø 13
2	Ø 13	Ø 25
3	Ø 25	Ø 38
4	Ø 38	Ø 51
5	Ø 51	Ø 64
6	Ø 64	Ø 76
7	Ø 76	Ø 95
8	Ø 95	Ø 114
9	Ø 114	Ø 133
10	Ø 133	Ø 152
11	Ø 152	Ø 178
12	Ø 178	Ø 203
13	Ø 203	Ø 229
14	Ø 229	Ø 254
15	Ø 254	Ø 279
16	Ø 279	Ø 305

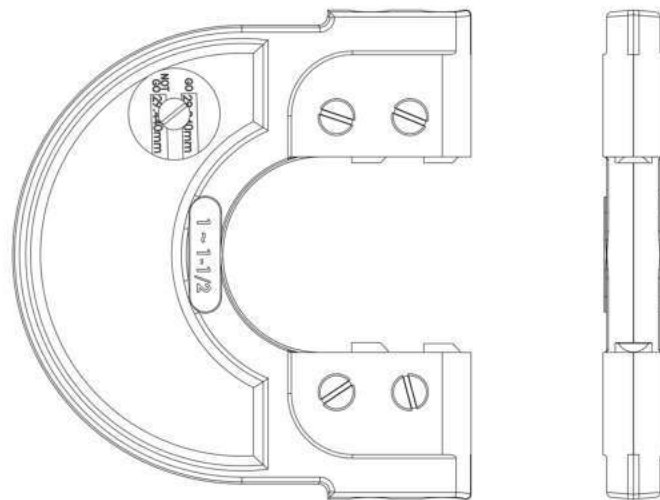


CMRA

CMRC	A	
	From	to
1	Ø 0	Ø 6
2	Ø 6	Ø 13
3	Ø 13	Ø 19
4	Ø 19	Ø 26
5	Ø 26	Ø 32
6	Ø 32	Ø 38
7	Ø 38	Ø 44
8	Ø 44	Ø 51
9	Ø 51	Ø 57
10	Ø 57	Ø 64
11	Ø 64	Ø 70
12	Ø 70	Ø 78
13	Ø 78	Ø 87
14	Ø 87	Ø 97
15	Ø 97	Ø 106
16	Ø 106	Ø 117
17	Ø 117	Ø 125
18	Ø 125	Ø 135
19	Ø 135	Ø 144
20	Ø 144	Ø 155

Possible up to Ø 295

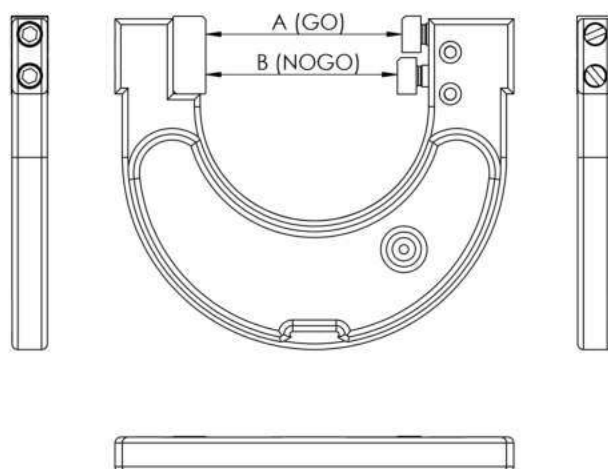
# A -Type Adjustable Snap Gauges



Frame Size	inch	mm
1	0 ~ 1/2	0 ~ 13
2	1/2 ~ 1	13 ~ 25
3	1 ~ 1-1/2	25 ~ 38
4	1-1/2 ~ 2	38 ~ 51
5	2 ~ 2-1/2	51 ~ 64
6	2-1/2 ~ 3	64 ~ 76
7	3 ~ 3-3/4	76 ~ 95
8	3-3/4 ~ 4-1/2	95 ~ 114
9	4-1/2 ~ 5-1/4	114 ~ 133
10	5-1/4 ~ 6	133 ~ 152
11	6 ~ 7	152 ~ 178
12	7 ~ 8	178 ~ 203
13	8 ~ 9	203 ~ 229

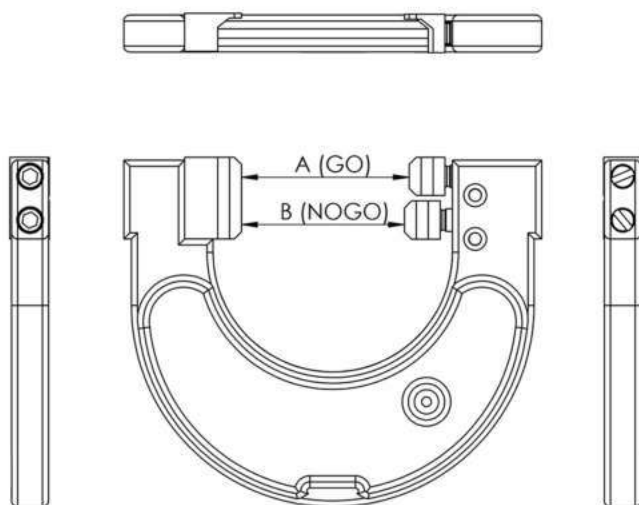


# C-Type Snap Gauges



Frame Size	Range		Frame Size	Range
1			7x	78 - 87
1x	0 - 6		8	87 - 97
2	6 - 13		8x	97 - 106
2x	13 - 19		9	106 - 116
3	19 - 26		9x	116 - 125
3x	26 - 32		10	125 - 135
4	32 - 38		10x	135 - 144
4x	38 - 44		11	144 - 156
5	44 - 51		11x	156 - 168
5x	51 - 57		12	168 - 181
6	57 - 64		12x	181 - 194
6x	64 - 70		13	194 - 206
7	70 - 78		13x	206 - 219

# U-Type Snap Gauges



Frame Size	Range		Frame Size	Range
			7x	67 - 76
			8	76 - 86
			8x	86 - 95
2x	0 - 6		9	95 - 105
3	6 - 13		9x	105 - 114
3x	13 - 19		10	114 - 124
4	19 - 26		10x	124 - 133
4x	26 - 32		11	133 - 146
5	32 - 38		11x	146 - 159
5x	38 - 44		12	159 - 171
6	44 - 51		12x	171 - 184
6x	51 - 67		13	184 - 197
7	67 - 76		13x	197 - 210

# Snap Gauges for Undercuts

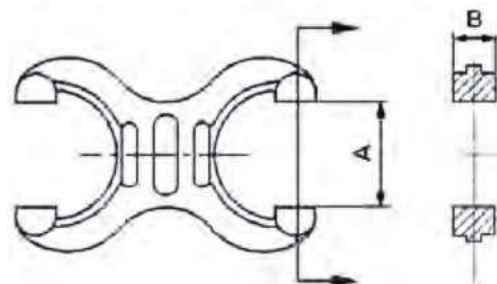


From	A	To	B
Ø 3		Ø 18	3
Ø 18		Ø 70	4
Ø 70		Ø 100	5
Ø 100		Ø 130	5
Ø 130		Ø 150	6
Ø 150		Ø 200	6
Ø 200		Ø 250	6

From	A	To	B
Ø 250		Ø 300	6
Ø 300		Ø 350	6
Ø 350		Ø 400	7
Ø 400		Ø 500	7
Ø 500		Ø 650	8
Ø 650		Ø 800	8

Type of anvils	A	B	C	D	F	G	H	I	J	K
Form or profile of anvils										

# Doubled Ended Snap Gauges



A		B
From	to	
Ø 3	Ø 6	6,5
Ø 6	Ø 10	7,5
Ø 10	Ø 14	7,5
Ø 14	Ø 18	8
Ø 18	Ø 21	8
Ø 21	Ø 27	8
Ø 27	Ø 32	9
Ø 32	Ø 38	9
Ø 38	Ø 43	10

A		B
From	to	
Ø 43	Ø 49	10
Ø 49	Ø 56	10
Ø 56	Ø 63	11,5
Ø 63	Ø 70	11,5
Ø 70	Ø 77	12
Ø 77	Ø 84	15
Ø 84	Ø 92	15
Ø 92	Ø 100	15

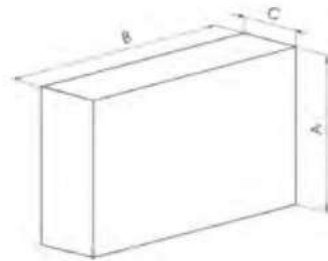
# Metric Trapezoidal Thread Gauges



Nominal Dia.	Pitch 1	Pitch 2	Pitch 3	Nominal Dia.	Pitch 1	Pitch 2	Pitch 3
Tr8	1.5			Tr42	3	7	10
Tr9	1.5	2		Tr44	3	7	12
Tr10	1.5	2		Tr46	3	8	12
Tr11	2	3		Tr48	3	8	12
Tr12	2	3		Tr50	3	8	12
Tr14	2	3		Tr52	3	8	12
Tr16	2	4		Tr55	3	9	14
Tr18	2	4		Tr60	3	9	14
Tr20	2	4		Tr65	4	10	16
Tr22	3	5	8	Tr70	4	10	16
Tr24	3	5	8	Tr75	4	10	16
Tr26	3	5	8	Tr80	4	10	16
Tr28	3	5	8	Tr85	4	12	18
Tr30	3	6	10	Tr90	4	12	18
Tr32	3	6	10	Tr95	4	12	18
Tr34	3	6	10	Tr100	4	12	20
Tr36	3	6	10	Tr110	4	12	20
Tr38	3	7	10	Tr120	6	14	22
Tr40	3	7	10	Tr300	12	24	44



# Individual & Boxed Slips



Measurement A in mm	In Increments of	Section B x C in mm	Steel class				Carbide class				Ceramic class						
			0	1	2	K	0	1	2	K	0	1	2	K			
0.5		30 x 9	X	X	X		•	•	•								
0,51 - 0,99	0.01	30 x 9					•	•	•								
0,991 - 0,999	0.001	30 x 9					•	•	•								
1.0005		30 x 9	X	X	X		•	•	•								
1,001 - 1,009	0.001	30 x 9	X	X	X		•	•	•								
1,00 - 1,49	0.01	30 x 9	X	X	X		•	•	•								
1,50 - 1,9	0.1	30 x 9	X	X	X		•	•	•								
2		30 x 9	X	X	X		•	•	•								
2,50 - 10	0.5	30 x 9	X	X	X		•	•	•								
10 - 25	0.5	35 x 9															
30,00 - 100,00	10	35 x 9	X	X	X		•	•	•								
125,00 - 250,00	25	35 x 9	X	X	X												
300 - 1000	100	35 x 9	X	X	X												

# Measuring Pins



A		B	C	D	G	H
From	To					
Ø 0.1	Ø 0.99	30	40	25	10	11,55
Ø 1	Ø 4	60	70	25	10	11,55
Ø 4.01	Ø 8	60	70	25	14	16,17
Ø 8.01	Ø 16	60	70	25	18	20,78
Ø 16.01	Ø 20	60	70	20	-	Ø 26



A		B	C	D	G	H
From	To					
Ø 0.1	Ø 0.99	30	40	25	10	11,55
Ø 1	Ø 4	60	70	25	10	11,55
Ø 4.01	Ø 8	60	70	25	14	16,17
Ø 8.01	Ø 16	60	70	25	18	20,78
Ø 16.01	Ø 20	60	70	20	-	Ø 26

## Boxed Measuring Pin Sets



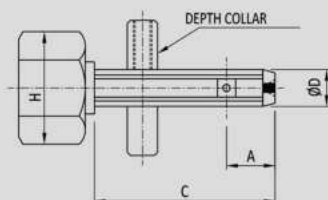
A		I	D	LG	L
Ø d					
Ø 0.10	Ø 0.30	2	4	32	34
Ø 0.30	Ø 0.50	3.5	4	32	35.5
Ø 0.5	Ø 1.00	5	4	32	37

## Short length Pins

# Air Plug Gauges

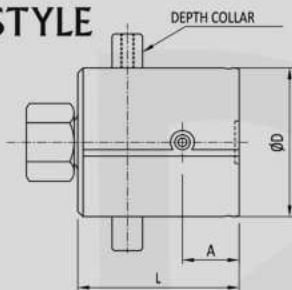
## DATA SHEET

### 'S' STYLE



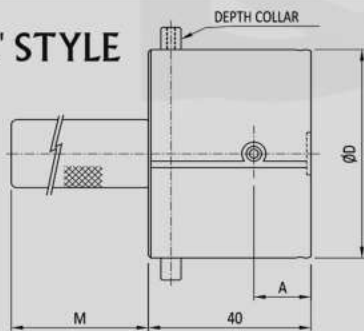
ø D mm	A		C		F**	G*	H	MIN RANGE	MAX RANGE
	THROUGH	BLIND	THROUGH	BLIND					
1.5-3.0 #	4.00	-	16.0	-	2.50	-	7.0	±0.005	±0.015
3.0-4.0	6.50	3.0	24.0	20.5	2.50	4.0	18.5		
4.0-6.0	9.00	3.0	31.0	25.0	2.50	4.0	18.5		

### 'M' STYLE



ø D mm	A		L	F** MOD1A/CL	G* MOD1A/CL	MIN RANGE	MAX RANGE
	THROUGH	BLIND					
6.0-13.0	13.0	4.0	38	4.5/3.5	6.5/6.0	±0.005	±0.030
13.0-20.0	15.0	4.5	40				
20.0-35.0							
35.0-60.0							

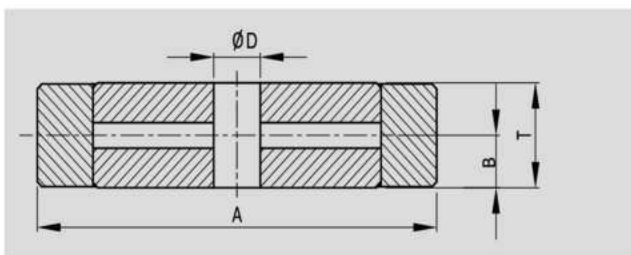
### 'L' STYLE



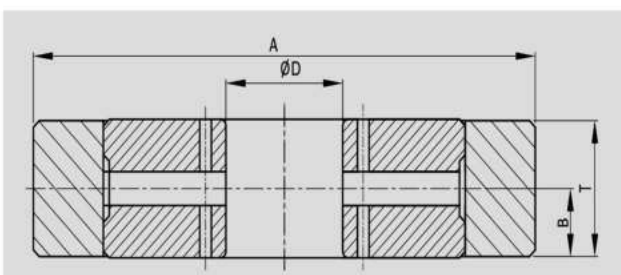
ø D mm	A		F** MOD1A/CL	G* MOD1A/CL	M	MIN RANGE	MAX RANGE
	THROUGH	BLIND					
60.0-100.0	15.0	4.5	4.5/3.5	6.5/6.0	100.00	±0.005	±0.030
100.0-150.0#					150.00	±0.010	
150.0-200.0#					200.00	±0.015	

# Air Ring Gauges & Setting Plug

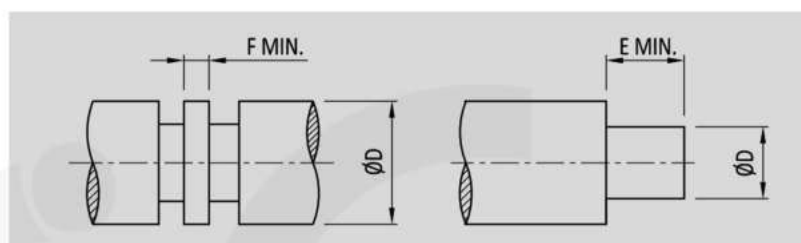
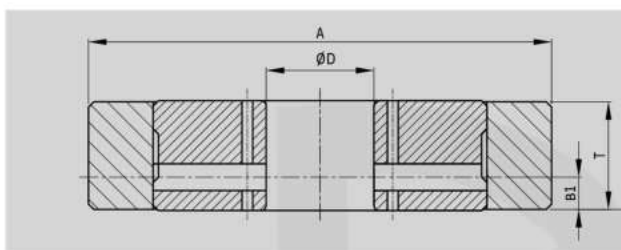
## AIR RING GAUGE DATA SHEET



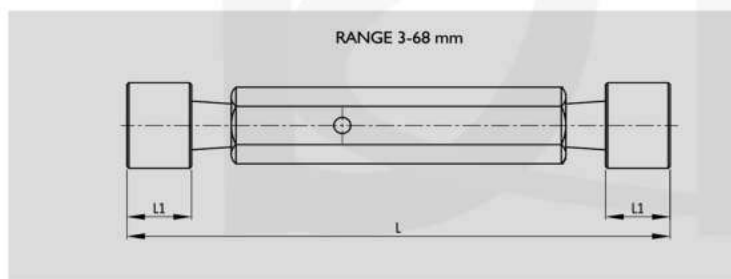
ø D mm	A	T	B	E	F	MIN RANGE	MAX RANGE
2.0 - 3.0	35.0	9.0	4.5	6.6	2.5	±0.005	80% OF SCALE
3.0 - 6.0	35.0	9.0	4.5	6.6	2.5	±0.005	



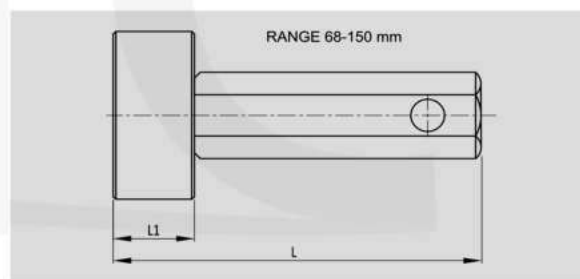
ø D mm	A	T	B	B1	E (OFFSET) MOD 1A/ CL	F (CENTRAL) MOD 1A/ CL	MIN RANGE	MAX RANGE
6.0-20.0	60.0	20.0	10.0	4.5	6.5/5.5	4.5/3.5	±0.005	80% OF SCALE
20.0-40.0	86.0						±0.010	
40.0-65.0	120.0						±0.015	
65.0-100.0	154.0						±0.020	
100.0-120.0	184.0						±0.020	
120.0-150.0	225.0						±0.020	



## SETTING PLUGS DATA SHEET



DIA RANGE	L	L1
3.0-6.0	75.0	8.0
6.0-10.0	110.0	20.0
10.0-14.0	119.0	
14.0-18.0	130.0	
18.0-24.0	144.0	
24.0-30.0	128.0	
30.0-40.0	160.0	
40.0-65.0	160.0	
65.0-68.0	160.0	

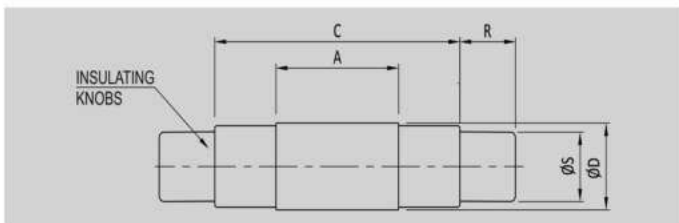


DIA RANGE	L	L1
68.0- 150.0	175.0	25.0

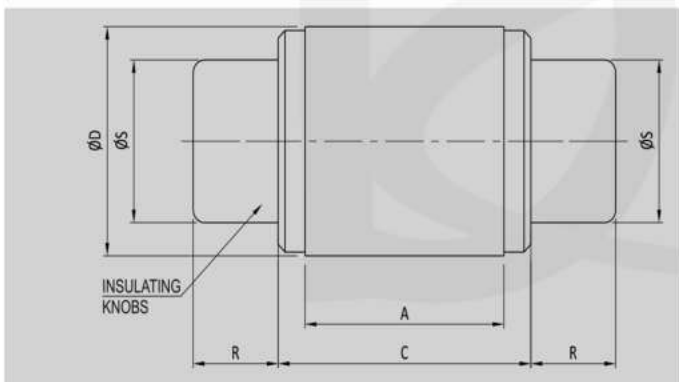
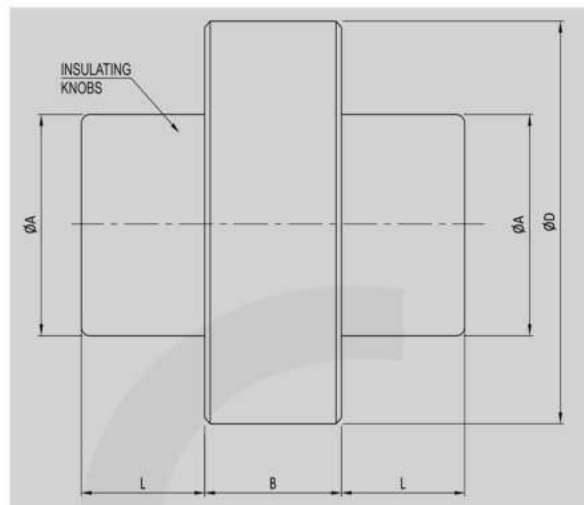
**Note:** For diameter below 3 mm pin type & collet design are applicable.

# Master Setting Disc

**RANGE: 3 - 200 mm**



ØD		A	C	R	ØS
ABOVE	UPTO & INCLUDING				
3.0	3.81	9.52	17.46	11.1	2.4
3.81	5.84	11.11	19.05	11.1	3.2
5.84	9.27	12.7	20.64	11.1	5.6



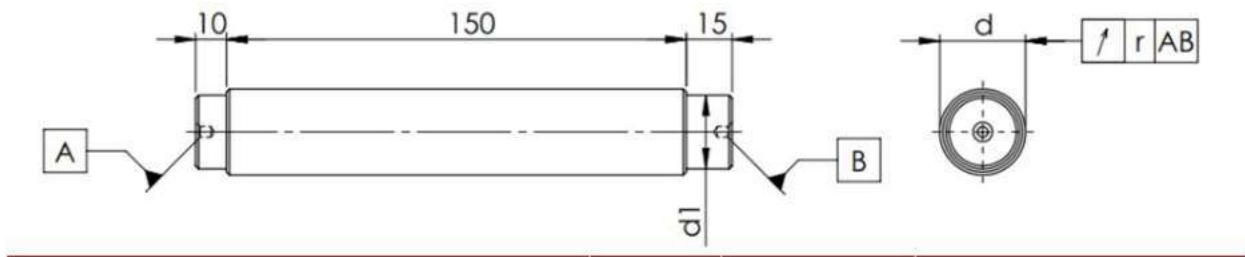
ØD		A	C	R	ØS
ABOVE	UPTO & INCLUDING				
9.27	12.95	14.29	22.22	12.7	8.7
12.95	20.96	15.88	23.81	12.7	12.7
20.96	28.83	17.46	25.4	15.9	19
28.83	38.35	20.64	28.58	15.9	25.4

Nominal Diameter Range (mm)	Size Tolerance (mm)	Roundness & Parallelism
3-20.96	±0.0008	0.0005
20.96-38.35	±0.0011	0.0007
38.35-63.75	±0.0015	0.0010
63.75-114.55	±0.0019	0.0012
114.55-165.35	±0.0024	0.0016
165.35-200	±0.0030	0.0020

ØD		B	ØA	L
ABOVE	UPTO & INCLUDING			
38.35	51.05	22.2	31.8	15.8
51.05	63.75	22.2	31.8	15.8
63.75	76.45	25.4	38.1	39.8
76.45	89.15	25.4	38.1	39.8
89.15	101.85	25.4	38.1	39.8
101.85	114.55	25.4	38.1	39.8
114.55	127.25	25.4	38.1	39.8
127.25	139.95	25.4	38.1	39.8
139.95	152.65	25.4	38.1	39.8
152.65	165.35	25.4	38.1	39.8
165.35	178.05	25.4	38.1	39.8
178.05	190.75	25.4	38.1	39.8
190.75	200.00	25.4	38.1	39.8

Above 200 mm upto 300 mm on request

# Taper Mandrels



NOMINAL DIA (d) In mm		d1	r	TAPER IN 'mm'
FROM	UP TO & INCLUDING			
-	3	2.5	0.003	0.04 To 0.05
3	4	2.8		
4	6	3.7		
6	8	5.7		
8	10	7.5		
10	14	9		
14	18	13		
18	22	16	0.004	
22	26	20		
26	30	2		
30	34	28		
34	38	28		
38	42	36		
42	50	36		

DIC – INDIA  
**DEDICATED IMPEX CO.**

D – 189, Industrial Focal Point, Patiala  
147003 Punjab, India  
info@dictoolsindia.com  
+91-95922-28222

DIC – UAE  
**DEDICATED IMPEX FZE**

B.C. 1303260, Ajman Free Zone,  
P.O. BOX: 47359, Ajman, UAE  
info@dictoolsindia.com  
(+971) 556721577

**DiCTOOLS**

*A Brand by Dedicated Impex Co.*