



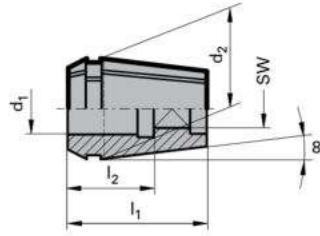
CNC TOOL HOLDERS

Product name	Page No.
Collets	03
Side Lock Holders	04-05
Stub Milling Arbors.....	06-08
Milling Reduction Socket	09
Drill Chuck Arbor	10
Quick Change Chuck	11
Quick Change Chuck Collet	12
Revolving Centre	13-22
Floating Holder	23-25
CNC Lathe Turret Sleeve	26-28
Dead Centre	29-32
Keyless Drill Chuck	33-34
Cylindrical Shank Collet Chuck.....	35-36
Drill Sleeve	37
Boring Head Set	38

Collets

Product information

- for clamping taps with square shank in Synchro tapping chucks or collet holders



Nominal size d_2	for shank \varnothing d_1 mm	square SW	l_1 mm	l_2 mm
ER16	4.5	3.4	27.5	18
ER16	5.5	4.3	27.5	18
ER16	6.0	4.9	27.5	18
ER16	7.0	5.5	27.5	18
ER16	8.0	6.2	27.5	22
ER20	4.0	3.0	31.5	15
ER20	4.5	3.4	31.5	18
ER20	5.5	4.3	31.5	18
ER20	6.0	4.9	31.5	18
ER20	7.0	5.5	31.5	18
ER20	8.0	6.2	31.5	22
ER20	9.0	7.0	31.5	22
ER20	10.0	8.0	31.5	25
ER20	11.0	9.0	31.5	25
ER25	4.5	3.4	34.0	18
ER25	5.5	4.3	34.0	18
ER25	6.0	4.9	34.0	18
ER25	7.0	5.5	34.0	18
ER25	8.0	6.2	34.0	22
ER25	9.0	7.0	34.0	22
ER25	10.0	8.0	34.0	25
ER25	11.0	9.0	34.0	25
ER25	12.0	9.0	34.0	25
ER32	4.0	3.0	40.0	15
ER32	4.5	3.4	40.0	18
ER32	5.5	4.3	40.0	18
ER32	6.0	4.9	40.0	18
ER32	7.0	5.5	40.0	18
ER32	8.0	6.2	40.0	22
ER32	9.0	7.0	40.0	22
ER32	10.0	8.0	40.0	25
ER32	11.0	9.0	40.0	25
ER32	12.0	9.0	40.0	25
ER32	14.0	11.0	40.0	25
ER32	16.0	12.0	40.0	25
ER32	18.0	14.5	40.0	25
ER32	20.0	16.0	40.0	28
ER40	7.0	5.5	46.0	18
ER40	8.0	6.2	46.0	22
ER40	9.0	7.0	46.0	22
ER40	10.0	8.0	46.0	25
ER40	11.0	9.0	46.0	25
ER40	12.0	9.0	46.0	25
ER40	14.0	11.0	46.0	25
ER40	16.0	12.0	46.0	25
ER40	18.0	14.5	46.0	25
ER40	20.0	16.0	46.0	28
ER40	22.0	18.0	46.0	28

Side Lock Holder

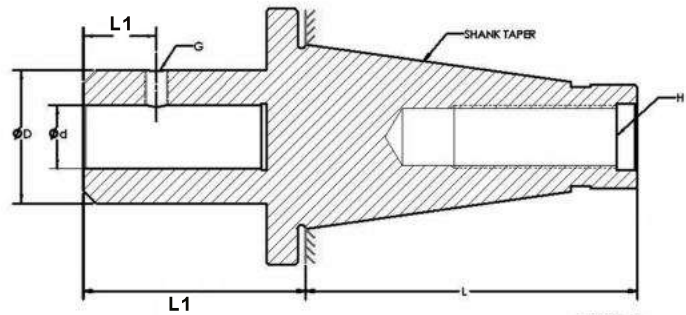


FIG-1

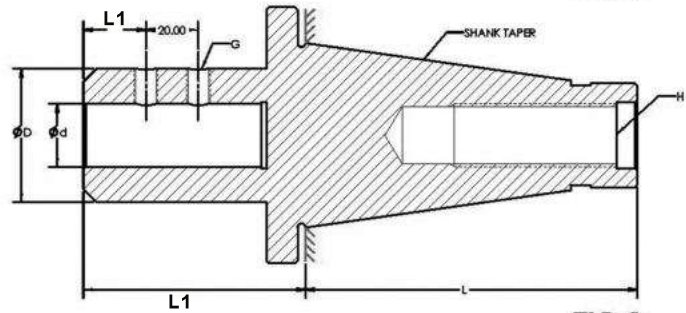
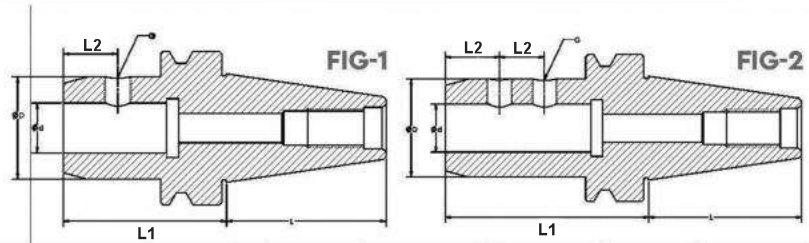


FIG-2

ISO Taaper

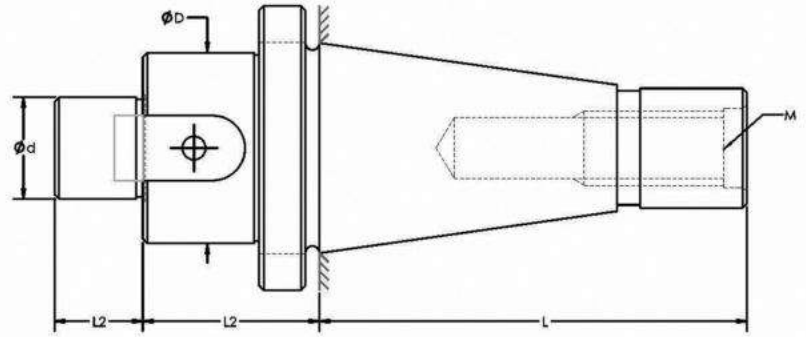
SHANK TAPER	SIZE	L	L1	L2	Ød	ØD	G	H	FIG.
ISO-30	12	68.4	57.5	16	12	35	M10	M12	1
ISO-30	16	68.4	57.5	23	16	40	M10	M12	1
ISO-30	20	68.4	72.5	25	20	50	M10	M12	2
ISO-30	25	68.4	87.5	25	25	50	M10	M12	2
ISO-30	32	68.4	94.5	30	32	60	M10	M12	2
ISO-30	40	68.4	94.5	30	40	60	M10	M12	2
ISO-40	12	93.4	59.5	16	12	35	M10	M16	1
ISO-40	16	93.4	59.5	23	16	40	M10	M16	1
ISO-40	20	93.4	64.5	25	20	50	M10	M16	2
ISO-40	25	93.4	76.5	25	25	50	M10	M16	2
ISO-40	32	93.4	81.5	30	32	60	M10	M16	2
ISO-40	40	93.4	96.5	30	40	60	M10	M16	2
ISO-50	12	126.8	63	16	12	35	M10	M24	1
ISO-50	16	126.8	63	23	16	40	M10	M24	1
ISO-50	20	126.8	68	25	20	50	M10	M24	2
ISO-50	25	126.8	80	25	25	50	M10	M24	2
ISO-50	32	126.8	80	30	32	60	M10	M24	2
ISO-50	40	126.8	80	30	40	60	M10	M24	2

Side Lock Holder



SHANK TAPER	SIZE	Ød	ØD	L	L1	L2	L3	G	FIG.
BT-30	12 X 50	12	42	48.4	50	22	-	M10	1
BT-30	16 X 63	16	48	48.4	63	23	-	M16	1
BT-30	20 X 63	20	52	48.4	63	24	-	M16	1
BT-30	25 X 80	25	65	48.4	80	24	-	M12	1
BT-30	32 X 90	32	65	48.4	90	24	-	M16	1
BT-40	12 X 63	12	42	65.4	63	22	-	M10	1
BT-40	16 X 63	16	48	65.4	63	23	-	M12	1
BT-40	16 X 120	16	48	65.4	120	23	-	M12	1
BT-40	20 X 63	20	52	65.4	63	24	-	M16	1
BT-40	20 X 120	20	52	65.4	120	24	-	M16	1
BT-40	25 X 90	25	50	65.4	90	24	25	M12	2
BT-40	25 X 150	25	62	65.4	150	24	25	M12	2
BT-40	32 X 100	32	62	65.4	100	24	28	M16	2
BT-40	32 X 150	32	62	65.4	150	24	28	M16	2
BT-40	40 X 100	40	62	65.4	100	25	28	M16	2
BT-40	40 X 150	40	62	65.4	150	25	28	M16	2
BT-50	16 X 85	16	48	101.8	85	24	-	M12	1
BT-50	16 X 150	16	48	101.8	150	24	-	M12	1
BT-50	16 X 200	16	48	101.8	200	24	-	M12	1
BT-50	20 X 100	20	52	101.8	100	24	-	M16	1
BT-50	20 X 150	20	52	101.8	150	24	-	M16	1
BT-50	20 X 200	20	52	101.8	200	24	-	M16	1
BT-50	25 X 100	25	62	101.8	100	24	25	M16	2
BT-50	25 X 150	25	62	101.8	150	24	25	M16	2
BT-50	25 X 200	25	62	101.8	200	24	25	M16	2
BT-50	32 X 105	32	62	101.8	105	24	28	M16	2
BT-50	32 X 150	32	62	101.8	150	24	28	M16	2
BT-50	32 X 200	32	62	101.8	200	24	28	M16	2
BT-50	40 X 105	40	62	101.8	105	25	28	M16	2
BT-50	40 X 150	40	62	101.8	150	25	28	M16	2
BT-50	40 X 200	40	62	101.8	200	25	28	M16	2
BT-50	50 X 100	50	62	101.8	100	25	28	M16	2

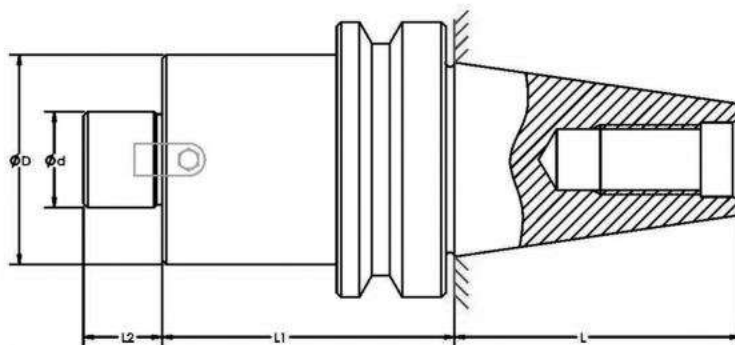
Stub Milling Arbour



ISO Taper

SHANK TAPER	SIZE	L	L1	L2	Ød	ØD	M
ISO-30	16	68.4	34.6	17	16	32	M12
ISO-30	22	68.4	34.6	19	22	40	M12
ISO-30	27	68.4	34.6	21	27	48	M12
ISO-40	16	93.4	34.6	17	16	32	M16
ISO-40	22	93.4	34.6	19	22	40	M16
ISO-40	27	93.4	34.6	21	27	48	M16
ISO-40	32	93.4	51.6	24	32	58	M16
ISO-50	16	126.8	40.2	17	16	32	M24
ISO-50	22	126.8	40.2	19	22	40	M24
ISO-50	27	126.8	55.2	21	27	48	M24
ISO-50	32	126.8	55.2	24	32	58	M24
ISO-50	40	126.8	55.2	27	40	70	M24

Stub Milling Arbour

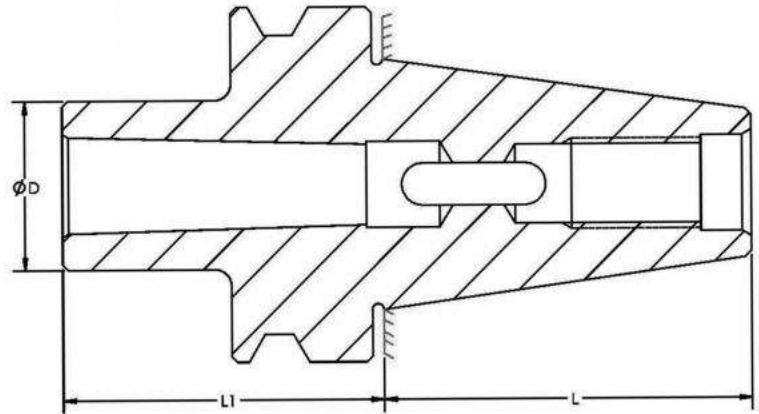


SHANK TAPER	SIZE	Ød	L1	L	L2	ØD
BT-30	16X40	16	40	48.4	17	35
BT-30	16X80	16	80	48.4	17	35
BT-30	22X45	22	45	48.4	19	45
BT-30	22X90	22	90	48.4	19	45
BT-30	27X45	27	45	48.4	21	52
BT-30	27X90	27	90	48.4	21	52
BT-30	32X90	32	90	48.4	21	58
BT-40	16X60	16	60	65.4	17	35
BT-40	16X100	16	100	65.4	17	35
BT-40	16X150	16	150	65.4	17	35
BT-40	16X200	16	200	65.4	17	35
BT-40	22X50	22	50	65.4	19	45
BT-40	22X100	22	100	65.4	19	45
BT-40	22X150	22	150	65.4	19	45
BT-40	22X200	22	200	65.4	19	45
BT-40	22X250	22	250	65.4	19	45
BT-40	22X300	22	300	65.4	19	45
BT-40	22X350	22	350	65.4	19	45
BT-40	27X60	27	60	65.4	21	52
BT-40	27X100	27	100	65.4	21	52

Continue...

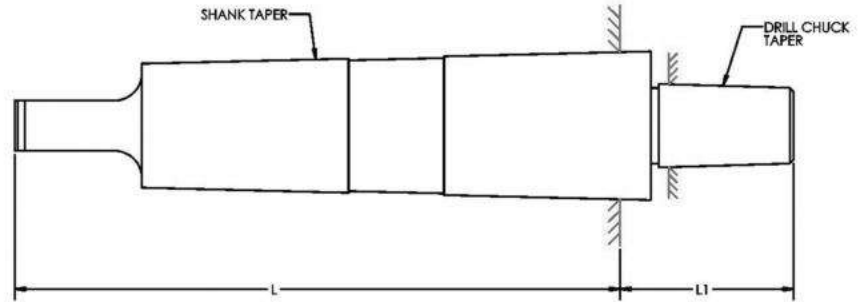
BT-40	27X150	27	150	65.4	21	52
BT-40	27X200	27	200	65.4	21	52
BT-40	27X250	27	250	65.4	21	52
BT-40	27X300	27	300	65.4	21	52
BT-40	32X70	32	70	65.4	24	58
BT-40	32X100	32	100	65.4	24	58
BT-40	32X150	32	150	65.4	24	58
BT-40	40X70	40	70	65.4	27	63
BT-40	40X100	40	100	65.4	27	63
BT-40	40X150	40	150	65.4	27	63
BT-50	16X60	16	60	101.8	17	35
BT-50	16X100	16	100	101.8	17	35
BT-50	16X150	16	150	101.8	17	35
BT-50	16X200	16	200	101.8	17	35
BT-50	22X60	22	60	101.8	19	45
BT-50	22X100	22	100	101.8	19	45
BT-50	22X150	22	150	101.8	19	45
BT-50	22X200	22	200	101.8	19	45
BT-50	22X250	22	250	101.8	19	45
BT-50	22X300	22	300	101.8	19	45
BT-50	27X60	27	60	101.8	21	52
BT-50	27X100	27	100	101.8	21	52
BT-50	27X150	27	150	101.8	21	52
BT-50	27X200	27	200	101.8	21	52
BT-50	27X250	27	250	101.8	21	52
BT-50	27X300	27	300	101.8	21	52
BT-50	32X75	32	75	101.8	24	58
BT-50	32X100	32	100	101.8	24	58
BT-50	32X150	32	150	101.8	24	58
BT-50	32X200	32	200	101.8	24	58
BT-50	32X250	32	250	101.8	24	58
BT-50	40X70	40	70	101.8	27	70
BT-50	40X100	40	100	101.8	27	70
BT-50	40X150	40	150	101.8	27	70
BT-50	40X200	40	200	101.8	27	70
BT-50	40X250	40	250	101.8	27	70

Milling Reduction Socket



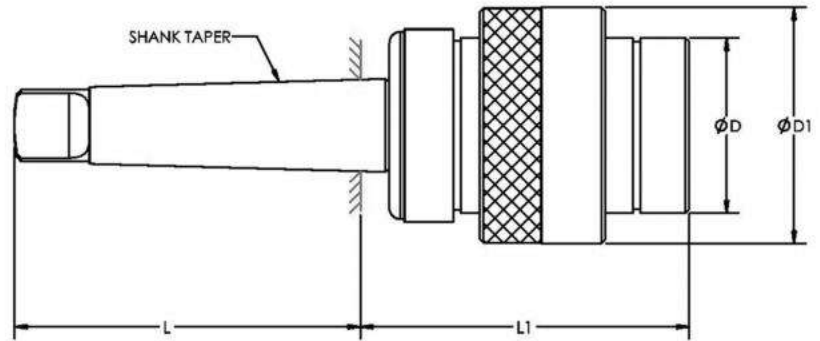
SHANK TAPER	SIZE	TAPER	L1	L	ØD
BT-30	MT-1X45	MT-1	45	48.4	25
BT-30	MT-2X60	MT-2	60	48.4	32
BT-30	MT-3X75	MT-3	75	48.4	40
BT-40	MT-1X45	MT-1	45	65.4	25
BT-40	MT-2X60	MT-2	60	65.4	32
BT-40	MT-3X75	MT-3	75	65.4	40
BT-40	MT-4X95	MT-4	95	65.4	48
BT-50	MT-1X45	MT-1	45	101.8	25
BT-50	MT-1X120	MT-1	120	101.8	25
BT-50	MT-2X45	MT-2	45	101.8	32
BT-50	MT-2X135	MT-2	135	101.8	32
BT-50	MT-3X60	MT-3	60	101.8	40
BT-50	MT-3X155	MT-3	155	101.8	40
BT-50	MT-4X85	MT-4	85	101.8	48
BT-50	MT-4X180	MT-4	180	101.8	48
BT-50	MT-5X100	MT-5	100	101.8	48
BT-50	MT-5X220	MT-5	220	101.8	48

Drill Chuck Arbour



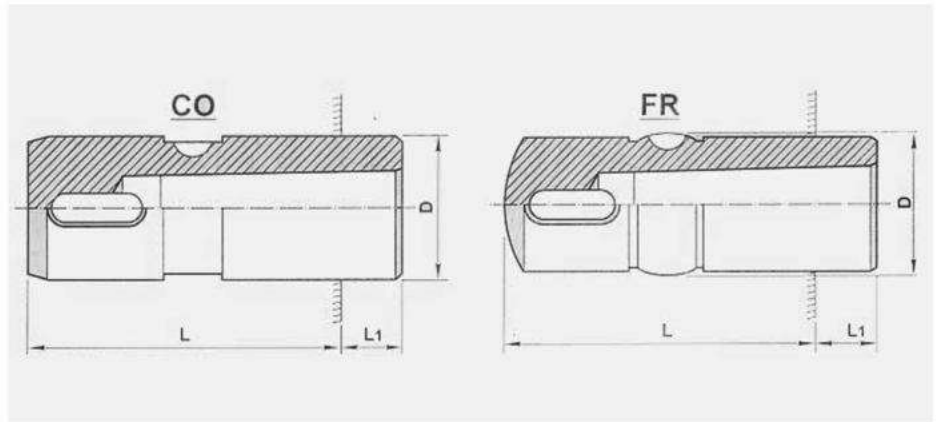
SIZE	SHANK TAPER	DRILL CHUCK TAPER	L	L1	WEIGHT KG.
1/4"	MT-1	JT-1	62	24	0.062
3/8"	MT-1	JT-2	62	33	0.085
1/2"	MT-1	JT-6	62	32	0.095
1/4"	MT-2	JT-1	75	25	0.155
3/8"	MT-2	JT-2	75	32	0.155
1/2"	MT-2	JT-6	75	33	0.210
3/8"	MT-2	JT-3	75	41	0.210
1/2"	MT-3	JT-6	94	33	0.317
3/8"	MT-3	JT-3	94	41	0.360
1/2"	MT-4	JT-6	117.5	34.5	0.635
3/8"	MT-4	JT-3	117.5	42.5	0.680
1/2"	MT-5	JT-6	149.5	34.5	1.645
3/8"	MT-5	JT-3	149.5	42.5	1.690

Quick Change Chuck



MODEL NO.	L	L1	BORE SIZE	ØD	ØD1	SUITABLE FOR COLLETS / FR	WEGHT KG.
MT-2	75	75	26	36	48	CO-21,22/FR-21,22	0.730
MT-3	94	86	34	46	61	CO-31,32,33/FR-31,32,33	1.400
MT-4	117.5	97.5	46	62	85	CO-41,42,43,44/FR-41,42,43,44	2.900
MT-5	149.5	122.5	60	80	104	CO-51,52,53,54,55/FR-51,52,53,54,55	9.100

Quick Change Chucks Collets

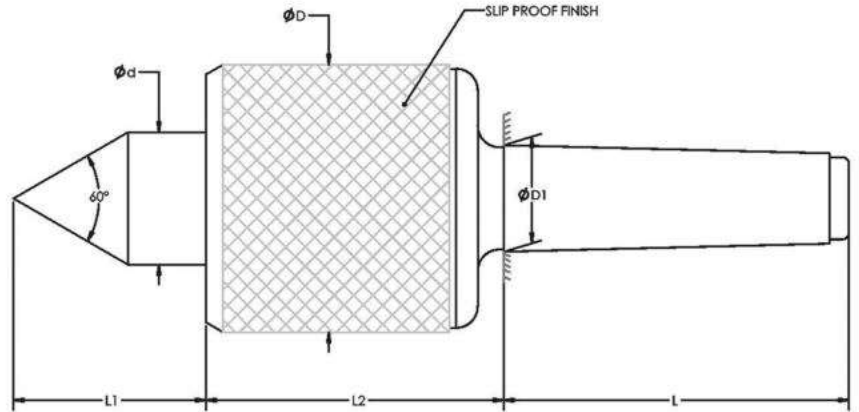


Collet Model No.	FR. Holder Model No.	L mm	L1 mm	D mm	Suitable for Chuck	Internal Taper
CO - 21	FR - 21	60	18	26	MT - 2	MT - 1
CO - 22	FR - 22	60	30	26	MT - 2	MT - 2
CO - 31	FR - 31	65	15	34	MT - 3	MT - 1
CO - 32	FR - 32	65	25	34	MT - 3	MT - 2
CO - 33	FR - 33	65	43	34	MT - 3	MT - 3
CO - 41	FR - 41	76	44	46	MT - 4	MT - 1
CO - 42	FR - 42	76	19	46	MT - 4	MT - 2
CO - 43	FR - 43	76	35	46	MT - 4	MT - 3
CO - 44	FR - 44	76	59	46	MT - 4	MT - 4
CO - 51	-	98	46	60	MT - 5	MT - 1
CO - 52	-	98	57	60	MT - 5	MT - 2
CO - 53	-	98	27	60	MT - 5	MT - 3
CO - 54	-	98	42	60	MT - 5	MT - 4
CO - 55	-	98	75	60	MT - 5	MT - 5

Features

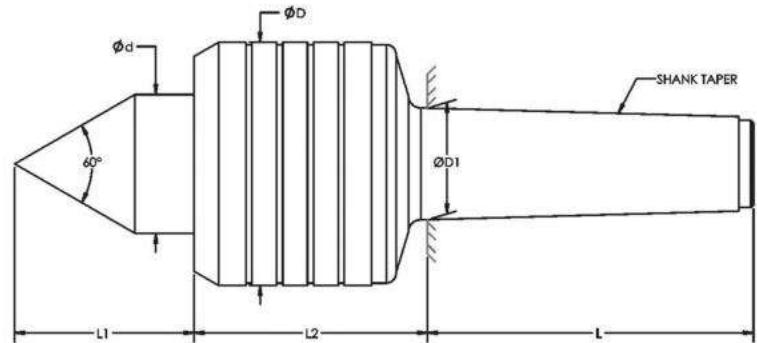
- ✔ Made from 20MnCr5. Case Hardened to 55-58 HRc.
- ✔ Precision ground externally & internally.
- ✔ Concentricity within 0.015 mm.

Revolving Center (Standard)



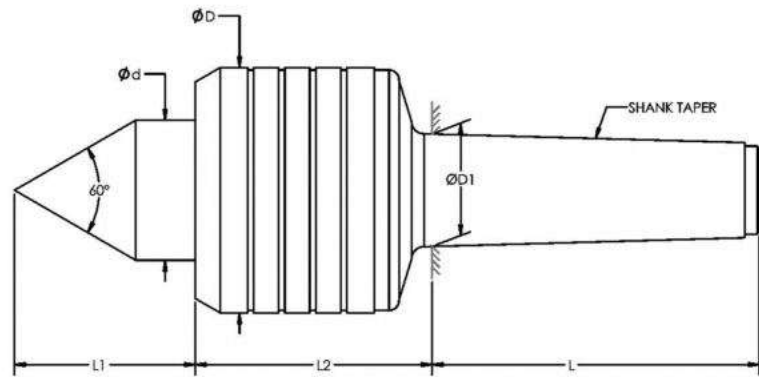
SHANK TAPER	ϕd	ϕD	ϕD_1	L1	L2	L	MAX JOB WT. KG.	CONC. ERROR MM
MT-1	25	45	12.065	30	46.5	53.5	25	0.015
MT-2	25	52	17.780	40	59	64	50	0.015
MT-3	30	62	23.825	44	68	81	75	0.015
MT-4	33	64	31.267	48	70.5	102.5	100	0.015
MT-5	40	70	44.399	52	78.5	129.5	150	0.015
MT-6	54	105	63.348	71	90	182	200	0.015

Revolving Center (Heavy Duty)



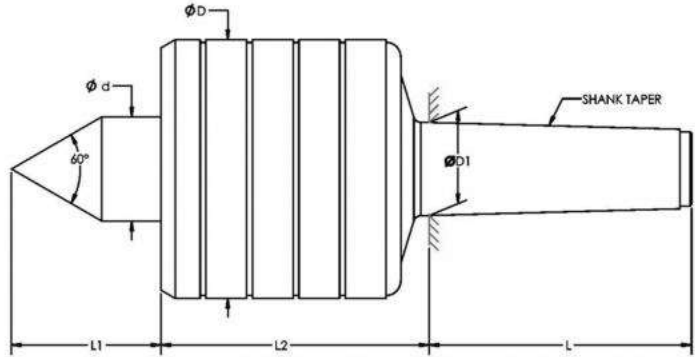
MT	ϕd	ϕD	$\phi D1$	L1	L2	L	MAX JOB WT. KG.	CONC. ERROR MM
MT-3	33	68	23.82	50	72	81	350	0.015
MT-4	34	70	31.26	50	80.5	102.5	500	0.015
MT-5	40	79	44.39	54	80.5	129.5	1250	0.015
MT-6	65	122	63.34	81	130	182	2000	0.015

Revolving Center (Extra Heavy Duty)



MT	Ød	ØD	ØD1	L1	L2	L	MAX JOB WT. KG.	CONC. ERROR MM
MT-5	56	98	44.39	72	97.5	129.5	1750	0.015
MT-6	75	138	63.34	100	158	182	4000	0.015
MT-7	75	138	83.05	100	150	256	5000	0.015

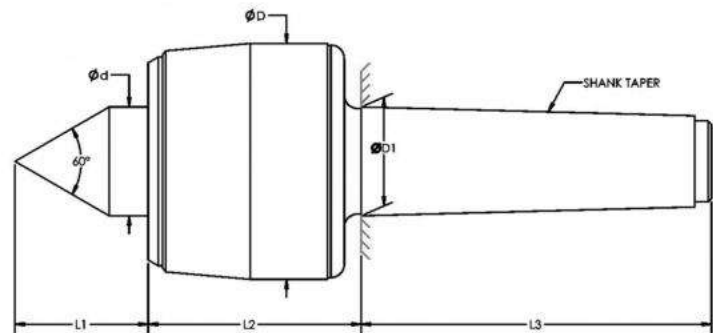
Revolving Center (JUMBO)



MT	ϕd	ϕD	$\phi D1$	L1	L2	L	MAX JOB WT. KG.	CONC. ERROR MM
MT-6	80	178	63.34	100	175	182	5000	0.015
MT-7	80	178	83.05	100	175	255	6500	0.015

Revolving Center

CNC - High Speed Stub Point

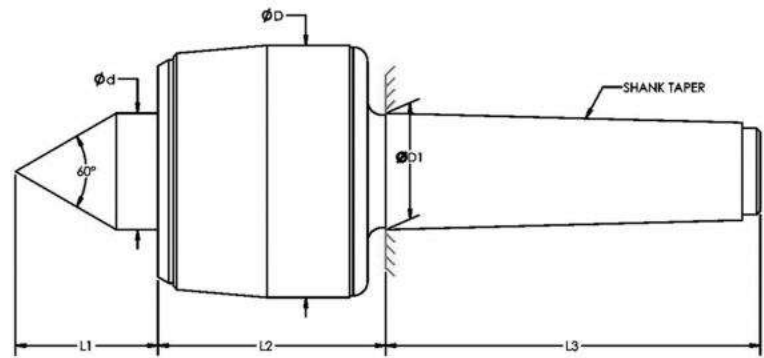


MT	ϕd	ϕD	$\phi D1$	L1	L2	L	MAX JOB WT. KG.	CONC. ERROR MM	MAX. RPM
MT-3	25	58	23.82	32	58	81	500	0.005	5000
MT-4	32	70	31.26	40	60	102.5	800	0.005	3800
MT-5	38	87	44.39	46	74	129.5	2000	0.005	3000
MT-6	55	123	63.34	60	114	182	3500	0.01	2600

ALSO AVAILABLE CARBIDE TIPPED.

Revolving Center

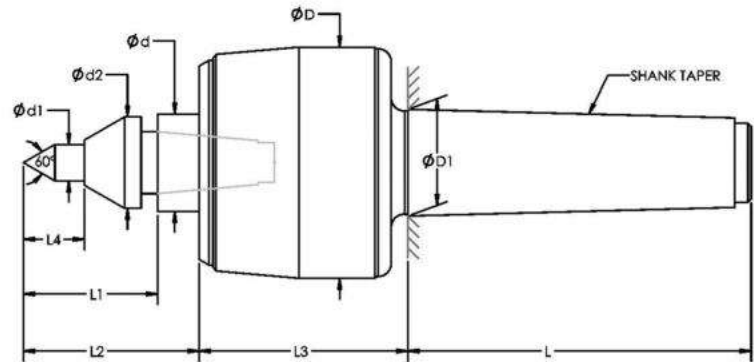
CNC - High Speed Extended Point



MT	$\phi d1$	ϕd	ϕD	$\phi D1$	L1	L2	L	MAX JOB WT. KG.	CONC. ERROR MM	MAX. RPM
MT-3	13	25	58	23.82	43	58	81	400	0.005	5000
MT-4	20	32	70	31.26	55	60.5	102.5	500	0.005	3800
MT-5	21	38	87	44.39	56	74.5	129.5	1200	0.005	3000
MT-6	25	55	123	63.34	94	114	182	2500	0.010	2600

Revolving Center

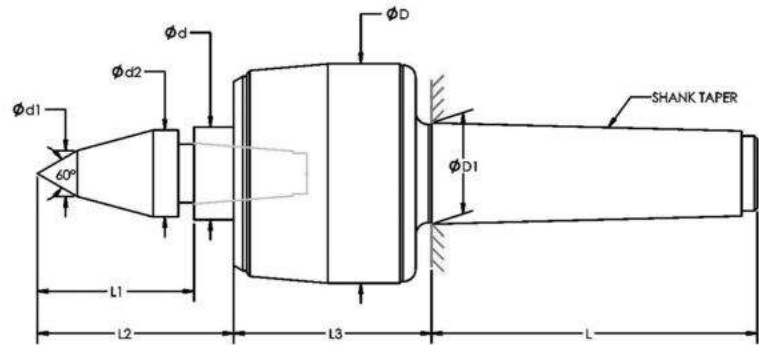
CNC - Interchangeable Point Heavy Duty R Model Profile Point



MT	$\phi d1$	$\phi d2$	ϕd	ϕD	$\phi D1$	L1	L2	L3	L4	L	MAX JOB WT. KG.	CONC. ERROR MM	MAX. RPM
MT-3	11	24	24	58	23.82	36	40	58	20	81	50	0.010	5000
MT-4	11	27	30	70	31.26	40	52	60.5	18	102.5	125	0.010	3800
MT-5	16	33	38	87	44.39	50	55	74.5	30	129.5	200	0.010	3000

Revolving Center

CNC - Interchangeable Point Heavy Duty R Model Extended Point

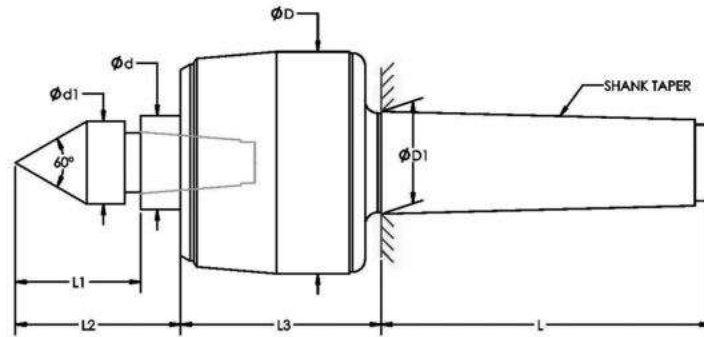


MT	$\phi d1$	$\phi d2$	ϕd	ϕD	$\phi D1$	L1	L2	L3	L	MAX JOB WT. KG.	CONC. ERROR MM	MAX. RPM
MT-3	14	24	24	58	23.82	42	46	58	81	100	0.010	5000
MT-4	14	27	30	70	31.26	50	62	60.5	102.5	200	0.010	3800
MT-5	18	32	38	87	44.39	53	58	74.5	129.5	400	0.010	3000

ALSO AVAILABLE CARBIDE TIPPED.

CNC Revolving Center

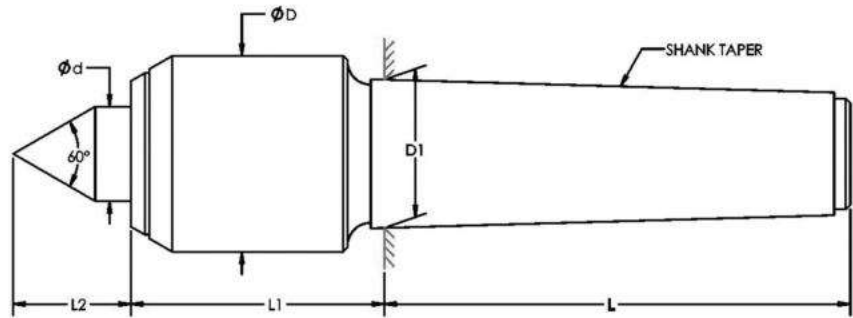
CNC - Interchangeable Point Heavy Duty R Model Stub Point



MT	ϕd_1	ϕd	ϕD	ϕD_1	L1	L2	L3	L	MAX JOB WT. KG.	CONC. ERROR MM	MAX. RPM
MT-3	24	24	58	23.82	36	40	58	81	150	0.010	5000
MT-4	26	30	70	31.26	40	52	60.5	102.5	250	0.010	3800
MT-5	32	38	87	44.39	50	55	74.5	129.5	650	0.010	3000

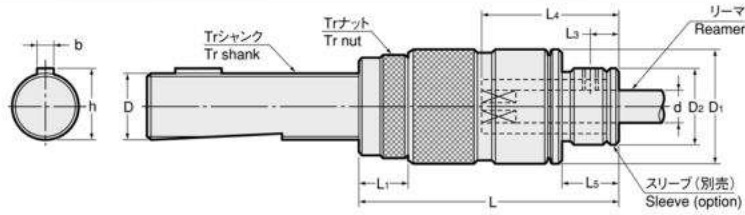
Revolving Center CNC

Medium Duty-Slim Line



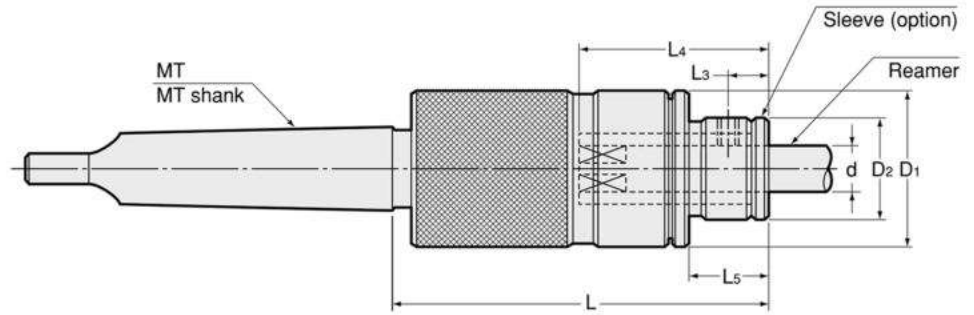
MT	ϕd	ϕD	$\phi D1$	L	L1	L2	MAX JOB WT. KG.	CONC. ERROR MM	MAX. RPM
MT-4	24	52	31.267	102.5	58	35	800	0.005	6300
MT-5	24	58	44.399	129.5	58	35	1600	0.010	4300

Floating Holder



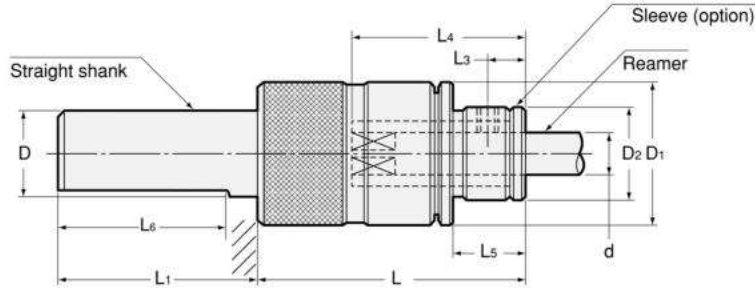
d Reamer shank	Sleeve size	Float		D	b	h	D1	L	L1	L3	L5	D2	kg
		Radial	Angular										
3.00 ~ 8.00	FHS0	0.4	1°	16	5	17.2	28	62~80	12	7	15	19.5	0.3
3.00 ~ 8.00	FHS0	0.4	1°	16	3	17.3	28	62~80	12	7	15	19.5	0.3
3.00 ~ 8.00	FHS0	0.4	1°	16	4	17.5	28	62~80	12	7	15	19.5	0.3
3.00 ~ 8.00	FHS0	0.4	1°	19	5	21.1	28	62~80	12	7	15	19.5	0.3
3.00 ~ 8.00	FHS0	0.4	1°	20	5	21.2	28	62~75	12	7	15	19.5	0.3
4.00 ~ 10.00	FHS1	0~0.4	0~1° Adjustable	16	5	17.2	36	69~87	12	8	19	23	0.4
4.00 ~ 10.00	FHS1	0~0.4	0~1° Adjustable	16	3	17.3	36	69~87	12	8	19	23	
4.00 ~ 10.00	FHS1	0~0.4	0~1° Adjustable	16	4	17.5	36	69~87	12	8	19	23	0.4
4.00 ~ 10.00	FHS1	0~0.4	0~1° Adjustable	19	5	21.1	36	66~84	12	8	19	23	0.4
4.00 ~ 10.00	FHS1	0~0.4	0~1° Adjustable	20	5	21.2	36	66~79	12	8	19	23	0.4
4.00 ~ 10.00	FHS1	0~0.4	0~1° Adjustable	22	5	24.1	36	66~84	12	8	19	23	0.5
4.00 ~ 10.00	FHS1	0~0.4	0~1° Adjustable	24	5	26.1	36	66~94	12	8	19	23	0.6
4.00 ~ 10.00	FHS1	0~0.4	0~1° Adjustable	25	6	26.5	36	66~84	12	8	19	23	0.6
8.10 ~ 20.00	FHS2	0~0.6	0~1° Adjustable	26	5	28.1	55	87~110	12	14	25	38	1.1
8.10 ~ 20.00	FHS2	0~0.6	0~1° Adjustable	26	7	28.6	55	87~110	12	14	25	38	1.1
8.10 ~ 20.00	FHS2	0~0.6	0~1° Adjustable	28	6	29.5	55	87~118	12	14	25	38	1.2
8.10 ~ 20.00	FHS2	0~0.6	0~1° Adjustable	30	7	33.1	55	89~118	14	14	25	38	1.3
8.10 ~ 20.00	FHS2	0~0.6	0~1° Adjustable	32	8	33.5	55	89~115	14	14	25	38	1.4
8.10 ~ 20.00	FHS2	0~0.6	0~1° Adjustable	35	7	38.1	55	89~125	14	14	25	38	1.6
8.10 ~ 20.00	FHS2	0~0.6	0~1° Adjustable	36	8	37.5	55	89~127	14	14	25	38	1.6
8.10 ~ 20.00	FHS2	0~0.6	0~1° Adjustable	36	10	39.6	55	89~127	14	14	25	38	1.6

Continue...



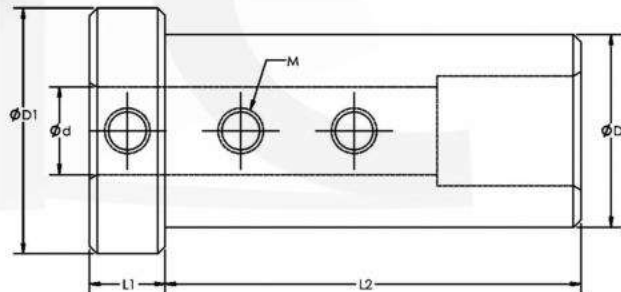
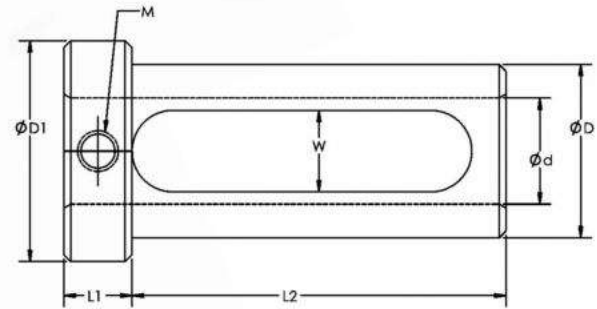
d Reamer shank	Sleeve size	Float		D1	L	L3	L5	D2	kg
		Radial	Angular						
3.00 ~ 8.00	FHS0	0.4	1°	28	65	7	15	19.5	0.3
3.00 ~ 8.00	FHS0	0.4	1°	28	65	7	15	19.5	0.4
4.00 ~ 10.00	FHS1	0 ~ 0.4 Adjustable	0 ~ 1°	36	70	8	19	23	0.4
4.00 ~ 10.00	FHS1	0 ~ 0.4 Adjustable	0 ~ 1°	36	70	8	19	23	0.5
8.10 ~ 20.00	FHS2	0 ~ 0.6 Adjustable	0 ~ 1°	55	95	14	25	38	1.2
8.10 ~ 20.00	FHS2	0 ~ 0.6 Adjustable	0 ~ 1°	55	95	14	25	38	1.3

Continue...



d Reamer shank	Sleeve size	Float		D	D1	L	L1	L3	L5	L6	D2	kg
		Radial	Angular									
3.00 ~ 8.00	FHS0	0.4	1°	15.875	28	50	50	7	15	40	19.5	0.2
3.00 ~ 8.00	FHS0	0.4	1°	16	28	50	50	7	15	40	19.5	0.2
3.00 ~ 8.00	FHS0	0.4	1°	19.05	28	50	50	7	15	40	19.5	0.2
3.00 ~ 8.00	FHS0	0.4	1°	20	28	50	50	7	15	40	19.5	0.3
4.00 ~ 10.00	FHS1	0 ~ 0.4	0 ~ 1° Adjustable	15.875	36	54	50	8	19	40	23	0.3
4.00 ~ 10.00	FHS1	0 ~ 0.4	0 ~ 1° Adjustable	16	36	54	50	8	19	40	23	0.3
4.00 ~ 10.00	FHS1	0 ~ 0.4	0 ~ 1° Adjustable	19.05	36	54	50	8	19	40	23	0.4
4.00 ~ 10.00	FHS1	0 ~ 0.4	0 ~ 1° Adjustable	20	36	54	50	8	19	40	23	0.4
4.00 ~ 10.00	FHS1	0 ~ 0.4	0 ~ 1° Adjustable	25	36	54	50	8	19	40	23	0.4
4.00 ~ 10.00	FHS1	0 ~ 0.4	0 ~ 1° Adjustable	25.4	36	54	50	8	19	40	23	0.4
8.10 ~ 20.00	FHS2	0 ~ 0.6	0 ~ 1° Adjustable	25	55	75	50	14	25	40	38	0.9
8.10 ~ 20.00	FHS2	0 ~ 0.6	0 ~ 1° Adjustable	25.4	55	75	50	14	25	40	38	0.9
8.10 ~ 20.00	FHS2	0 ~ 0.6	0 ~ 1° Adjustable	32	55	75	70	14	25	55	38	1.1
8.10 ~ 20.00	FHS2	0 ~ 0.6	0 ~ 1° Adjustable	35	55	75	70	14	25	55	38	1.2
8.10 ~ 20.00	FHS2	0 ~ 0.6	0 ~ 1° Adjustable	38.1	55	75	70	14	25	55	38	1.3
8.10 ~ 20.00	FHS2	0 ~ 0.6	0 ~ 1° Adjustable	40	55	75	70	14	25	55	38	1.4

CNC Lathe Turret Sleeve



Turret Sleeve

	∅D	∅d	∅D1	W	L1	L2	M	FIG.
16x8	16	8	22	-	10	55	M6	2
16X10	16	10	22	-	10	55	M6	2
20X8	20	8	26	-	10	55	M6	2
20X10	20	10	26	-	10	55	M6	2
20X12	20	12	26	-	10	55	M6	2
25X8	25	8	32	-	10	55	M6	2
25X10	25	10	32	-	10	55	M6	2
25X12	25	12	32	-	10	55	M6	2
25X16	25	16	32	12	10	55	M6	1
32X8	32	8	39	-	10	55	M6	2
32X10	32	10	39	-	10	55	M6	2
32X12	32	12	39	-	10	55	M6	2
32X16	32	16	39	12	10	55	M6	1
32X20	32	20	39	12	10	55	M6	1
32X25	32	25	39	12	10	55	M6	1
40X8	40	8	48	-	10	80	M6	2
40X10	40	10	48	-	10	80	M6	2
40X12	40	12	48	-	10	80	M6	2
40X16	40	16	48	12	10	80	M6	1
40X20	40	20	48	12	10	80	M6	1
40X25	40	25	48	12	10	80	M6	1
40X32	40	32	48	12	10	80	M6	1
50X8	50	8	58	-	10	85	M6	2
50X10	50	10	58	-	10	85	M6	2
50X12	50	12	58	-	10	85	M6	2
50X16	50	16	58	12	10	85	M6	1
50X20	50	20	58	12	10	85	M6	1
50X25	50	25	58	12	10	85	M6	1
50X32	50	32	58	12	10	85	M6	1
50X40	50	40	58	12	10	85	M6	1

Turret Sleeve



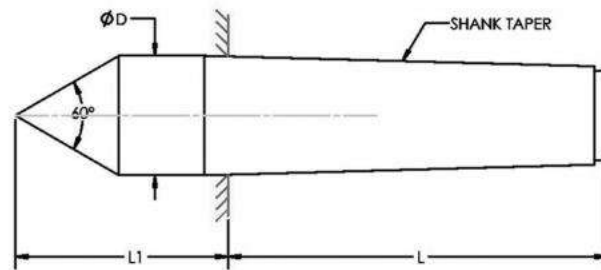
Morse Taper Bore

OD	ID (MT)	LENGTH
Ø25	MT-1	70
Ø25	MT-2	80
Ø32	MT-1	80
Ø32	MT-2	85
Ø32	MT-3	100
Ø40	MT-1	85
Ø40	MT-2	85
Ø40	MT-3	90
Ø40	MT-4	120
Ø50	MT-1	90
Ø50	MT-2	90
Ø50	MT-3	96
Ø50	MT-4	120
Ø50	MT-5	150

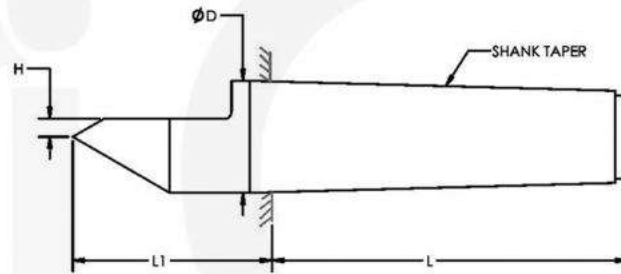
Dead Centre



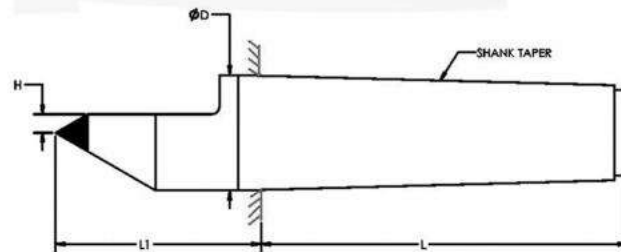
PLAIN DEAD CENTRE			
MT	L	L1	ØD
MT-1	53.5	26.5	12.2
MT-2	64	36	18
MT-3	84	44	24.1
MT-4	102.5	57.5	31.6
MT-5	129.5	70.5	44.7
MT-6	182	88	63.8



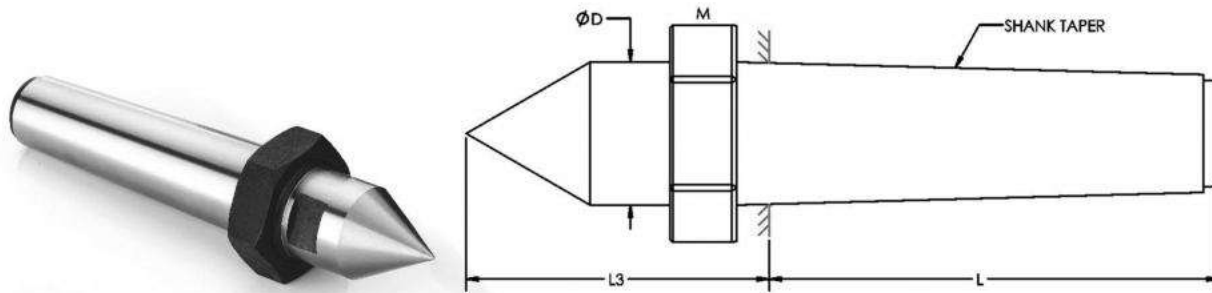
HALF DEAD CENTRE				
MT	L	L1	ØD	h
MT-1	53.5	26.5	12.2	2
MT-2	64	36	18	2.6
MT-3	84	44	24.1	3.45
MT-4	102.5	57.5	31.6	5.2
MT-5	129.5	70.5	44.7	11.65
MT-6	182	88	63.8	10.1



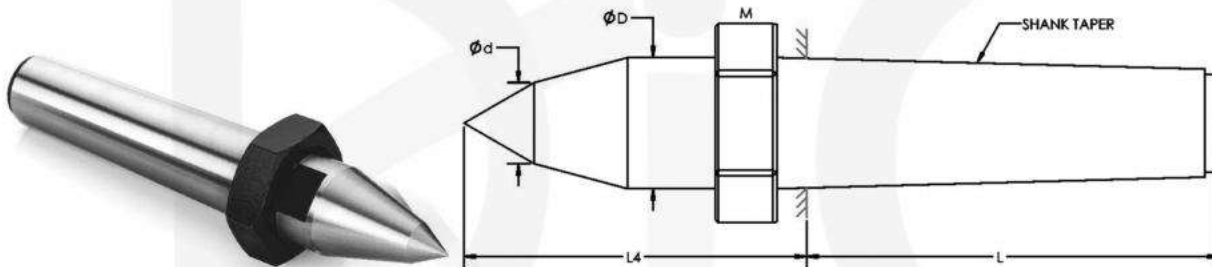
C.T. DEAD CENTRE HALF				
MT	L	L1	ØD	h1
MT-1	53.5	26.5	12.2	3.15
MT-2	64	36	18	5.6
MT-3	84	44	24.1	7
MT-4	102.5	57.5	31.6	8.7
MT-5	129.5	70.5	44.7	10.7
MT-6	182	88	63.8	11.1



Continue...

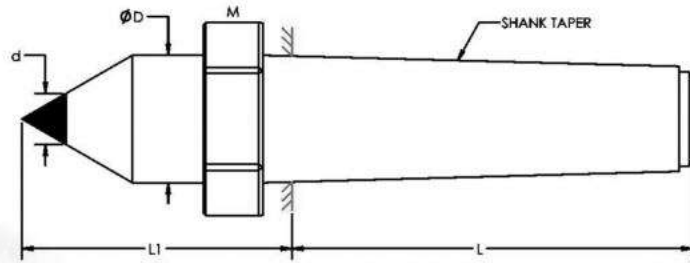


CNC DEAD CENTRE STUB				
MT	L	L3	$\varnothing D$	M
MT-2	64	48	18	22x1.5
MT-3	84	57	24.1	27x1.5
MT-4	102.5	72.5	31.6	36x1.5
MT-5	129.5	87.5	44.7	48x1.5
MT-6	182	108	63.8	68x1.5

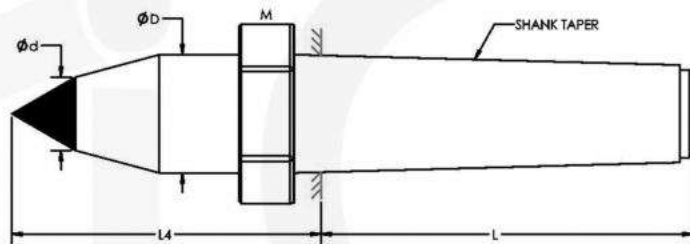


CNC DEAD CENTRE EXTENDED					
MT	L	L4	$\varnothing D$	$\varnothing d$	M
MT-2	64	61.5	18	10	22x1.5
MT-3	84	70	24.1	11	27x1.5
MT-4	102.5	83.5	31.6	14	36x1.5
MT-5	129.5	90	44.7	18	48x1.5
MT-6	182	124	63.8	24	68x1.5

Continue...



CNC DEAD CENTRE STUB					
MT	L	L1	ØD	d	M
MT-3	84	44	24.1	11	27x1.5
MT-4	102.5	57.5	31.6	14	36x1.5
MT-5	129.5	70.5	44.7	18	48x1.5
MT-6	182	88	63.8	18	68x1.5

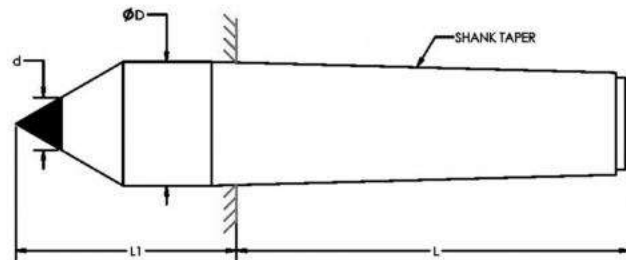


CNC DEAD CENTRE EXTENDED - CARBIDE TIPPED					
MT	L	L4	ØD1	d	M
MT-3	84	70	24.1	11	27x1.5
MT-4	102.5	83.5	31.6	14	36x1.5
MT-5	129.5	90	44.7	18	48x1.5
MT-6	182	124	63.8	18	68x1.5

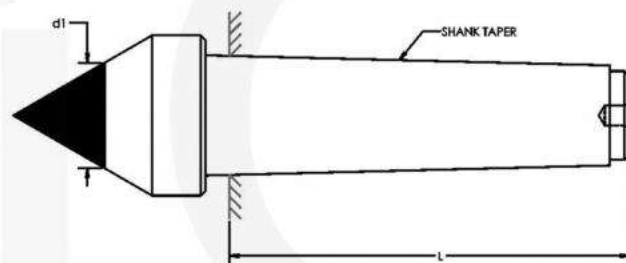
Continue...



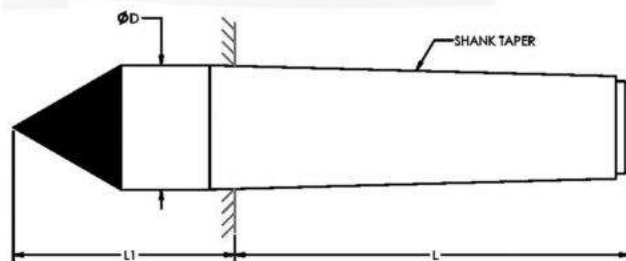
DEAD CENTRE FULL - CARBIDE TIPPED				
MT	L	L1	ØD	d
MT-1	53.5	26.5	12.2	5
MT-2	64	36	18	8
MT-3	84	44	24.1	11
MT-4	102.5	57.5	31.6	14
MT-5	129.5	70.5	44.7	18
MT-6	182	88	63.8	18



SPECIAL CARBIDE TIPPED DEAD CENTRE		
MT	L	d1
MT-2	64	14,18,22,25,28
MT-3	84	14,18,22,25,28,30,32,35,40
MT-4	102.5	18,22,25,28,30,32,35,40
MT-5	129.5	22,25,28,30,32,35,40

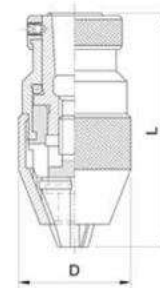


FULL CARBIDE TIPPED DEAD CENTRE			
MT	L	L1	ØD
MT-2	64	36	18
MT-3	84	44	24.1
MT-4	102.5	57.5	31.6
MT-5	129.5	70.5	44.7



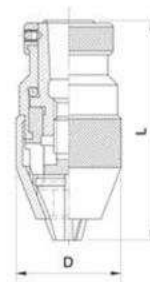
Keyless Drill Chucks

High Precision Heavy Duty Industrial Keyless Drill Chucks 10,000 RPM



Capacity Inch	Capacity Metric	Taper Size	T.I.R.	Weight Approx.	D	L
1/64" - 1/8"	0.2 mm - 3 mm	JT0	0.002"	0.22 lb	0.945"	1.634"
1/64" - 5/32"	0.2 mm - 4 mm	JT1	0.002"	0.42 lb	1.142"	2.394"
1/64" - 1/4"	0.2 mm - 6 mm	JT1	0.002"	0.69 lb	1.339"	2.780"
1/64" - 5/16"	0.2 mm - 8 mm	JT2	0.002"	1.05 lb	1.535"	3.165"
1/64" - 3/8"	0.2 mm - 10 mm	JT2	0.002"	1.51 lb	1.732"	3.551"
1/64" - 3/8"	0.2 mm - 10 mm	JT33	0.002"	1.45 lb	1.732"	3.551"
1/64" - 1/2"	0.2 mm - 13 mm	JT2	0.002"	2.29 lb	1.929"	3.961"
1/64" - 1/2"	0.2 mm - 13 mm	JT33	0.002"	2.08 lb	1.929"	3.961"
1/64" - 1/2"	0.2 mm - 13 mm	JT6	0.002"	2.1 lb	1.929"	3.961"
1/64" - 5/8"	0.2 mm - 16 mm	JT6	0.002"	2.79 lb	2.126"	4.417"
1/64" - 3/4"	0.2 mm - 20 mm	JT3	0.002"	3.78 lb	2.323"	5.177"

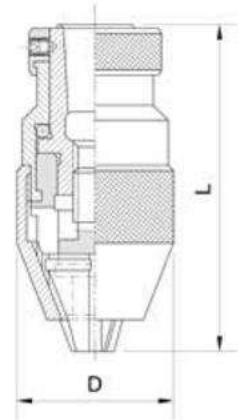
High Precision Heavy Duty Industrial Keyless Drill Chucks 4,000 RPM



Capacity Inch	Capacity Metric	Taper Size	T.I.R.	Weight Approx.	D	L
1/64" - 1/4"	0.2 mm - 6 mm	JT1	0.002"	0.69 lb	1.339"	2.780"
1/64" - 3/8"	0.2 mm - 10 mm	JT33	0.002"	1.36 lb	1.732"	3.551"
1/64" - 3/8"	0.2 mm - 10 mm	JT2	0.002"	1.51 lb	1.732"	3.551"
1/64" - 1/2"	0.2 mm - 13 mm	JT2	0.002"	2.21 lb	1.929"	3.961"
1/64" - 1/2"	0.2 mm - 13 mm	JT33	0.002"	2.08 lb	1.929"	3.961"
1/64" - 1/2"	0.2 mm - 13 mm	JT6	0.002"	2.16 lb	1.929"	3.961"
1/64" - 5/8"	0.2 mm - 16 mm	JT6v	0.002"	2.79 lb	2.126"	4.417"
1/64" - 3/4"	0.2 mm - 20 mm	JT3	0.002"	3.78 lb	2.323"	5.177"

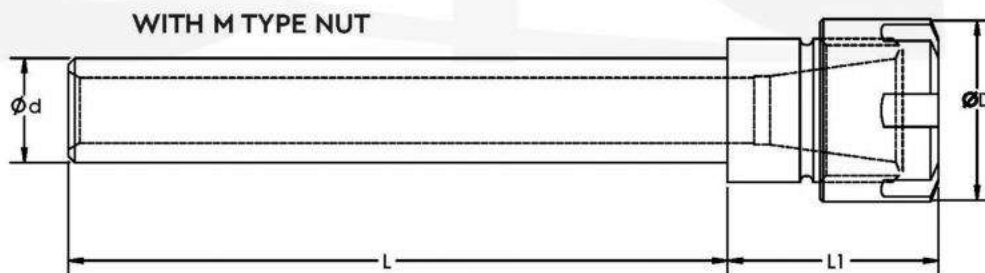
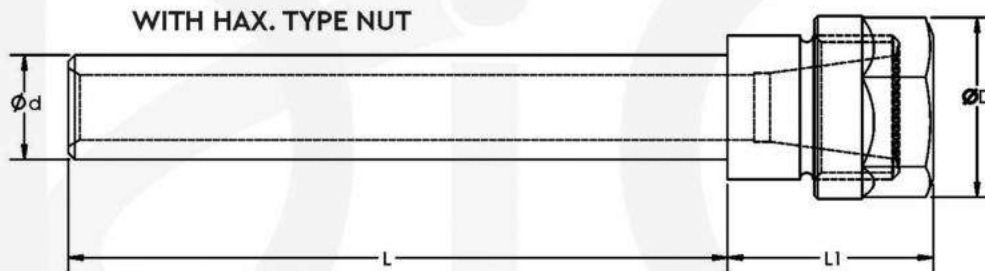
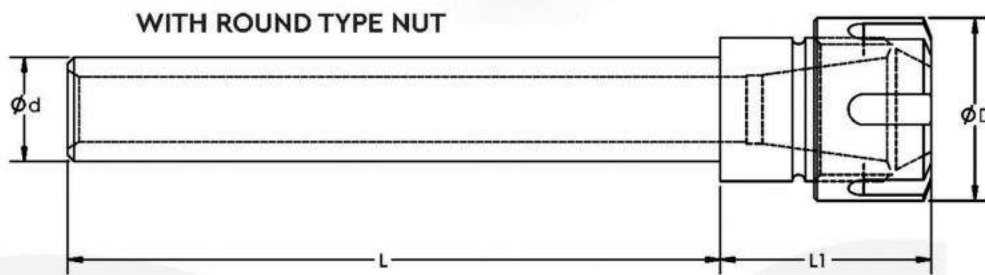
Continue...

Standard Accuracy Heavy Duty Industrial Keyless Drill Chucks 4,000 RPM



Capacity	Capacity Metric	Taper Size	T.I.R.	Weight Approx.	D	L
1/64" - 1/4"	0.2 mm - 6 mm	JT1	0.003"	0.69 lb	1.339"	2.780"
1/64" - 3/8"	0.2 mm - 10 mm	JT2	0.004"	1.51 lb	1.732"	3.551"
1/64" - 1/2"	0.2 mm - 13 mm	JT2	0.004"	2.21 lb	1.929"	3.961"
1/64" - 1/2"	0.2 mm - 13 mm	JT33	0.004"	2.08 lb	1.929"	3.961"
1/64" - 1/2"	0.2 mm - 13 mm	JT6	0.004"	2.16 lb	1.929"	3.961"
1/64" - 5/8"	0.2 mm - 16 mm	JT6	0.004"	2.79 lb	2.126"	4.417"
1/64" - 3/4"	0.2 mm - 20 mm	JT3	0.004"	3.78 lb	2.323"	5.177"

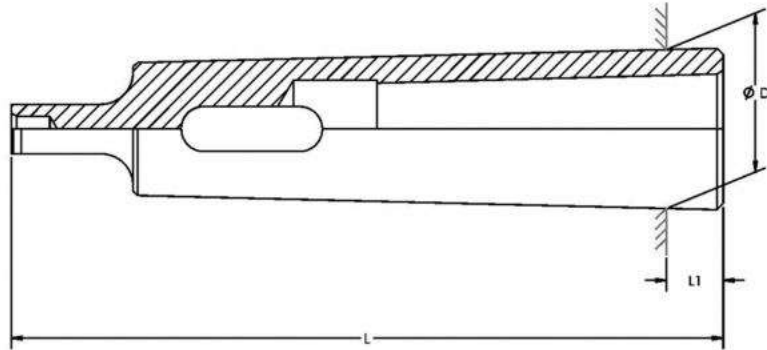
Cylindrical Shank Collet Chuck



Continue...

Ød	ØD	L	L1	SUITABLE COLLET	NUT
10	12	100	20	ER8	MINI
12	16	100	25	ER11	MINI
12	19	100	25	ER11	HEX
16	16	100	25	ER11	MINI
16	16	150	25	ER11	MINI
16	19	100	25	ER11	HEX
16	19	150	25	ER11	HEX
16	22	100	35	ER16	MINI
16	22	150	35	ER16	MINI
16	28	100	35	ER16	HEX
16	28	150	35	ER16	HEX
20	16	100	25	ER11	MINI
20	22	100	35	ER16	MINI
20	22	150	35	ER16	MINI
20	28	100	35	ER16	HEX
20	28	150	35	ER16	HEX
20	28	100	38	ER20	MINI
20	28	150	38	ER20	MINI
20	34	100	38	ER20	HEX
20	34	150	38	ER20	HEX
20	42	100	41	ER25	SPANNER
25	28	100	35	ER16	HEX
25	28	150	35	ER16	HEX
25	34	100	38	ER20	HEX
25	34	150	38	ER20	HEX
25	42	100	41	ER25	SPANNER
25	42	150	41	ER25	SPANNER
25	50	100	53	ER32	SPANNER
32	42	150	41	ER25	SPANNER
32	50	100	53	ER32	SPANNER
32	50	150	53	ER32	SPANNER
32	63	100	58	ER40	SPANNER
40	42	100	41	ER25	SPANNER
40	50	100	53	ER32	SPANNER
40	64	100	58	ER40	SPANNER

Drill Sleeve



MODEL NO	INNER M.T.	OUTER M.T.	L	L1	D	WEIGHT KG.
MT 0-1	0	1	80	14	12.065	0.040
MT 1-2	1	2	91	17	17.780	0.100
MT 1-3	1	3	98	5	23.825	0.215
MT 1-4	1	4	123	6.5	31.267	0.515
MT 1-5	1	5	155	6.5	44.399	0.460
MT 1-6	1	6	217	8	63.348	4.600
MT 2-3	2	3	111	18	23.825	0.185
MT 2-4	2	4	123	6.5	31.267	0.445
MT 2-5	2	5	155	6.5	44.399	1.410
MT 2-6	2	6	217	8	63.348	4.700
MT 3-4	3	4	137	22.5	31.267	0.380
MT 3-5	3	5	155	6.5	44.399	1.230
MT 3-6	3	6	217	8	63.348	4.400
MT 4-5	4	5	170	21.5	44.399	1.100
MT 4-6	4	6	217	8	63.348	4.000
MT 5-6	5	6	217	8	63.348	3.100
MT 5-7	5	7	292	9.5	83.05	
MT 6-7	6	7	292	9.5	83.05	

BORING HEAD SET

BORING HEAD SET

Shank MITR/RB (12x1.5)

Shank MT-2(10x1.5)

Shank MT-3(12x1.75)

Shank MT-4(16x2.0)

Shank ISO-40(16x2.0)

Shank BT-40(16x2.0)

Shank ISO-30(12x1.75)

Shank BT-50(24x3.0)

Shank CAT-40(5/8x11 UNC)



SET INCLUDE

BORING HEAD WITH MITR/R5 SHANK/ISO-40 SHANK ETC.

3 NO's TOOLS

ELLEN KEYS

BORING HEAD SET

BORING HEAD DIA (MM)	OVERALL LENGTH (MM)	BORING BAR HOLE (MM)	CENTER DISTANCE BETWEEN HOLE MM	CROSS HOLE SIZE MM	SIDE RADIAL TRAVEL MM	MOUNTING THREAD	NET WEIGHT KG	BORING CAPACITY
62	57	12	16	12	19	16x1.5	2.600	12mm to 125mm
80	77	16	20	16	35	16x1.5	4.700	16mm to 175mm

BORING HEAD EXTENSION

OUTER DIA MM	OVERALL LENGTH MM	THREAD
50	60	16x1.5

DIC – INDIA
DEDICATED IMPEX CO.

D – 189, Industrial Focal Point, Patiala
147003 Punjab, India
info@dictoolsindia.com
+91-95922-28222

DIC – UAE
DEDICATED IMPEX FZE

B.C. 1303260, Ajman Free Zone,
P.O. BOX: 47359, Ajman, UAE
info@dictoolsindia.com
(+971) 556721577

DiCTOOLS

A Brand by Dedicated Impex Co.